

# **ST. MARY'S UNIVERSITY**

**RESEARCH AND KNOWLEDGE MANAGEMENT OFFICE (RAKMO)**

KNOWLEDGE MANAGEMENT UNIT

## **BULLETIN OF STUDENT STATISTICS (BOSS 2012)**

**September 2013**

## Introduction

Bulletin of Student Statistics (BOSS) is an annual series of publication containing student related statistic of SMU. The bulletin provides up-to-date, relevant and reliable student statistics of St. Mary's University. BOSS 2012 is the sixth annual publication. The print ready preparation of the last five publications has been undergoing in the Knowledge Management Unit (the late 'Data Processing and Information Unit') of Research and Knowledge Management Office (RAKMO) while the first issue of the series was developed by the Registrar Offices of the regular and distance divisions.

This publication incorporates data gathered from Registrar Offices of the Conventional Learning Division, the College of Open and Distance Learning (CODL) and School of Graduate Studies (SGS). The conventional mode of learning has four faculties: Faculty of Business, Faculty of Law, Faculty of Informatics and Faculty of Teacher Education. The Faculty of Business provides undergraduate programs in Accounting, Marketing Management and Management as well as TVET programs in Accounting, Marketing Management and Administrative Office and Secretarial Technology. The Faculty of Teacher Education offers 10+3 programs in Languages. And the Law Faculty runs undergraduate program (LLB) and TVET diploma program. The Faculty of Informatics has opened a new department of 'Information Systems' in undergraduate level in the year 2012 in addition to the already existing department of Computer Science.

The distance mode of learning offers degree and TVET program in 37 departments. The distance division has 166 centers and clusters that coordinate open and distance learning throughout the country.

The arrangement of this publication is divided into two major *parts*: Analytical Overview and Tables and Figures. The first part, Analytical Overview, offers a summarized description of the latter, Tables and Figures.

The data incorporated in the publication are by no means considered to be exhaustive. Further refinement and improvements would be made in the future series of this publication. To this effect, both of the Registrar Offices and Knowledge Management Unit of SMU are implementing enhanced information systems and data bases to avail accurate, reliable and timely data. The Knowledge Management Unit will be pleased to receive any comments that might contribute to the improvement of both the shape and the content of this publication.

Knowledge Management Unit

Research and Knowledge Management Office (RAKMO)

St. Mary's University

rakmo@smuc.edu.et

## Table of Contents

<b>Part One: Analytic Overview</b> .....	1
1.1. Students Admission .....	2
1.2. Student Enrollment by Faculties .....	4
1.3. Enrollment by Level of Study .....	5
1.4. Enrollment Rank by Department (from Highest to Lowest) .....	8
1.5. Graduation .....	13
1.6. Number of Currently Active Students.....	16
1.7. Post Graduate Programs .....	17
1.9. SMU Free Scholarships .....	18
<b>PART TWO: Tables &amp; Figures</b>	
<b>2.1. Conventional Mode of Learning</b>	
2.1.1. Enrollment .....	19
2.1.1.1. Enrollment of Students in the Conventional Mode of Learning (1991-2005EC).....	19
2.1.1.2. Enrollment by Department for the Last Twelve Entries (1991-2005 EC) .....	25
2.1.1.3. Enrollment Rate by Year .....	25
2.1.1.4. Enrollment of Students by Faculty (1996 - 2005 EC) .....	26
2.1.1.4.1. Faculty of Business – Degree students' Enrollment .....	26
2.1.1.4.2. Faculty of Business – TVET students' Enrollment.....	27
2.1.1.4.3. Faculty of Law – All Degree Students Enrollment .....	29
2.1.1.4.4. Faculty of Law – TVET Students Enrollment .....	29
2.1.1.4.5. Faculty of Informatics – Degree Students Enrollment .....	29
2.1.1.4.6. Faculty of Informatics – TVET Students Enrollment.....	30
2.1.1.4.7. Faculty of Teacher Education – Enrollment.....	30
2.1.2. Graduation .....	32
2.1.2.1. Total Number of Graduates by Department, Program, Sex & Year of Entry (1996EC – 2005EC) .....	32
2.1.2.2. Total Graduates 1996 – 2002EC .....	35
2.1.2.3. Total Diploma (12+2) Program Graduates (1993-1995EC).....	35
2.1.2.4. Number of Certificate (12+1) Graduates by Department, Program, Sex & Year of Entry (1993 - 1995EC) .....	36
2.1.2.5. Certificate (10+2/10+1) Graduates by Year, Program, Department and Division (1996-2005EC) .....	37
2.1.2.6. All Graduates by Program, Year and Sex (1993-2005EC).....	39
2.1.3. Attrition Rate .....	39
2.1.3.1. Total Number of Withdrawals and Drop outs (1997 - 2005EC) .....	39
2.1.3.1.1. Diploma Program (Attrition) .....	39
2.1.3.1.2. Degree Program (Attrition).....	40
2.1.3.2. Number of Readmitted Degree Students.....	41
2.1.3.3. Admitted to Graduated Rate by Year of Entry - Diploma Program.....	43
2.1.3.4. Admitted to Graduated Rate by Year of Entry – Degree Program .....	43
2.1.4. Currently Active Students .....	44
2.1.4.1. Current Number of All Degree, TVET and Teacher Education Students by Year of Entry, Department, Program & Sex .....	44
2.1.4.2. Total Number of Current Students .....	46
2.1.4.3. Current Number of Students by Training Program and Year of Entry .....	46
2.1.5. Free Scholarship Students: Regular and Extension .....	46

## 2.2. Distance Mode of Learning

2.2.1. Total Enrollment 1992 – 2005EC .....	49
2.2.2 Active Number of Students .....	50
2.2.3. Active Students by Department .....	51
2.2.4. Active Number of Degree Program Students by Department.....	52
2.2.5. Active Number of Level IV and 10+3 Students by Department .....	53
2.2.6. Active Number of Level III Students by Department .....	53
2.2.8. Active Students by Centers and Program.....	54
2.2.9. Graduation .....	67
2.2.9.1. Number of Graduates by Department and sex (1999-2005) .....	69
2.2.9.2. Total Graduates of Distance Mode of Learning (1995-2005EC) .....	70
2.2.10. Free Scholarship Given Students .....	72
2.2.10.1. Scholarship Winning Students from outside SMU .....	72
2.2.10.2. Scholarship Given to SMU workers .....	72
2.2.10.3. Total Number of Scholarships Given .....	72

## 2.3. School of Graduate Studies

2.3.1. Regular Program .....	73
2.3.2. IGNOU .....	73
2.3.2.1. Total Number of IGNOU Students by Entry & Program .....	73
2.3.2.2. IGNOU Graduation .....	75

## 2.4. Total (Summed Up Conventional & Distance Modes) Students' Statistic

2.4.1. Enrollment .....	76
2.4.1.1 Total Enrollment .....	76
2.4.1.2. Total Enrollment by Year and Program Level.....	76
2.4.1.3. Total Enrollments by Year and Mode of Learning .....	78
2.4.2. Total Graduation .....	78
2.4.3. Total Number of Current Students .....	78
2.4.4. Total Number of Scholarship Students .....	79

## List of Figures & Illustrations

Figure 1: Student Admission Trend since 1991 EC.....	2
Figure 2: Student Admission Trend by Mode of Learning .....	3
Figure 3: Total Students Share by Sex, 2005EC.....	3
Figure 4: Enrollment Share by Sex of Total Students, Distance Students and Conventional Students.....	4
Figure 5: Share of Total Students Enrolled by Faculty (Conventional Mode) .....	5
Figure 6: Enrollment Trend of Students by Level of Study .....	5
Figure 7: Enrollment Trend of Students by Level of Study (in Conventional Mode of Learning) .....	6
Figure 8: Degree Program Enrollment Trend by Faculty .....	6
Figure 9: TVET Student Enrollment Trend by Faculty .....	7
Figure 10: Total Students Enrollment by Faculty and Sex .....	7
Figure 11: Share of Departments in Student Enrollment in the Conventional Mode of Learning.....	8
Figure 12: Total Enrollment Share by Program Level of CODL .....	10
Figure 13: Current Students of CODL by Program Level .....	10
Figure 14: Current Degree Program Students of CODL by Department.....	10
Figure 15: Overall Enrollment of Distance Students by Department.....	11
Figure 16: Overall Enrollment of Distance Students by Department.....	12
Figure 17: Share of All Graduates by Mode of Learning .....	13

Figure 18: Share of All Graduates by Program Level (left) and by Sex (Right).....	14
Figure 19: Total Trend of Graduates (1999 – 2005EC).....	14
Figure 20: Comparison of Distance and Conventional Graduates (1996-2005EC) .....	15
Figure 21: Degree Program Students Admitted to Graduated Trend by Year of Graduation (Conventional Mode of Learning) .....	15
Figure 22: Diploma Program Students Admitted to Graduated Trend by Year of Graduation (Conventional Mode of Learning) .....	16
Figure 23: Current Students by Mode of Learning & Year of Enrollment .....	16
Figure 24: Current Students by Mode of Learning & Program Level of Study .....	17
Figure 25: Enrollment Trend of SMU-IGNOU Graduate Program Enrollment.....	17
Figure 26: IGNOU Total Enrollment Share by Program .....	18
Figure 27: Trend of Free Scholarships Given.....	18

## PART ONE: Analytic Overview

It was fortunate that the distance learning, which was banned by the Ministry of Education in the year 2003EC, was permitted to be given by selected institutions including St. Mary's University (SMU) in 2004EC. BOSS 2012 comes up with newly enrolled distance students for the terms of the academic year 2005EC. However the ban that was

imposed on Law and Teacher Education programs is not yet lifted, the School of Graduate Studies has enrolled higher number of post graduate students this year as compared to previous years.

### BOSS 2011 Quick Figures

All students ever admitted: -----	137,761
All Students ever graduated:-----	52,617
Active Students in 2005EC-----	42,221 ↑
New Students Enrolled in 2005EC ----	4,640 ↓
Active Degree Program Students-----	7,382 ↓
Active TVET Students -----	907 ↓
Total Graduate Program Students-----	526↑
Total IGNOU (at SMU) Enrollment -----	5,030
Total IGNOU (at SMU) Graduates-----	953
Total Free Scholarships Given -----	534

In 2005EC, SMU enrolled 4,640 students of which 2,709 applied for distance learning. (This number doesn't include students who were registered in the 2<sup>nd</sup> and 3<sup>rd</sup> terms of distance learning. The two terms enrollment will only be included in the next version of this Bulletin, BOSS 2013.)

The Educational Statistic Annual Abstract 2010/11 of MoE shows that accredited non-government higher education institutions contributed 17% (79,314) of the country's entire enrollment of undergraduate and postgraduate students. Out of this SMU alone enrolled 19,450 students which take the lion's share (24.5%) of the total non-government higher education institutions' enrollment of the year.

According to the Abstract, during the same year, SMU has graduated 1,623 undergraduate students which is the second highest amongst 33 non-government higher institutions. Similarly, the University College has had the highest number of permanent academic staff, (which is 160) as compared to other private institutions.

The total number of students SMU ever enrolled in its life time has reached 137,761 of which 52,617 students are graduated and 42,221 are currently active students. In 2005 EC, around ten thousands more the number of new students enrolled in the year of 2004EC; this difference is registered because the ban of distance learning has been lifted for undergraduate programs. The distance learning mode enrolled 78% (106,794) of the SMU's total enrollment since its establishment.

During the year 2005EC, the conventional mode of learning for undergraduate programs, the Accounting department has enrolled highest number of students as compared to other departments; but, it has enrolled slightly less number of students as compared to its own enrollment in that of the previous year.

St. Mary's University launched three postgraduate programs during the year 2004EC in the field of Master's of Agricultural Economics, Rural Development and Agri-business. However, only 21 students were enrolled for the department of Agricultural Economics during the year. The enrollment becomes more than double (49) in the year 2005EC in the department. The total number of new enrollments this year is 526 for the conventional postgraduate programs and 459 students for IGNOU programs in partnership with SMU.

### 1.1. Students Admission

The Figure below displays students' admission from 1991 to 2005 E.C. In 2003EC a sudden fall of students' enrollment was observed due to the preconditioned registration of distance learning. However, this year, the number rose back to 4,640 because the ban on distance learning has been lifted again for undergraduate programs. The conventional mode of learning for undergraduate students has also enrolled more students in 2004EC than it did for the previous year.

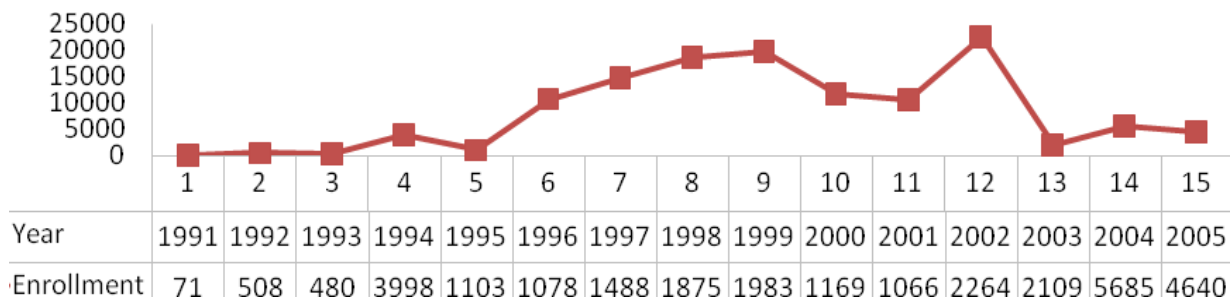


Fig. 1: Student Admission Trend of St. Mary's University Since 1991 EC (this doesn't include postgraduate students' statistic)

As shown in Fig. 2 below, the distance mode of learning as usual, other than the year 2003 since 1994EC, has topped in number of students over the conventional mode of learning. This year, the distance mode enrolled 1,904 students where as the conventional mode enrolled 2,190 in undergraduate and TVET programs. The conventional mode of learning division has shown a slight increment in number of students enrolled this year as compared to its own enrollment the previous year.

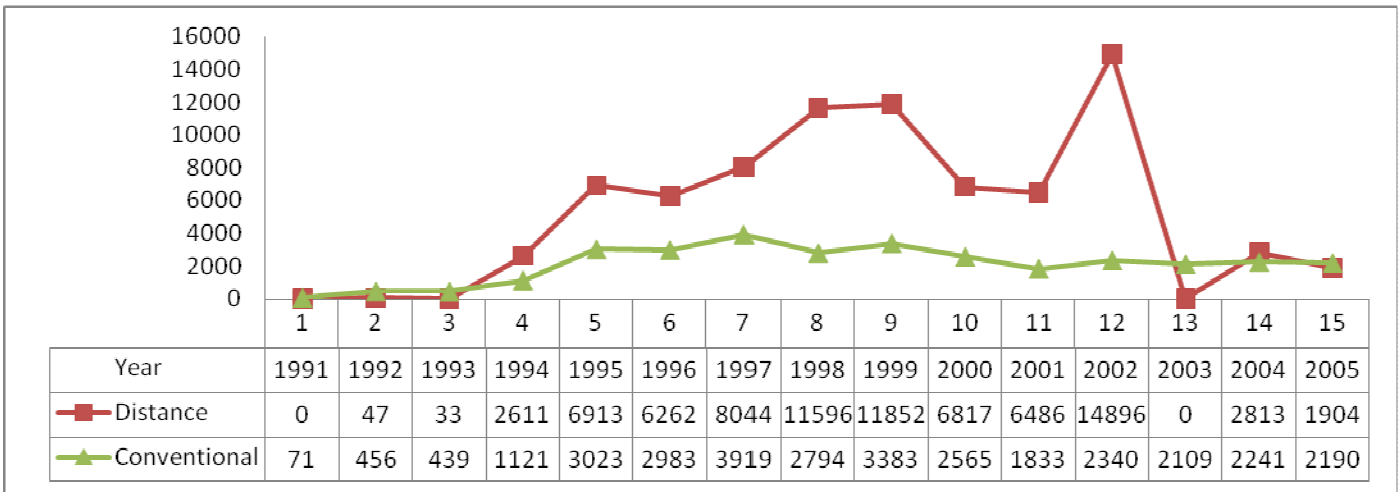


Fig. 2: Student enrollment trend of SMU by Mode of Learning (this doesn't include post graduate students statistic)

The pie charts below and in the left exhibit student enrollment by year and sex. Figure 3 shows the share of Male and Female students in the overall enrollment history of the University College. Accordingly, 68% of the students ever enrolled in SMU are Male whereas Female students account only 32%. The number of male students is more than double because of the fact that most of the distance students are female; and, the distance mode of learning accounts more than 78% of SMU's students' enrollment.

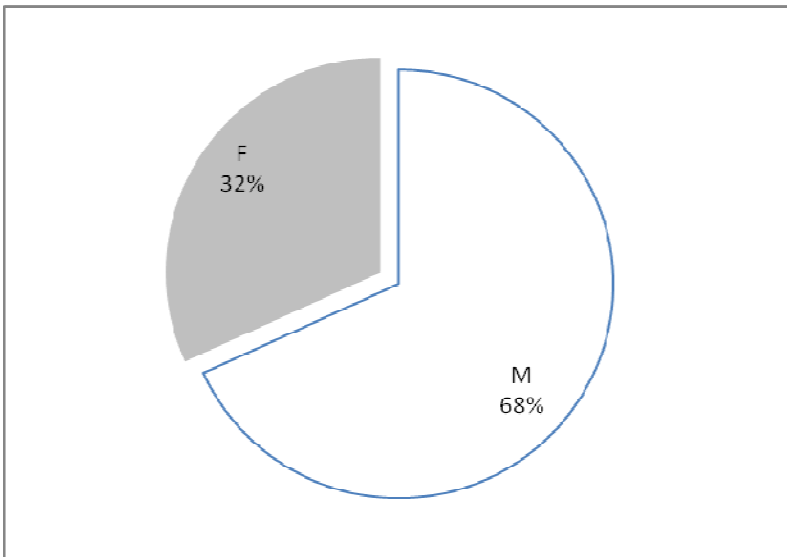


Fig 3: Total Students Share by Sex, 2005 E.C.



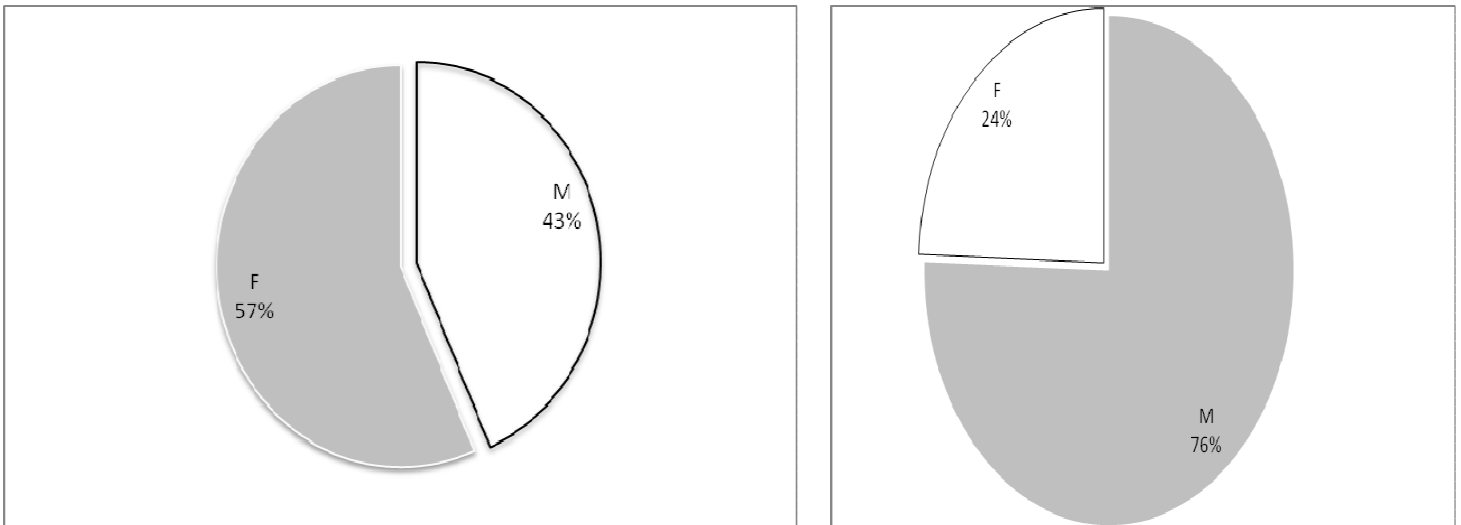


Fig. 4: Enrollment Share by Sex of Conventional Students (left) and Distance Students (right)

The above pie charts (in Fig. 4) show us the difference in the choice of mode of learning between males and females. In the conventional mode of learning, more than half of the students (57%) are females from the total of 31,467 students. On the other hand, out of the total of 137,761 students ever enrolled in the College of Open and Distance Learning, three fourth of the students (76%) are males. Female students seem to prefer to attend their higher learning face to face which is a praiseworthy choice.

## 1.2. Student Enrollment by Faculties

The following Bar graph (Fig. 5) indicates the enrolment of students by faculties. As usual, the Faculty of Business takes the lion's share of enrollment in SMU. It has enrolled a total of 18,316 students since its establishment in both TVET and undergraduate programs. This number is close to 81% to the sum of enrollment in all of the faculties. In fact, the Faculty is the only in having four departments all having currently active students. On the other hand, the Faculty of Teachers Education enrolled the least number of students as compared to other faculties. The ban of government institutions to recruit graduates of teacher education (and later in 2003EC total ban of provision of teacher education in) private higher institutions is a contributor to the low number of students in the Faculty. The Faculty however has five departments, which are currently freezing as a result of the effect of this ban. Faculty of Law and Informatics enrolled the 2<sup>nd</sup> and 3<sup>rd</sup> highest number of students, respectively. The Faculty of Law, similar to the Faculty of Teachers Education, is also banned from being offered in private higher institutions since 2003EC. Currently, it is graduating its students enrolled before the ban.

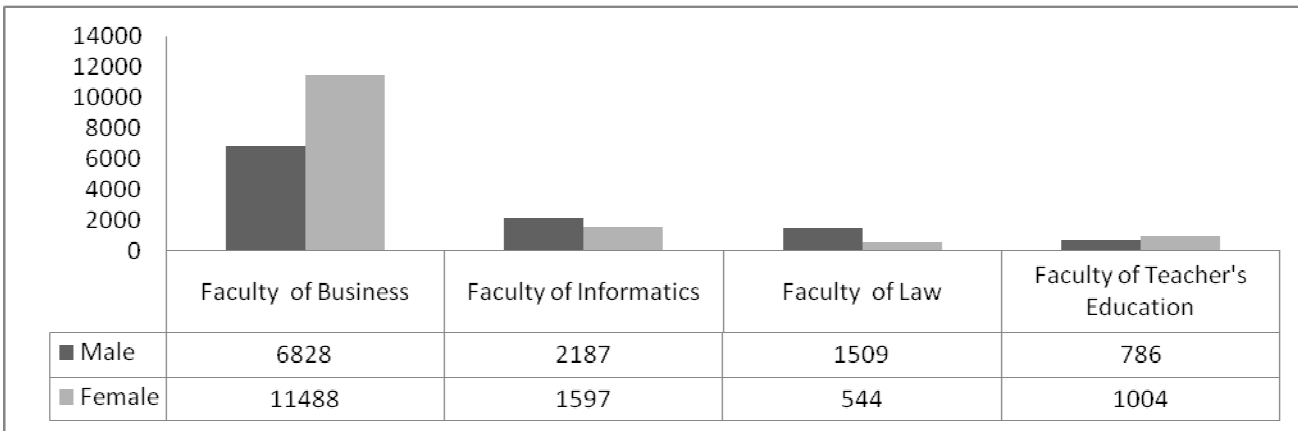


Fig. 5: Share of Total Students Enrolled by Faculty (Conventional Mode)

The share of female students is higher in the Faculty of Business and Faculty of Teachers Education. Since Secretarial Science and Office Management (SSOM) department enrolls close to all female students, it has resulted in higher proportion of female students in the Faculty as compared to other faculties. This, coupled with the fact that the Business Faculty enrolled highest number of students, helped the conventional mode of learning enroll more female than male students.

### 1.3. Enrollment by Level of Study

The next line graph (Fig. 7) shows the enrollment of students by level of study. Of the total 137,761 students ever enrolled in the University College, nearly 56% (76,977) are enrolled for diploma programs. Diploma program was favored by most of our students before 2001EC when after the number of degree program students exceeded those of the others.

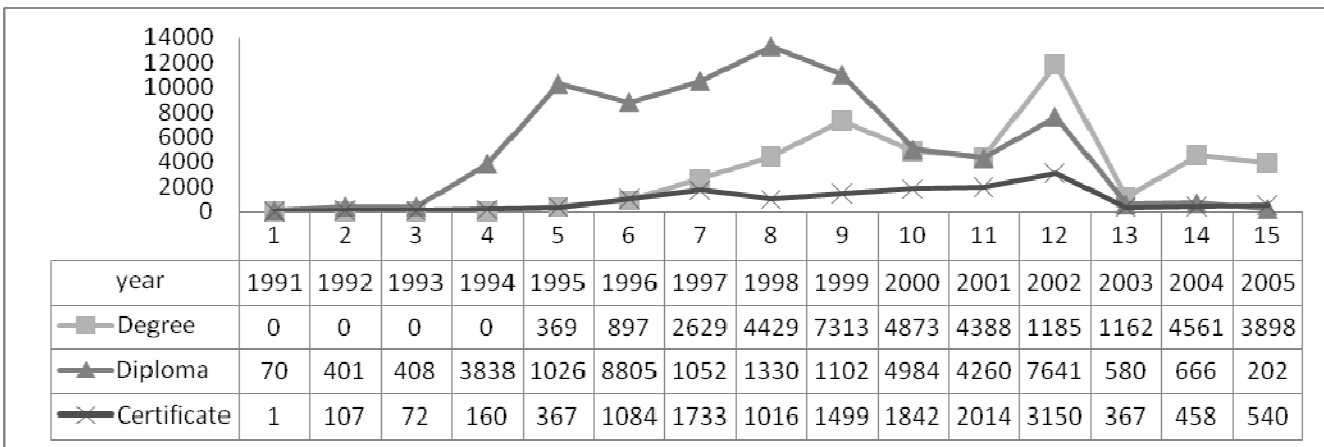


Fig. 6: Total Enrollment of Students by Level of Study

As illustrated in the figure below (Fig. 7), the share of students' enrollment [in the conventional mode of learning division] by program as well as their trend throughout the years since the establishment of the University. All in all, diploma programs have major share. They account more than 48% (15,095) of the total enrollment (31,467) in the conventional mode of learning. Degree programs, however launched 5 years later than the diploma programs, have managed to enroll highest number of students (1,485) in 2005EC. As compared to the previous year enrollment, more number of students are enrolled for degree and certificate programs this year whereas the number of students registered for diploma programs the same year has decreased significantly as shown in Fig.7.

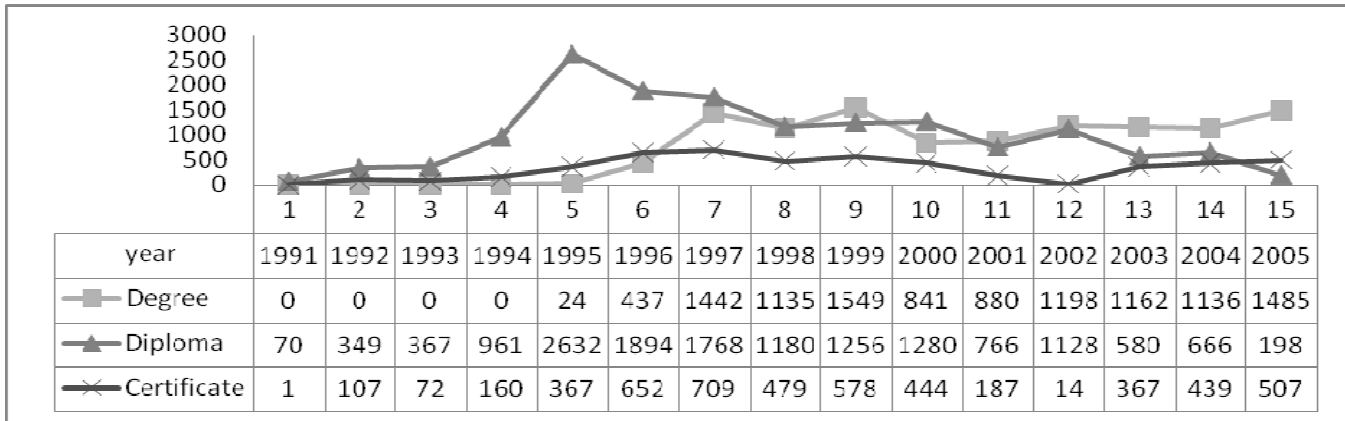


Fig. 7: Enrollment Trend of Students by Level of Study (Conventional Mode of Learning)

The graph below lines the trend of degree program students' enrollment by faculties of conventional mode of learning division. The faculty of Business shows fluctuations in enrolling students however it enrolled high number of students relative to other faculties all of the times. Moreover, it displayed a steady increase in 2003EC and maintained it (with only slight decrease) during the year. Unlike Law department which comes to an end in the year 2002, the Faculty of Informatics has shown a slight increase in admitting students (Fig. 8).

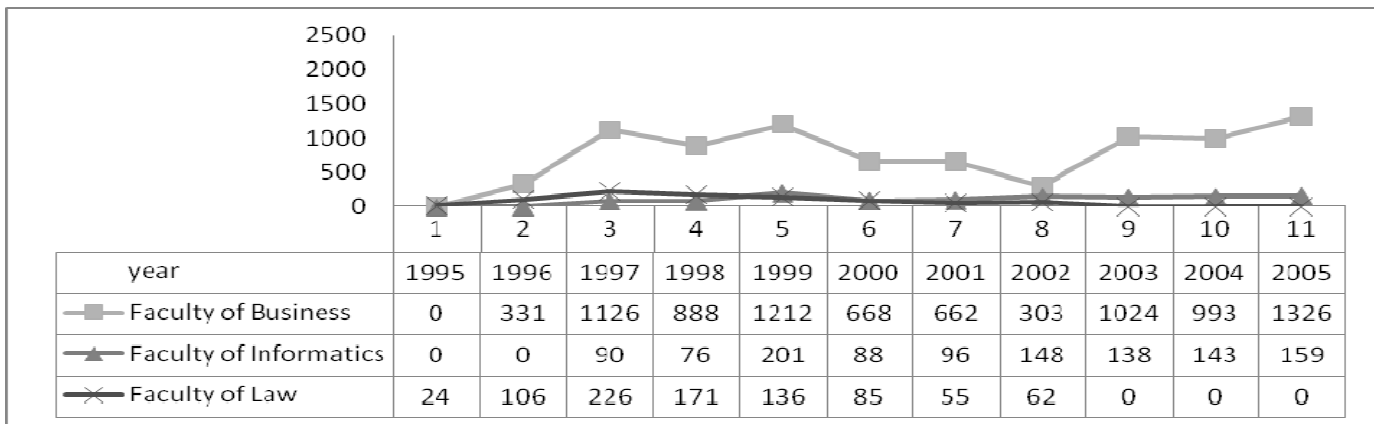
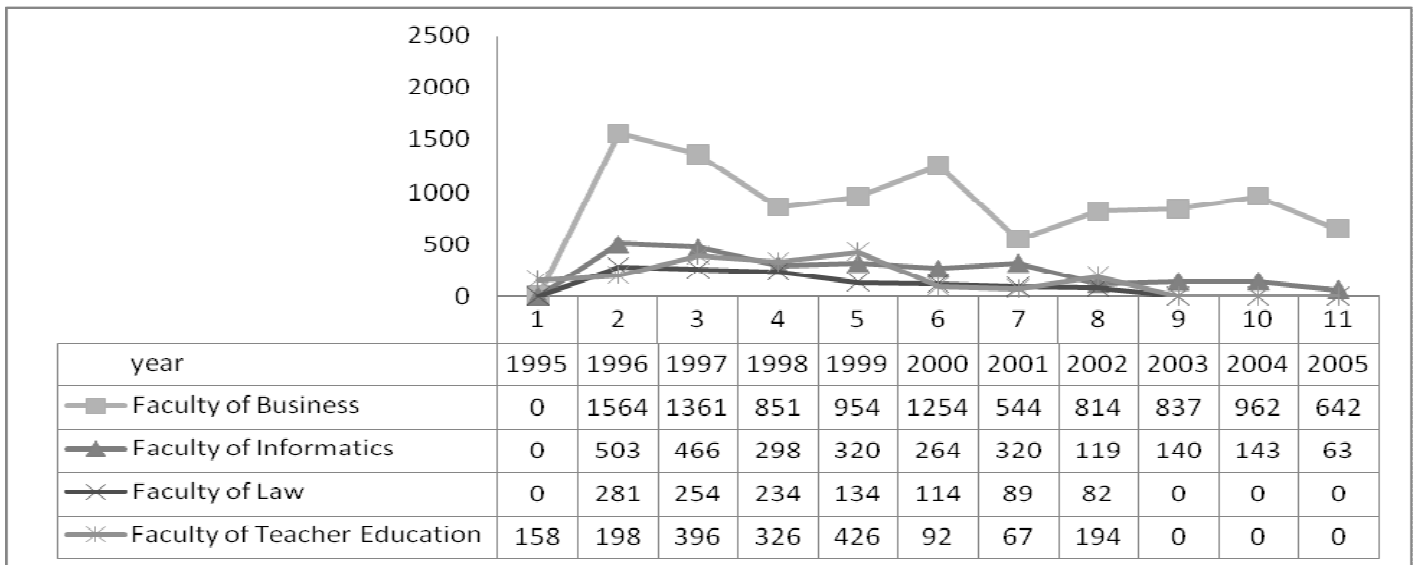


Fig. 8: Degree Program Enrollment Trend by Faculty

TVET/Diploma program enrollment in the Faculty of Business, similar to degree program, is the higher in comparison to other faculties (Fig .9). Enrollments of students for the Faculty of Law and Teachers Education has

stopped since 2002EC, however, both Business and Informatics enrolled relatively lesser number of students as compared to the previous year.



Graph 9: TVET Student Enrollment Trend by Faculty

The following bar graph indicates enrollment of students by stream: extension versus regular. As shown in Fig. 10, extension students have more share than regular students in all of the faculties other than Faculty of Informatics. Generally, the number of extension students (16,420), which accounts 62% of the total, exceeds the number of regular students which accounts 38% (10,189). Faculty of Informatics, in contrary to others, enrolled slightly higher number of students in the regular stream than that of extension.

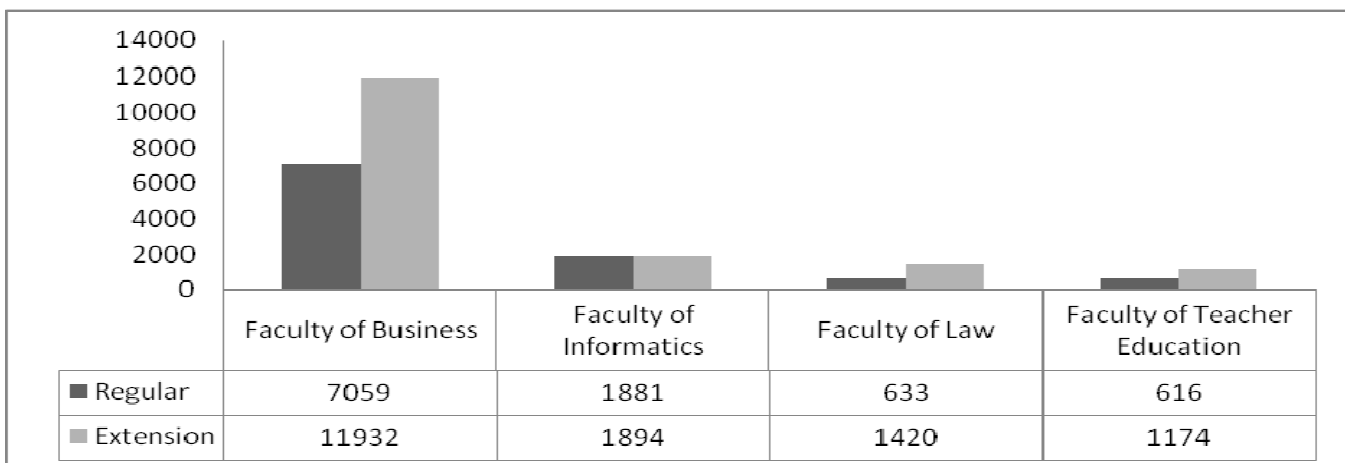


Fig. 10: Total Student Enrollment by Division of Learning and by Faculty

Information Systems (in the Faculty of Informatics) is a new department that joined the previous 12 departments in the University. Out of the 31,505 students that have enrolled in SMU since its establishment in 1991EC, 12,772 joined the Accounting department, which shares more than 40% of the entire enrollment.

In the conventional mode of learning, a total of 31,505 students have been enrolled in 12 departments. Accounting department enrolled the highest number of students (12,772) where as KG Teaching which enrolled only 24 students contributes the least to the total enrollment figure (Fig. 11).

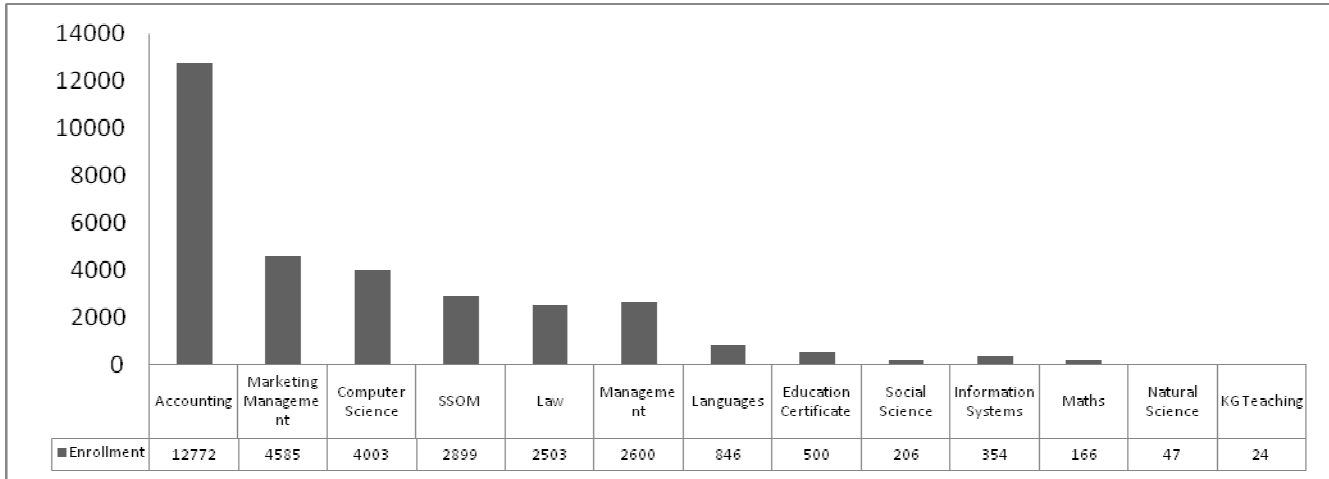


Fig. 11: Share of Departments in Student Enrollment in the Conventional Mode of Learning

#### 1.4. Enrollment Rank by Department (from Highest to Lowest)

The following Table displays enrollment of conventional mode of learning division by department. As shown in Figure 11 above, accounting department ranks first followed by Marketing and Computer Science in admitting high number of students in the conventional mode of learning at St. Mary's University. Accounting department enrolls more than twice of Marketing department students. The other 10 departments, excluding Accounting, Marketing and Computer Science, together constitute the remaining 33% of students.

Rank	Department	Enrollment	Percentage
1	Accounting	12772	40.54
2	Marketing	4585	14.56
3	Computer Science	4003	12.7
4	SSOM	2899	9.2
5	Law	2503	7.94
6	Management	2600	8.25
7	Languages	846	2.69
8	Education Certificate	500	1.59
9	Information Systems	354	1.12
10	Social Science	206	0.65
11	Mathematics	166	0.53
12	Natural Science	47	0.15
13	KG Teaching	24	0.08

The distance mode of learning enrolled a total of 106,294 students since its start in 1992EC. Among these 29,535 of them are currently active while 45,087 of students have already accomplished their study by graduating. Of the total enrollment in the history of distance learning, degree accounts for 62%, diploma (10+3 and level IV) accounts 25% , certificates and teaching accounts for 8 % and 5% respectively of the enrollment share in CODL (Fig 12).

On the other hand, the number of currently active students' in the distance mode of learning division is 6,011; and, the proportional share of programs shows a different picture than that of the overall. Degree program students, among the currently active students, supply 97% (5,833) of the total currently existing students. This is a result of growing demand to degree program studies in addition to the continued ban of diploma program from being given in distance mode. (Fig 13).

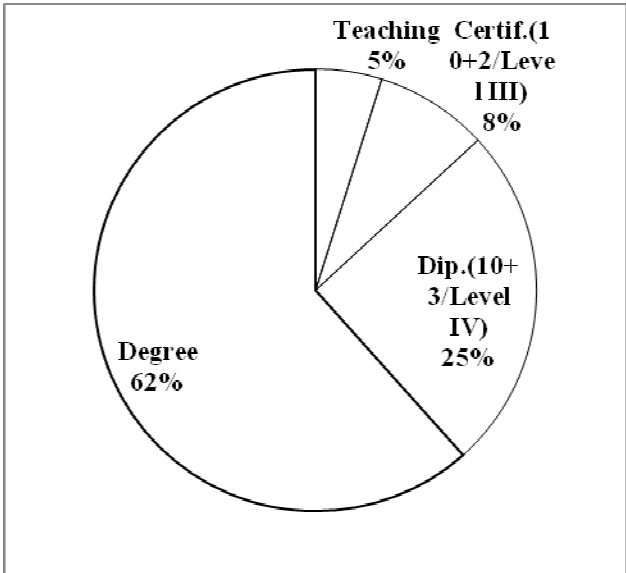


Fig. 12: Total Enrollment Share by Program Level of CODL

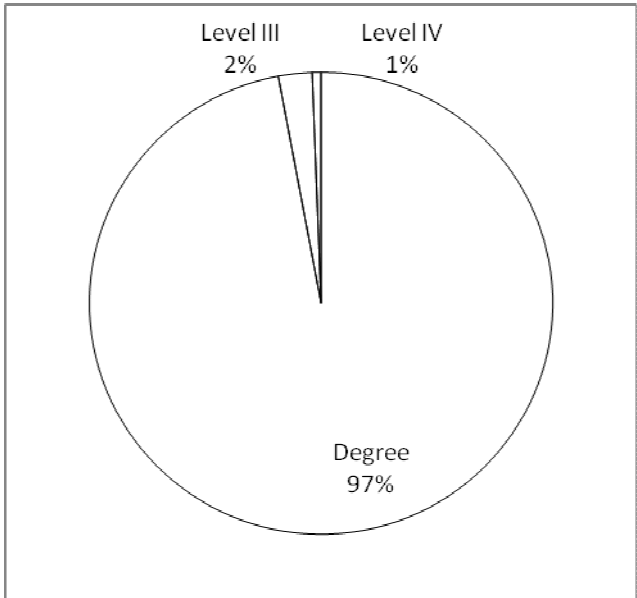


Fig. 13: Currently Active Students of CODL by Program Level

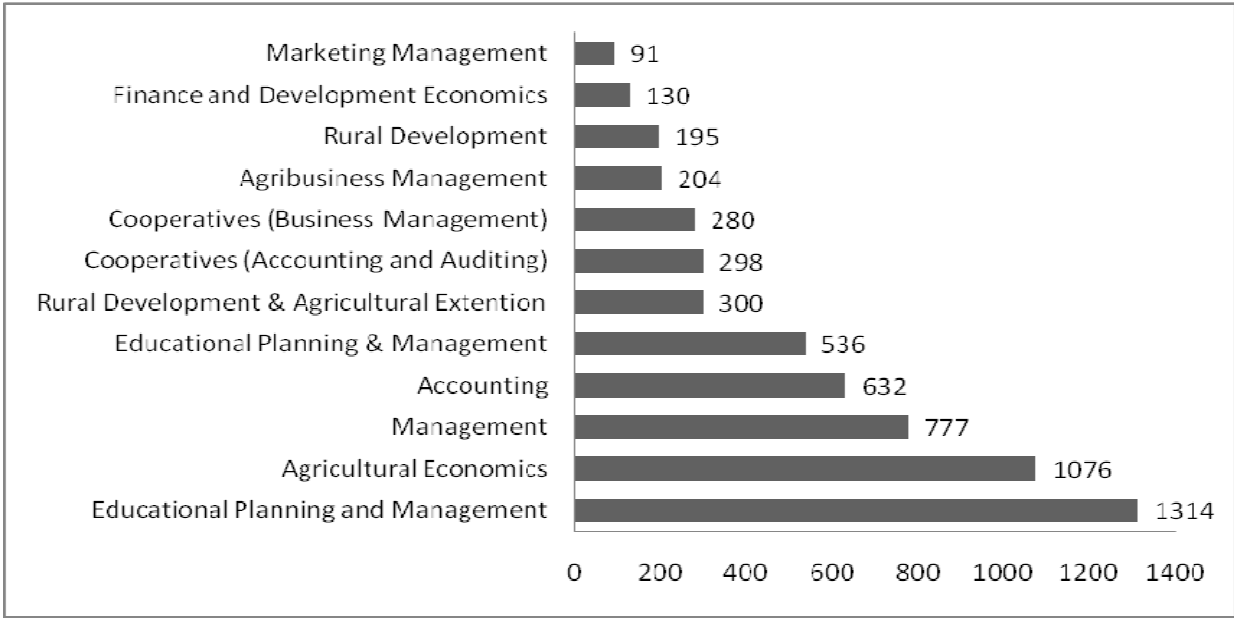


Fig 14: Currently Active Degree Program Students of CODL by Department

As can be seen from bar graph 14 (above), Educational Planning & Management, Agricultural Economics and Management departments enrolled consecutively highest numbers of degree program students in CODL which accounts 63% (3,703) of the total of currently active degree program students (which is 5,833). The three departments which are serving a few number of degree program students in CODL are Marketing Management, Finance and Development economics and Rural Development.

The Bar graph (in Fig 15) shows currently active diploma program students of CODL by department. The Accounting department alone accounts more than 72% of the entire diploma students in the division.

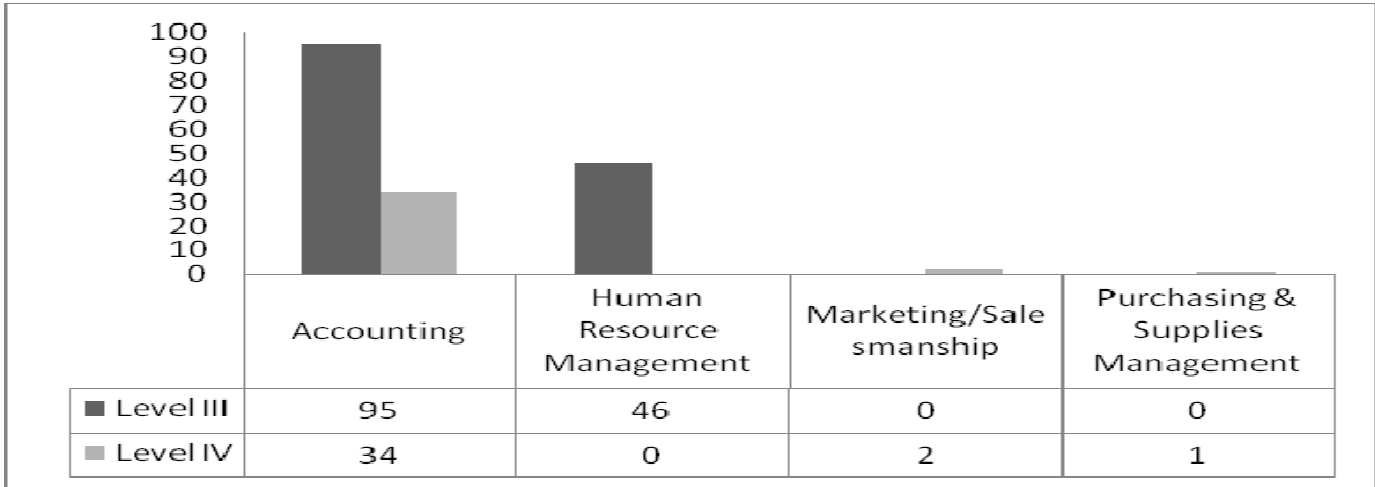


Fig. 15: Enrollment of Currently Active Diploma (Level III and Level IV) Program Students by Department (CODL)

The bar graph next page (Fig. 16) displays the overall number of students in CODL by department. Currently, out of 15 departments of the distance mode of learning division Educational Planning and Management has the highest number (1,314) of students followed by Agricultural Economics (1,076). The department of Management stands third in number (777) of currently active students in CODL. The three departments with least numbers of students in the division are Purchasing and Supplies Management (1), Marketing/Salesmanship (2) and Human Resource Management (46).





Fig. 16: Overall Currently Active Number of Distance Students by Department

## 1.5. Graduation

SMU has graduated a total of 52,581 students since 1993 when it graduated its first graduates (154 in number). The pie chart in the right (in Fig. 17) shows the proportion of distance and conventional modes of learning division graduates. Similar to the proportion of total enrollment, 71% of the total graduates, accordingly, are from the distance mode.

The pie charts (next page in Fig. 18) show the share of graduates by level of studies. As is indicated, 67% of the students were graduated in diploma where as 21% and 10% of the students graduated in degree and certificate programs, respectively.

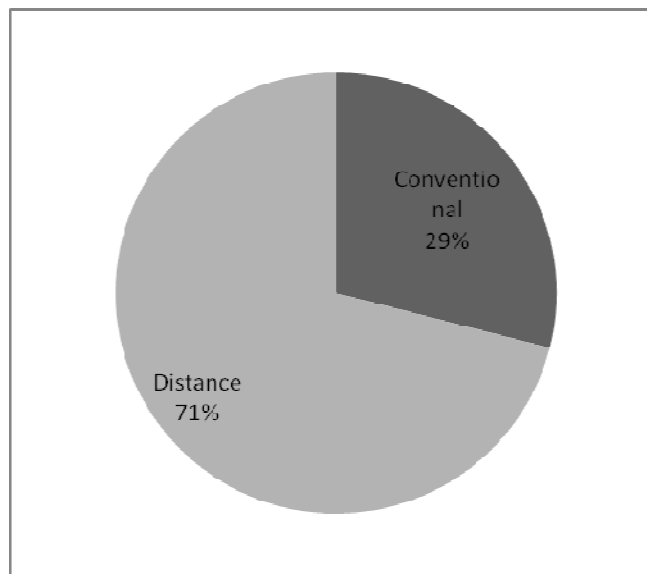


Fig 17: Share of All Graduates of SMU by Mode of Learning

The total trend in number of graduates in SMU from 1999 through 2003 EC shows a rise then a turn down, after reaching its peak in 2001 (Fig. 19 and 20). In 2001EC 11,138 students are graduated. The number of graduates in 2002EC decreased because most of the graduates were entrants of 2000EC and 2001 EC during which enrollment decline was seen. Trying to see numerical trend of graduating students according to their learning modes, the conventional mode shows a very slight decline while the distance mode is the one that gave the bigger picture to the total; CODL number of graduates rise up till 2001EC and declined then after.

67% of the University's total graduates are from Diploma programs, while the remaining 21% and 10% of the graduates are from Degree and Certificate programs, respectively.

Of the total graduates, 63% of the graduates are males. The distance learning mode graduated significantly more number of male students than female. On the other hand, the conventional mode of learning graduated more

females. Female graduates account 24% in CODL whereas they are 57% in the conventional mode of learning. Among the 3,384 graduates of 2005 E.C, 66% (2,234) are from CODL, and 21% of the year's graduates are female.

The share of female graduates from the total is 37% (Fig. 18). However, it has been improving from year to year. Diploma program graduates account the highest percentages (67%) of all time graduates of the University College. It has also been decreasing; it was 81% the previous year. Degree program, which accounted only 13% of the graduates in the previous year, has risen to 21% in 2005EC because the program is in an increasing path to overrun the share of diploma program either in enrollment or graduation in a few years of time.

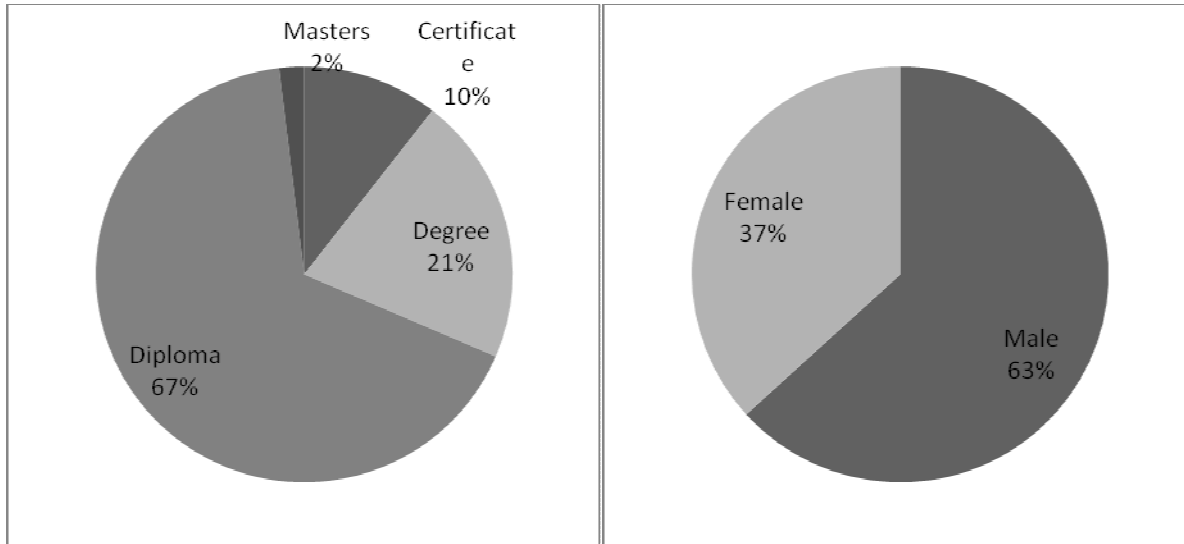


Fig. 18: Share of All Time Graduates of SMU by Program Level (left) and by Sex (Right)

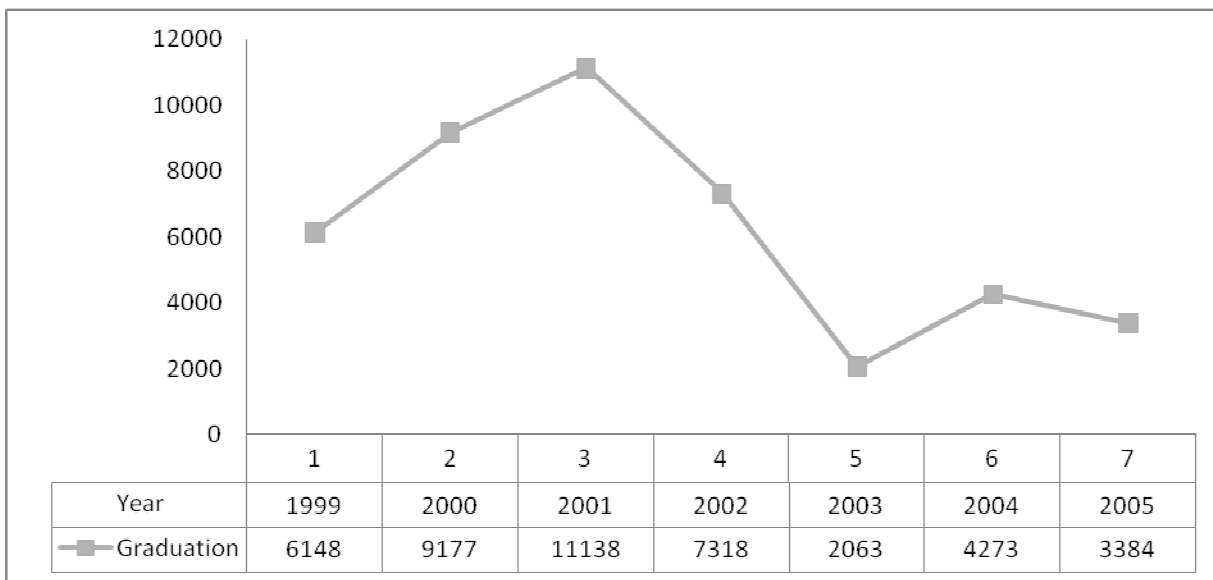


Fig. 19: Total Trend of Graduates of SMU (1999 – 2005EC)

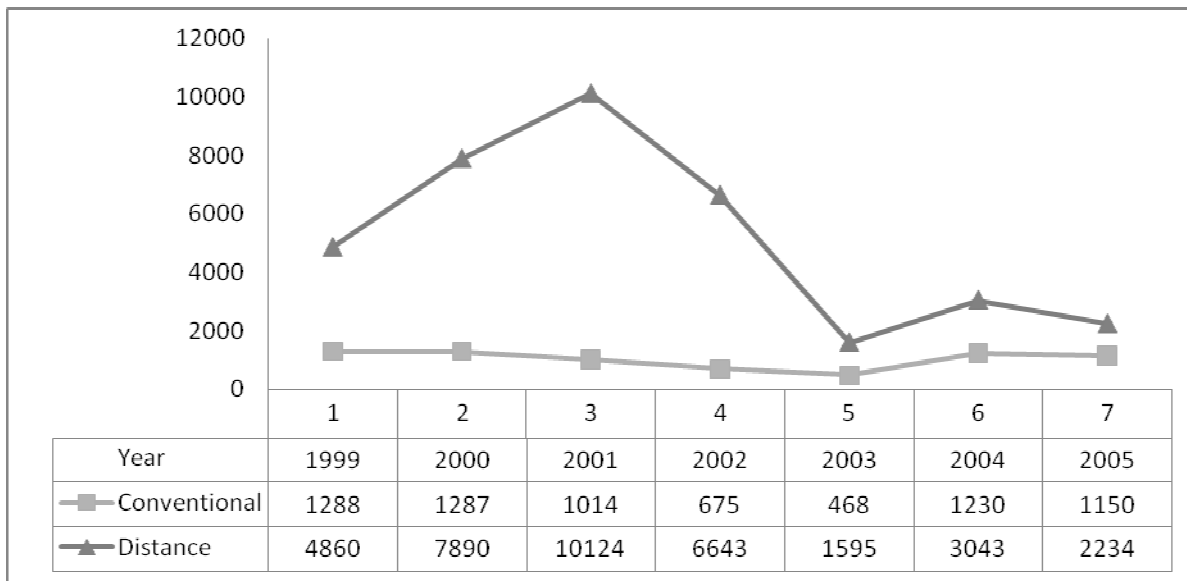


Fig. 20: Comparison of Distance and Conventional Graduates (1996 -2005E.C)

Comparison of admitted-to-graduated students in ratio is very vital to assess the graduation progression in any institution. Between 1996EC and 2005 EC, 7,734 degree program students were admitted. Nevertheless, it was only 33 % ( 3,859) of them who graduated (see Fig. 21).

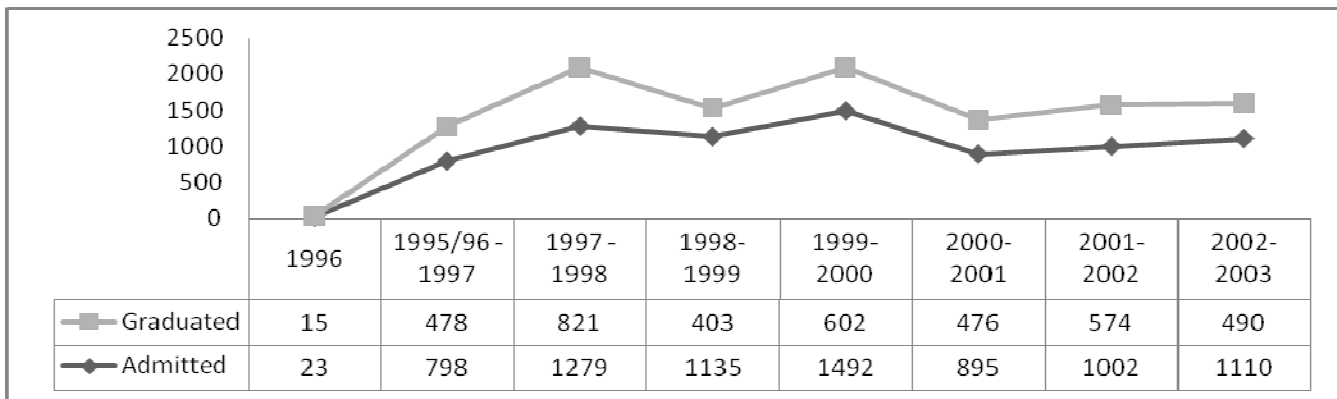


Fig. 21: Degree Program Students Admitted to Graduated Trend by Year of Graduation (Conventional Mode of Learning)

The diploma program graduated-to-admitted ratio, on the other hand, has widened for the past two years of graduation. The past eleven years of statistic shows that more than 71% of students who were admitted for diploma program were graduated as per their schedule (Fig. 22). This makes the ratio of admitted-to-graduated students for diploma programs are more effective than it is for degree programs.

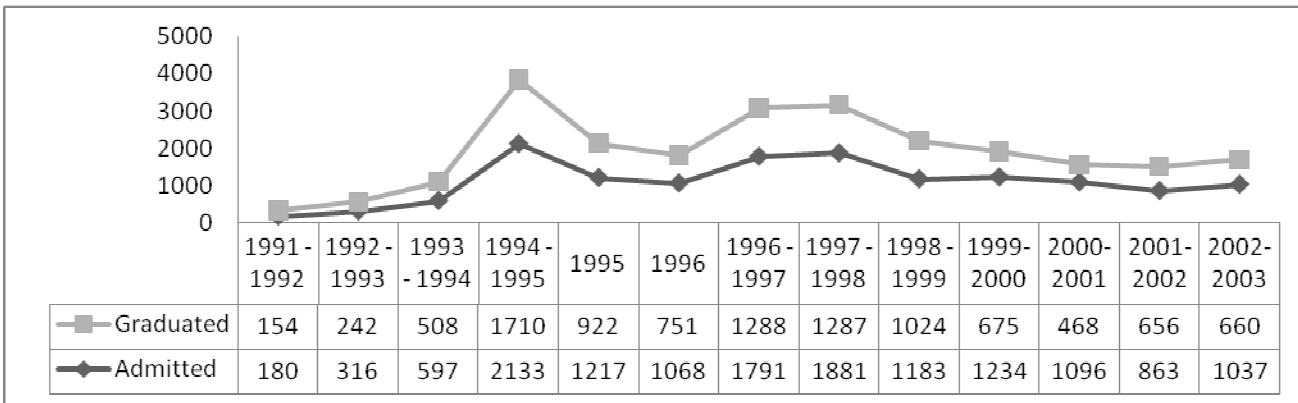


Fig 22: Diploma Program Students Admitted to Graduated Trend by Year of Graduation (Conventional Mode of Learning)

### 1.6. Number of Currently Active Students

The bar graph below (Fig. 23) presents the number of active students in both distance and conventional modes of learning. Presently, SMU has 75,497 active students. Only 20% (14,859) of these students are attending classes in the conventional mode of learning. The rest are distance students registered in 166 centers and cluster centers of the University around the Country.

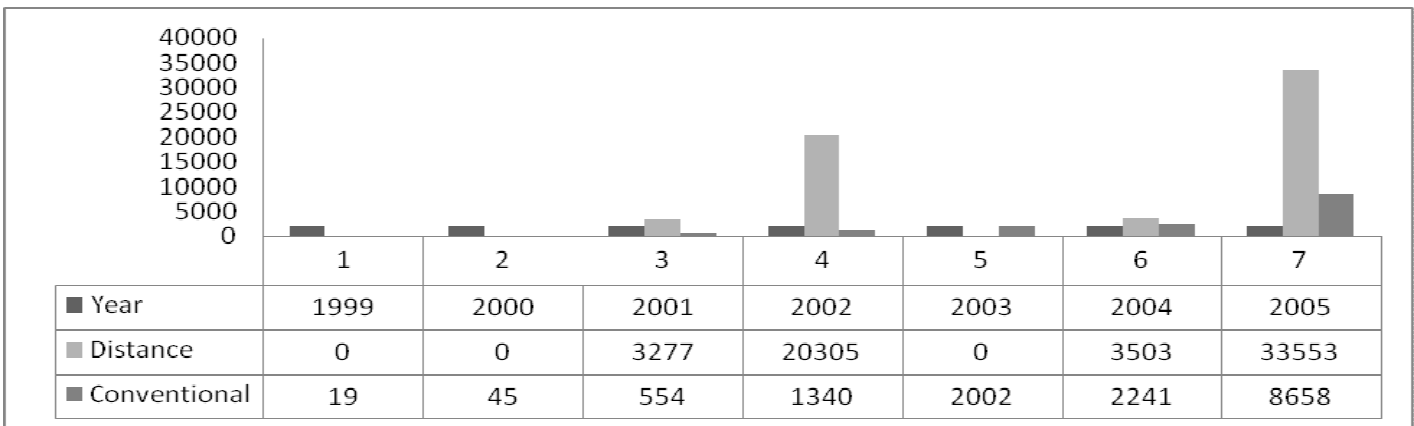


Fig. 23: Current Students by Mode of Learning & Year of Enrollment

Figure 24 (on the next page) shows that the number of active degree program students accounts the highest number (7,051) followed by diploma program students. 90% of the total active students are enrolled for degree program studies.

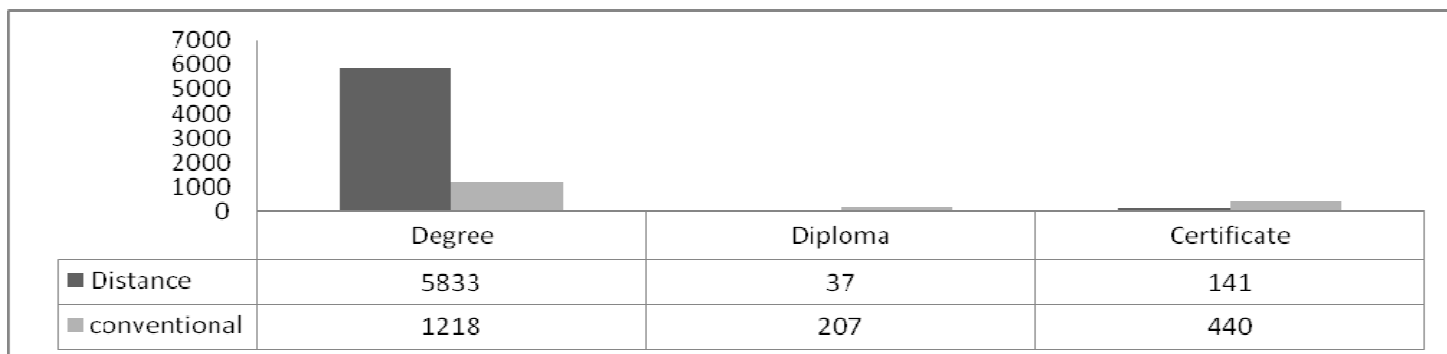


Fig. 24: Current Students by Mode of Learning & Program Level of Study

## 1.7. Post Graduate Programs

In addition to accredited programs: MBA in General Management and MBA with special emphasis on Human Resource Management, the School of Graduate Studies (SGS) launched Master's programs of Agricultural Economics, Rural Development and Agri-Business in the year 2004E.C. Since the launch of these programs, SGS enrolled 21 students for Master's in Agricultural Economics and it is undergoing registration for the rest. The MBA programs have enrolled a total of 236 students in the academic years of 2003 and 2004.

On the other hand, the University in collaboration with Indira Gandhi National Open University (IGNOU) has been offering graduate programs in 9 fields of studies since July 2006. In 2004 one more field of study, Master of Arts in Distance Education (MADE), has been started and 5 students have been enrolled to it. Registrations of SMU-IGNOU programs are held twice a year (usually in January and July). Accordingly, 14 registrations have taken place since the establishment of the collaborative program. The admission trend in SMU-IGNOU showed a rise in admission from 2006 to 2009. The fall shown in number of students in 2010 and 2011 is rose back in 2012 academic years (Fig. 25). The dramatic fall observed in 2011 was followed after the ban of distance education by the Ministry of Education and, similarly, the return indicates the lifting up of the ban.

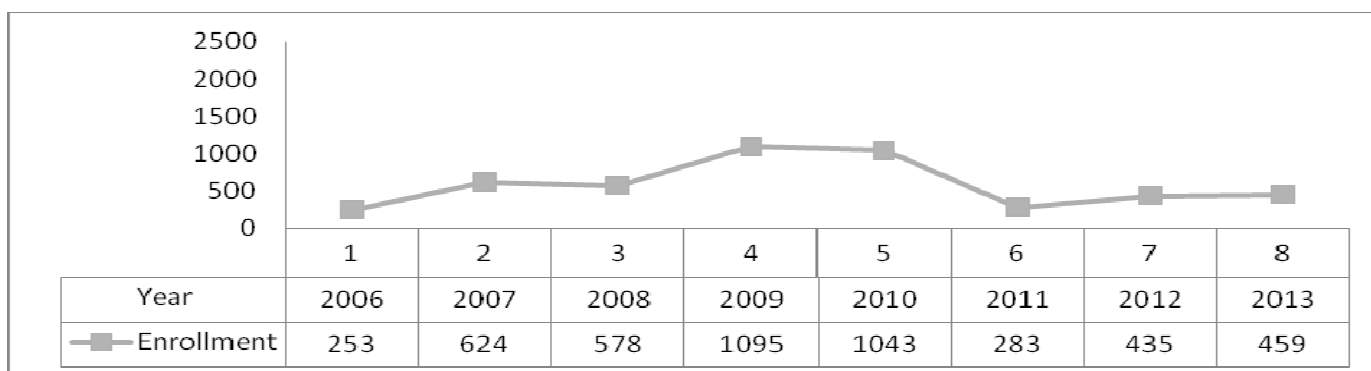


Fig. 25: Enrollment Trend of SMU-IGNOU Graduate Program Enrollment

IGNOU-SMU collaboration has graduated 953 students in four graduations since 2009; the trend of graduate students under the program has come increasing. Master of Arts in Sociology (MSO) has graduated the highest

number of students which is 333 and Master of Arts in Political Science (MPS) graduated the least number; i.e. only 1 graduate. (Fig. 26) Only 7 students were registered for MPS in 2006 and since then.

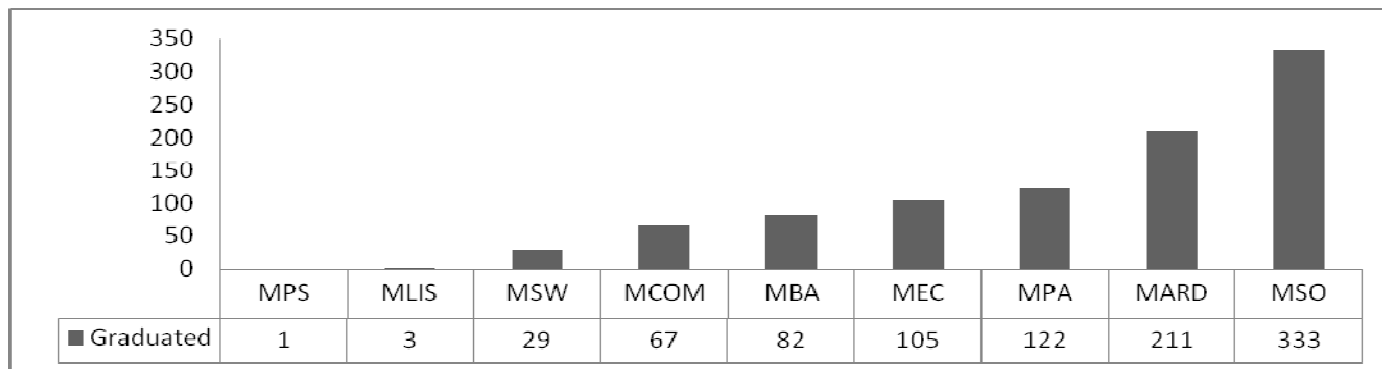


Fig. 26: IGNOU Total Enrollment Share by Program

MBA – Master of Business Administration  
 MPA – Master of Arts in Public Administration  
 MCOM – Master of Commerce  
 MARD – Master of Arts in Rural Development  
 MSO – Master of Arts in Sociology

MPS – Master of Arts in Political Science  
 MEC – Master of Arts in Economics  
 MLIS – Master of Library and Information  
 MSW – Master of Arts in Social Works

### 1.8. SMU Free Scholarships

The line graph on the next page (Fig. 27) presents free scholarships grants. SMU gave a total of 534 free scholarships given out of which nearly 37% of them are female beneficiaries while the remaining are males. They were granted the scholarship from 1997 to 2005EC. The distance and conventional modes have given scholarships to a total of 338 and 196 Male and Female students, respectively. Other three scholarships (2 for men) were given for Master’s program in 2004EC. SMU has, therefore, contributed its level best by opening its gate to the pool of knowledge it has to improve the life of the needy students.

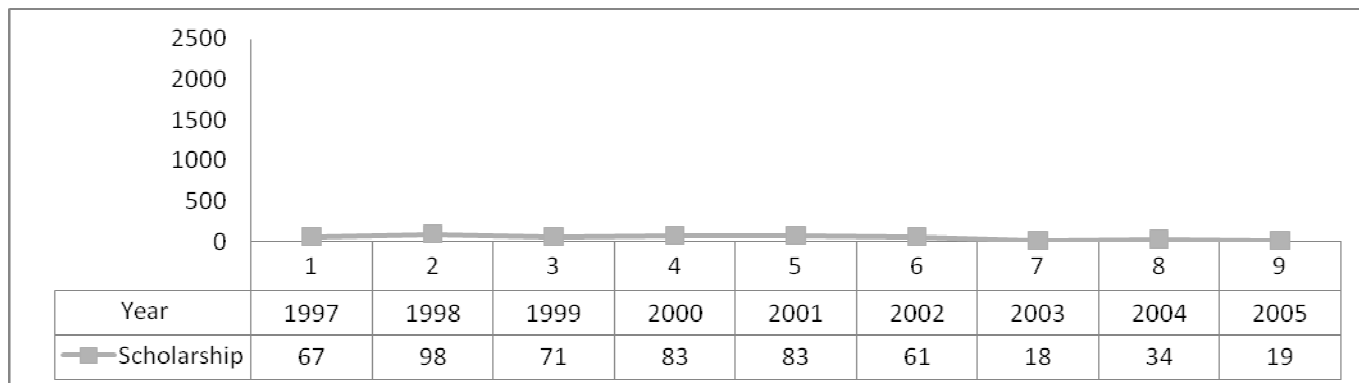


Fig. 27: Trend of Free Scholarships Given.

# PART TWO: Tables & Figures

## 2.1. Conventional Mode of Learning (Undergraduate Programs)

### 2.1.1. Enrollment

#### 2.1.1.1. Total Enrollment of Students in the Conventional Mode of Learning (1991-2005EC)

Year of Entry	Department	P r o g r a m																											
		Degree						Diploma*						10+2/Level III (Certificate)						Certificate**						Grand Total			
		Regular			Extension			Regular			Extension			Regular			Extension			Regular			Extension						
		M	F	T	M	F	T	M	F	T	M	F	T	M	F	T	M	F	T	M	F	T	M	F	T	M	F	T	
1991	Accounting							8	6	14	26	18	44														34	24	58
	Marketing Management							1	4	5																	1	4	5
	Law										7	0	7										1	0	1		8	0	8
	<b>Sub Total</b>							9	10	19	33	18	51											1	0	1	43	28	71
1992	Accounting							69	71	140	64	66	130								10	25	35	8	15	23	151	177	328
	SSOM							0	21	21	0	29	29								0	15	15	0	25	25	0	90	90
	Law										1	0	1											2	0	2	3	0	3
	Marketing Management										19	9	28								0	1	1	4	2	6	23	12	35
<b>Sub Total</b>							69	92	161	84	104	188								10	41	51	14	42	56	177	279	456	
1993	Accounting							62	56	118	74	37	111								1	16	17	5	9	14	142	118	260
	SSOM							0	37	37	0	25	25								0	11	11	0	12	12	0	85	85
	Law										21	7	28											4	2	6	25	9	34
	Marketing Management							12	12	24	16	8	24								2	7	9	2	1	3	32	28	60
<b>Sub Total</b>							74	105	179	111	77	188								3	34	37	11	24	35	199	240	439	
1994	Accounting							116	135	251	94	104	198								5	21	26	7	13	20	222	273	495
	SSOM							0	96	96	0	72	72								0	33	33	0	30	30	0	231	231
	Law							13	14	27	58	4	62											5	1	6	76	19	95
	Marketing Management							32	24	56	44	26	70								4	10	14	5	8	13	85	68	153
	Computer Science (IT)							46	11	57	48	24	72								4	10	14	2	2	4	100	47	147
<b>Sub Total</b>							207	280	487	244	230	474								13	74	87	19	54	73	483	638	1121	
1995	Accounting							247	264	511	180	153	333								37	72	109	23	31	54	487	520	1007
	SSOM							0	380	380	0	148	148								0	151	151	0	53	53	0	732	732
	Law				24	0	24	119	46	165	125	20	145														268	66	334



Year of Entry	Department	P r o g r a m																											
		Degree						Diploma*						10+2/Level III (Certificate)						Certificate**						Grand Total			
		Regular			Extension			Regular			Extension			Regular			Extension			Regular			Extension						
		M	F	T	M	F	T	M	F	T	M	F	T	M	F	T	M	F	T	M	F	T	M	F	T	M	F	T	
	Marketing Management							146	146	292	119	47	166														265	193	458
	Computer Science (IT)							139	95	234	69	31	100														208	126	334
	English										47	20	67														47	20	67
	Geography										32	10	42														32	10	42
	Mathematics										44	5	49														44	5	49
	<b>Sub Total</b>				24	0	24	651	931	1582	616	434	1050							37	223	260	23	84	107	1351	1672	3023	
1996	Accounting				52	60	112	71	51	122	173	158	331	3	22	25	6	22	28	4	21	25	8	16	24	317	350	667	
	SSOM							0	99	99	0	181	181	0	29	29	0	70	70	1	45	46	0	61	61	1	485	486	
	Law				93	13	106	44	32	76	138	25	163	3	5	8	7	8	15	1	3	4	10	5	15	296	91	387	
	Marketing Management							93	94	187	121	93	214	6	31	37	11	17	28	13	21	34	10	13	23	254	269	523	
	Computer Science (IT)							102	69	171	132	88	220	8	29	37	8	12	20	12	22	34	8	13	21	270	233	503	
	Management	17	6	23	88	108	196																				105	114	219
	Languages							39	21	60	13	32	45														52	53	105
	Social Science							14	1	15	6	4	10														20	5	25
	Teacher Education																				5	10	15	22	31	53	27	41	68
	<b>Sub Total</b>	17	6	23	233	181	414	363	367	730	583	581	1164	20	116	136	32	129	161	36	122	158	58	139	197	1342	1641	2983	
1997	Accounting	63	57	120	177	234	411	67	60	127	157	181	338	3	23	26	31	33	64	3	11	14	6	25	31	507	624	1131	
	Law	42	24	66	108	52	160	30	23	53	146	27	173	2	0	2	6	8	14	1	1	2	9	1	10	344	136	480	
	Marketing Management	16	45	61	64	71	135	31	18	49	180	73	253	8	9	17	8	33	41	13	12	25	16	14	30	336	275	611	
	Computer Science (IT)	26	10	36	36	18	54	91	66	157	121	66	187	35	16	51	25	21	46	1	2	3	1	21	22	336	220	556	
	Management	42	35	77	134	188	322																			176	223	399	
	SSOM								61	61		120	120		53	53		67	67		1	1		44	44	0	346	346	
	Languages							34	17	51	48	46	94														82	63	145
	Social Science							18	8	26	12	7	19														30	15	45
	Natural Science							10	6	16	7	5	12														17	11	28

Year of Entry	Department	P r o g r a m																										
		Degree						Diploma*						10+2/Level III (Certificate)						Certificate**						Grand Total		
		Regular			Extension			Regular			Extension			Regular			Extension			Regular			Extension					
		M	F	T	M	F	T	M	F	T	M	F	T	M	F	T	M	F	T	M	F	T	M	F	T	M	F	T
	Mathematics							12	4	16	9	7	16													21	11	32
	Teacher Education																			10	30	40	28	78	106	38	108	146
	<b>Sub Total</b>	189	171	360	519	563	1082	293	263	556	680	532	1212	48	101	149	70	162	232	28	57	85	60	183	243	1887	2032	3919
1998	Accounting	27	41	68	175	223	398	67	95	162	83	108	191	2	21	23	2	30	32	3	17	20	3	15	18	362	550	912
	Law	18	13	31	110	30	140	66	24	90	89	20	109	6	6	12	6	4	10	3	3	6	5	2	7	303	102	405
	Marketing Management	10	21	31	44	63	107	20	20	40	38	31	69	6	11	17	13	9	22	3	4	7	3	4	7	137	163	300
	Computer Science (IT)	16	13	29	22	25	47	69	40	109	59	33	92	13	25	38	7	9	16	9	16	25	9	9	18	204	170	374
	Management	18	20	38	103	143	246																			121	163	284
	SSOM								19	19		69	69		25	25		30	30		34	34		26	26	0	203	203
	Languages							24	15	39	33	63	96													57	78	135
	Social Science							20	3	23	11	7	18													31	10	41
	Natural Science							16	3	19			0													16	3	19
	Mathematics							10	13	23	9	3	12													19	16	35
	Teacher Education																				9	15	24	14	48	62	23	63
	<b>Sub Total</b>	89	108	197	454	484	938	292	232	524	322	334	656	27	88	115	28	82	110	27	89	116	34	104	138	1273	1521	2794
1999	Accounting	27	69	96	186	276	462	89	96	185	109	105	214	11	30	41	5	14	19	4	12	16	0	1	1	431	603	1034
	Law	15	21	36	80	20	100	34	18	52	48	14	62	3	11	14	1	0	1	3	2	5			184	86	270	
	Marketing Management	20	39	59	67	97	164	42	20	62	28	72	100	5	22	27	11	17	28	9	18	27			182	285	467	
	Computer Science (IT)	32	32	64	80	57	137	88	23	111	73	29	102	14	19	33	6	11	17	21	19	40	4	13	17	318	203	521
	Management	34	39	73	138	220	358																			172	259	431
	SSOM							1	40	41	0	66	66	0	38	38	0	39	39	0	27	27	0	23	23	1	233	234
	Languages							24	12	36	36	86	122													60	98	158
	Social Science							17	0	17	18	18	36													35	18	53
	Mathematics							18	5	23	16	11	27													34	16	50
	Teacher Education																				14	22	36	23	106	129	37	128
	<b>Sub Total</b>	128	200	328	551	670	1221	313	214	527	328	401	729	33	120	153	23	81	104	51	100	151	27	143	170	1454	1929	3383
2000	Accounting	29	39	68	106	145	251	65	127	192	112	179	291	6	29	35	4	24	28	6	23	29	10	17	27	338	583	921
	Law	21	13	34	45	6	51	14	14	28	55	14	69	3	5	8	2	2	4	1	0	1	3	1	4	144	55	199

Year of Entry	Department	P r o g r a m																										
		Degree						Diploma*						10+2/Level III (Certificate)						Certificate**						Grand Total		
		Regular			Extension			Regular			Extension			Regular			Extension			Regular			Extension					
		M	F	T	M	F	T	M	F	T	M	F	T	M	F	T	M	F	T	M	F	T	M	F	T	M	F	T
	Marketing management	25	31	56	27	27	54	34	57	91	93	47	140	6	18	24	19	18	37	5	6	11	14	9	23	223	213	436
	Computer Science (IT)	23	20	43	28	17	45	68	48	116	41	35	76	8	9	17	5	6	11	15	13	28	5	11	16	193	159	352
	Management	27	43	70	71	98	169																			98	141	239
	SSOM							0	78	78	0	143	143	0	23	23	0	32	32	0	22	22	0	28	28	0	326	326
	Languages										13	43	56													13	43	56
	Teacher Education																						1	35	36	1	35	36
	<b>Sub Total</b>	125	146	271	277	293	570	181	324	505	314	461	775	23	84	107	30	82	112	27	64	91	33	101	134	1010	1555	2565
2001	Accounting	47	80	127	106	124	230	73	82	155	87	74	161													313	360	673
	Law	11	11	22	31	2	33	18	12	30	49	10	59													109	35	144
	Marketing management	26	38	64	33	30	63	21	24	45	90	28	118													170	120	290
	Computer Science (IT)	24	28	52	28	16	44	48	17	65	44	24	68	19	33	52	10	31	41	19	22	41	14	39	53	206	210	416
	Management	24	36	60	63	55	118																			87	91	178
	SSOM							0	26	26	0	39	39													0	65	65
	Languages				20	47	67																			20	47	67
	<b>Sub Total</b>	132	193	325	281	274	555	160	161	321	270	175	445	19	33	52	10	31	41	19	22	41	14	39	53	905	928	1833
2002	Accounting	76	142	218	141	202	343	100	142	242	138	196	334													455	682	1137
	Computer Science (IT)	32	19	51	57	40	97	40	19	59	38	22	60													167	100	267
	Law	15	12	27	27	8	35	15	11	26	48	8	56													105	39	144
	Management	24	47	71	94	85	179						0													118	132	250
	Marketing management	36	44	80	57	40	97	32	29	61	80	36	116													205	149	354
	SSOM							30	30		31	31														0	61	61
	Languages										20	93	113													20	93	113
	Teacher Education (KG)														14	14										0	14	14
	<b>Sub Total</b>	183	264	447	376	375	751	187	231	418	324	386	710	0	14	14										1070	1270	2340
2003	Accounting	72	105	177	149	236	385	33	197	230	41	128	169	64	86	150	71	63	134							430	815	1245
	Computer Science (IT)	40	11	51	62	25	87	10	25	35	10	12	22	23	19	42	27	14	41							172	106	278

Year of Entry	Department	P r o g r a m																										
		Degree						Diploma*						10+2/Level III (Certificate)						Certificate**						Grand Total		
		Regular			Extension			Regular			Extension			Regular			Extension			Regular			Extension					
		M	F	T	M	F	T	M	F	T	M	F	T	M	F	T	M	F	T	M	F	T	M	F	T	M	F	T
	Law	0	0	0																						0	0	0
	Management	22	24	46	84	109	193																			106	133	239
	Marketing management	24	61	85	61	77	138	16	46	62	31	13	44													132	197	329
	SSOM											18	18													0	18	18
	Languages																									0	0	0
	Teacher Education (KG)																									0	0	0
	<b>Sub Total</b>	<b>158</b>	<b>201</b>	<b>359</b>	<b>356</b>	<b>447</b>	<b>803</b>	<b>59</b>	<b>268</b>	<b>327</b>	<b>82</b>	<b>171</b>	<b>253</b>	<b>87</b>	<b>105</b>	<b>192</b>	<b>98</b>	<b>77</b>	<b>175</b>							<b>840</b>	<b>1269</b>	<b>2109</b>
2004	Accounting	136	247	383	123	147	270	78	221	299	75	74	149	36	147	183	34	161	195							482	997	1479
	Computer Science (IT)	52	24	76	28	12	40																			80	36	116
	Information Systems	21	6	27				29	21	50	22	10	32	16	21	37	13	11	24							101	69	170
	Law																									0	0	0
	Management	34	35	69	60	41	101																			94	76	170
	Marketing management	38	75	113	28	29	57	25	35	60	41	13	54													132	152	284
	SSOM										0	22	22													0	22	22
	Languages																									0	0	0
	Teacher Education (KG)																									0	0	0
	<b>Sub Total</b>	<b>281</b>	<b>387</b>	<b>668</b>	<b>239</b>	<b>229</b>	<b>468</b>	<b>132</b>	<b>277</b>	<b>409</b>	<b>138</b>	<b>119</b>	<b>257</b>	<b>52</b>	<b>168</b>	<b>220</b>	<b>47</b>	<b>172</b>	<b>219</b>							<b>889</b>	<b>1352</b>	<b>2241</b>
2005	Accounting	135	311	446	184	287	471	13	64	77	13	40	53	10	120	130	20	228	248				21	45	66			
	Computer Science (IT)	48	19	67	60	11	71																					
	Information Systems			0	14	7	21							13	21	34	5	24	29									
	Law																									0	0	0
	Management	25	39	64	66	67	133																					
	Marketing management	38	62	100	61	51	112	11	32	43	12	13	25															
	SSOM																									0	0	0



### 2.1.1.2. Enrollment of Students by Department for the Last Fifteen Entries (1991 - 2005 EC)

Department	1991	1992	1993	1994	1995	1996	1997	1998	1999	2000	2001	2002	2003	2004	2005	Total
Accounting	58	328	260	495	1007	667	113 1	912	103 4	921	673	113 7	124 5	147 9	917	12264
Marketing Management	5	35	60	153	458	523	611	300	467	436	290	354	329	284	212	4517
Law	8	3	34	95	334	387	480	405	270	199	144	144				2503
SSOM		90	85	231	732	486	346	203	234	326	65	61	18	22		2899
Computer Science				147	334	503	557	374	521	352	416	267	278	116	138	4003
Information Systems														170	21	191
Management						219	399	284	431	239	178	250	239	170	197	2606
Languages					67	105	145	135	158	56	67	113				846
Social Science					42	25	45	41	53							206
Mathematics					49	0	32	35	50							166
Education Certificate						68	145	86	165	36						500
Natural Science							28	19								47
KG Teaching												14				14
<b>Total</b>	<b>71</b>	<b>456</b>	<b>439</b>	<b>1121</b>	<b>3023</b>	<b>2983</b>	<b>391 9</b>	<b>279 4</b>	<b>338 3</b>	<b>256 5</b>	<b>183 3</b>	<b>234 0</b>	<b>210 9</b>	<b>224 1</b>	<b>148 5</b>	<b>3076 2</b>

### 2.1.1.3. Enrollment Rate by Year

Year	Enrollment	Percent
1991	71	
1992	456	542.25%
1993	439	-3.73%
1994	1121	155.35%
1995	3023	169.67%
1996	2983	-1.32%
1997	3919	31.38%
1998	2794	-28.71%
1999	3383	21.08%
2000	2565	-24.18%
2001	1833	-28.54%
2002	2340	27.66%
2003	2109	-9.87%
2004	2241	6.25%
2005	1485	-33.74

NOTE: The negative numbers indicate that a decrease in number of enrollment is shown when compared to previous year of the stated years.

#### 2.1.1.4. Enrollment of Students by Faculty (1996 - 2005 EC)

##### 2.1.1.4.1. Faculty of Business – Degree students' enrollment

Year of Entry	Department	Regular			Extension			Total		
		M	F	T	M	F	T	M	F	T
1996	Accounting				52	60	112	52	60	112
	Management	17	6	23	88	108	196	105	114	219
	<b>Sub Total</b>	<b>17</b>	<b>6</b>	<b>23</b>	<b>140</b>	<b>168</b>	<b>308</b>	<b>157</b>	<b>174</b>	<b>331</b>
1997	Accounting	63	57	120	177	234	411	240	291	531
	Marketing Management	16	45	61	64	71	135	80	116	196
	Management	42	35	77	134	188	322	176	223	399
	<b>Sub Total</b>	<b>121</b>	<b>137</b>	<b>258</b>	<b>375</b>	<b>493</b>	<b>868</b>	<b>496</b>	<b>630</b>	<b>1126</b>
1998	Accounting	27	41	68	175	223	398	202	264	466
	Marketing Management	10	21	31	44	63	107	54	84	138
	Management	18	20	38	103	143	246	121	163	284
	<b>Sub Total</b>	<b>55</b>	<b>82</b>	<b>137</b>	<b>322</b>	<b>429</b>	<b>751</b>	<b>377</b>	<b>511</b>	<b>888</b>
1999	Accounting	27	69	96	186	276	462	213	345	558
	Marketing Management	20	39	59	67	97	164	87	136	223
	Management	34	39	73	138	220	358	172	259	431
	<b>Sub Total</b>	<b>81</b>	<b>147</b>	<b>228</b>	<b>391</b>	<b>593</b>	<b>984</b>	<b>472</b>	<b>740</b>	<b>1212</b>
2000	Accounting	29	39	68	106	145	251	135	184	319
	Marketing Management	25	31	56	27	27	54	52	58	110
	Management	27	43	70	71	98	169	98	141	239
	<b>Sub Total</b>	<b>81</b>	<b>113</b>	<b>194</b>	<b>204</b>	<b>270</b>	<b>474</b>	<b>285</b>	<b>383</b>	<b>668</b>
2001	Accounting	47	80	127	106	124	230	153	204	357
	Marketing Management	26	38	64	33	30	63	59	68	127
	Management	24	36	60	63	55	118	87	91	178
	<b>Sub Total</b>	<b>97</b>	<b>154</b>	<b>251</b>	<b>202</b>	<b>209</b>	<b>411</b>	<b>299</b>	<b>363</b>	<b>662</b>
2002	Accounting	76	142	218	141	202	343	100	142	242
	Marketing Mgt.	36	44	80	57	40	97	32	29	61
	Management	24	47	71	94	85	179			
	<b>Sub Total</b>	<b>136</b>	<b>233</b>	<b>369</b>	<b>292</b>	<b>327</b>	<b>619</b>	<b>132</b>	<b>171</b>	<b>303</b>
2003	Accounting	72	105	177	149	236	385	221	341	562
	Marketing Mgt.	24	61	85	61	77	138	85	138	223
	Management	22	24	46	84	109	193	106	133	239
	<b>Sub Total</b>	<b>118</b>	<b>190</b>	<b>308</b>	<b>294</b>	<b>422</b>	<b>716</b>	<b>412</b>	<b>612</b>	<b>1024</b>
2004	Accounting	136	247	383	123	147	270	259	394	653
	Marketing Mgt.	38	75	113	28	29	57	66	104	170
	Management	34	35	69	60	41	101	94	76	170
	<b>Sub Total</b>	<b>208</b>	<b>357</b>	<b>565</b>	<b>211</b>	<b>217</b>	<b>428</b>	<b>419</b>	<b>574</b>	<b>993</b>
2005	Accounting	135	311	446	184	287	471	319	598	917
	Marketing Mgt.	38	62	100	61	51	112	99	113	212
	Management	25	39	64	66	67	133	91	106	197
	<b>Sub Total</b>	<b>198</b>	<b>412</b>	<b>610</b>	<b>311</b>	<b>405</b>	<b>716</b>	<b>509</b>	<b>817</b>	<b>1326</b>
<b>Total</b>		<b>1112</b>	<b>1831</b>	<b>2943</b>	<b>2742</b>	<b>3533</b>	<b>6275</b>	<b>3558</b>	<b>4975</b>	<b>8533</b>

2.1.1.4.2. Faculty of Business – TVET students' enrollment

Faculty of Business		Program																				
		10+3/Level IV (Diploma)						10+2/Level III (Certificate)						10+1/Level II (Certificate)						Total		
		Regular			Extension			Regular			Extension			Regular			Extension			M	F	T
		M	F	T	M	F	T	M	F	T	M	F	T	M	F	T	M	F	T			
1996	Accounting	71	51	122	173	158	331	3	22	25	6	22	28	4	21	25	8	16	24	265	290	555
	Marketing Management	93	94	187	121	93	214	6	31	37	11	17	28	13	21	34	10	13	23	254	269	523
	SSOM	0	99	99	0	181	181	0	29	29	0	70	70	1	45	46	0	61	61	1	485	486
<b>Sub Total</b>		164	244	408	294	432	726	9	82	91	17	109	126	18	87	105	18	90	108	520	1044	1564
1997	Accounting	67	60	127	157	181	338	3	23	26	31	33	64	3	11	14	6	25	31	267	333	600
	Marketing Management	31	18	49	180	73	253	8	9	17	8	33	41	13	12	25	16	14	30	256	159	415
	SSOM	0	61	61		120	120		53	53		67	67		1	1		44	44	0	346	346
<b>Sub Total</b>		98	139	237	337	374	711	11	85	96	39	133	172	16	24	40	22	83	105	523	838	1361
1998	Accounting	67	95	162	83	108	191	2	21	23	2	30	32	3	17	20	3	15	18	160	286	446
	Marketing Management	20	20	40	38	31	69	6	11	17	13	9	22	3	4	7	3	4	7	83	79	162
	SSOM	0	59	59		69	69		25	25		30	30		34	34		26	26	0	243	243
<b>Sub Total</b>		87	174	261	121	208	329	8	57	65	15	69	84	6	55	61	6	45	51	243	608	851
1999	Accounting	89	96	185	109	105	214	11	30	41	5	14	19	4	12	16	0	1	1	218	258	476
	Marketing Management	42	20	62	28	72	100	5	22	27	11	17	28	9	18	27	0	0	0	95	149	244
	SSOM	1	40	41	0	66	66	0	38	38	0	39	39	0	27	27	0	23	23	1	233	234
<b>Sub Total</b>		132	156	288	137	243	380	16	90	106	16	70	86	13	57	70	0	24	24	314	640	954
2000	Accounting	65	127	192	112	179	291	6	29	35	4	24	28	6	23	29	10	17	27	203	399	602
	Marketing Management	34	57	91	93	47	140	6	18	24	19	18	37	5	6	11	14	9	23	171	155	326
	SSOM	0	78	78	0	143	143	0	23	23	0	32	32	0	22	22	0	28	28	0	326	326
<b>Sub Total</b>		99	262	361	205	369	574	12	70	82	23	74	97	11	51	62	24	54	78	374	880	1254
2001	Accounting	73	82	155	87	74	161													160	156	316
	Marketing Management	21	24	45	90	28	118													111	52	163
	SSOM	0	26	26	0	39	39													0	65	65
<b>Sub Total</b>		94	132	226	177	141	318													271	273	544
2002	Accounting	100	142	242	138	196	334													238	338	576



Faculty of Business		Program																				
		10+3/Level IV (Diploma)						10+2/Level III (Certificate)						10+1/Level II (Certificate)						Total		
		Regular			Extension			Regular			Extension			Regular			Extension			M	F	T
		M	F	T	M	F	T	M	F	T	M	F	T	M	F	T	M	F	T			
	Marketing Management	32	29	61	80	36	116													112	65	177
	SSOM	0	30	30	0	31	31													0	61	61
<b>Sub Total</b>		<b>132</b>	<b>201</b>	<b>333</b>	<b>218</b>	<b>263</b>	<b>481</b>													<b>350</b>	<b>464</b>	<b>814</b>
2003	Accounting	97	283	380	142	191	333													239	474	713
	Marketing Management	16	46	62	31	13	44													47	59	106
	SSOM					18	18													0	18	18
<b>Sub Total</b>		<b>113</b>	<b>329</b>	<b>442</b>	<b>173</b>	<b>222</b>	<b>395</b>													<b>286</b>	<b>551</b>	<b>837</b>
2004	Accounting	78	221	299	75	74	149	36	147	183	34	161	195							223	603	826
	Marketing Management	25	35	60	41	13	54													66	48	114
	SSOM				0	22	22													0	22	22
<b>Sub Total</b>		<b>103</b>	<b>256</b>	<b>359</b>	<b>116</b>	<b>109</b>	<b>225</b>	<b>36</b>	<b>147</b>	<b>183</b>	<b>34</b>	<b>161</b>	<b>195</b>	<b>0</b>	<b>0</b>	<b>0</b>	<b>0</b>	<b>0</b>	<b>0</b>	<b>289</b>	<b>673</b>	<b>962</b>
2005	Accounting	13	64	77	13	40	53	10	120	130	20	228	248	0	0	0	21	45	66	77	497	574
	Marketing Management	11	32	43	12	13	25													23	45	68
<b>Sub Total</b>		<b>24</b>	<b>96</b>	<b>110</b>	<b>25</b>	<b>53</b>	<b>78</b>	<b>10</b>	<b>120</b>	<b>130</b>	<b>20</b>	<b>228</b>	<b>248</b>	<b>0</b>	<b>0</b>	<b>0</b>	<b>21</b>	<b>45</b>	<b>66</b>	<b>100</b>	<b>542</b>	<b>642</b>
<b>Total</b>		<b>1046</b>	<b>1989</b>	<b>3025</b>	<b>1803</b>	<b>2414</b>	<b>4217</b>	<b>102</b>	<b>651</b>	<b>753</b>	<b>164</b>	<b>844</b>	<b>1008</b>	<b>64</b>	<b>274</b>	<b>338</b>	<b>91</b>	<b>341</b>	<b>432</b>	<b>3270</b>	<b>6513</b>	<b>9783</b>

#### 2.1.1.4.3. Faculty of Law – All Degree Students Enrollment

Year of Entry	Program								
	Regular			Extension			Total		
	M	F	T	M	F	T	M	F	T
1995				24	0	24	24		24
1996				93	13	106	93	13	106
1997	42	24	66	108	52	160	150	76	226
1998	18	13	31	110	30	140	128	43	171
1999	15	21	36	80	20	100	95	41	136
2000	21	13	34	45	6	51	66	19	85
2001	11	11	22	31	2	33	42	13	55
2002*	15	12	27	27	8	35	42	20	62
<b>Total</b>	<b>122</b>	<b>94</b>	<b>216</b>	<b>518</b>	<b>131</b>	<b>649</b>	<b>640</b>	<b>225</b>	<b>865</b>

\* New registration of law students in private higher institutions is banned since 2003EC by MoE.

#### 2.1.1.4.4. Faculty of Law – TVET Students Enrollment

Year of Entry	10+3 (Diploma)						10+2 (Certificate)						10+1 (Certificate)						Grand Total		
	Regular			Extension			Regular			Extension			Regular			Extension					
	M	F	T	M	F	T	M	F	T	M	F	T	M	F	T	M	F	T	M	F	T
1996	44	32	76	138	25	163	3	5	8	7	8	15	1	3	4	10	5	15	203	78	281
1997	30	23	53	146	27	173	2	0	2	6	8	14	1	1	2	9	1	10	194	60	254
1998	66	24	90	89	20	109	6	6	12	6	4	10	3	3	6	5	2	7	175	59	234
1999	34	18	52	48	14	62	3	11	14	1	0	1	3	2	5	0	0	0	89	45	134
2000	14	14	28	55	14	69	3	5	8	2	2	4	1	0	1	3	1	4	78	36	114
2001	18	12	30	49	10	59													67	22	89
2002*	15	11	26	48	8	56													63	19	82
<b>Total</b>	<b>221</b>	<b>134</b>	<b>355</b>	<b>573</b>	<b>118</b>	<b>691</b>	<b>17</b>	<b>27</b>	<b>44</b>	<b>22</b>	<b>22</b>	<b>44</b>	<b>9</b>	<b>9</b>	<b>18</b>	<b>27</b>	<b>9</b>	<b>36</b>	<b>869</b>	<b>319</b>	<b>1188</b>

\* New registration of law students in private higher institutions is banned since 2003EC by MoE.

#### 2.1.1.4.5. Faculty of Informatics – Degree Students Enrollment

Year of Entry	Department	Regular			Extension			Total		
		M	F	T	M	F	T	M	F	T
1997	Computer Science (IT)	26	10	36	36	18	54	62	28	90
1998	Computer Science (IT)	16	13	29	22	25	47	38	38	76
1999	Computer Science (IT)	32	32	64	80	57	137	112	89	201
2000	Computer Science (IT)	23	20	43	28	17	45	51	37	88
2001	Computer Science (IT)	24	28	52	28	16	44	52	44	96
2002	Computer Science (IT)	32	19	51	57	40	97	89	59	148
2003	Computer Science (IT)	40	11	51	62	25	87	102	36	138
2004	Computer Science (IT)	52	24	76	28	12	40	80	36	116
	Information Systems	21	6	27				21	6	27
2005	Computer Science	48	19	67	60	11	71	108	30	138
	Information Technology	0	0	0	14	7	21	14	7	21
<b>Total</b>		<b>314</b>	<b>182</b>	<b>496</b>	<b>415</b>	<b>228</b>	<b>643</b>	<b>729</b>	<b>410</b>	<b>1139</b>

**2.1.1.4.6. Faculty of Informatics – TVET Students Enrollment**

Year of Entry	Department	10+3 (Diploma)						10+2 (Certificate)						10+1 (Certificate)						Grand Total		
		Regular			Extension			Regular			Extension			Regular			Extension					
		M	F	T	M	F	T	M	F	T	M	F	T	M	F	T	M	F	T	M	F	T
1996	Computer Science	102	69	171	132	88	220	8	29	37	8	12	20	12	22	34	8	13	21	270	233	503
1997	Computer Science	91	66	157	121	66	187	35	16	51	25	21	46	1	2	3	1	21	22	274	192	466
1998	Computer Science	69	40	109	59	33	92	13	25	38	7	9	16	9	16	25	9	9	18	166	132	298
1999	Computer Science	88	23	111	73	29	102	14	19	33	6	11	17	21	19	40	4	13	17	206	114	320
2000	Computer Science	68	48	116	41	35	76	8	9	17	5	6	11	15	13	28	5	11	16	142	122	264
2001	Computer Science	48	17	65	44	24	68	19	33	52	10	31	41	19	22	41	14	39	53	154	166	320
2002	Computer Science	40	19	59	38	22	60													78	41	119
2003	Computer Science	10	25	35	10	12	22	23	19	42	27	14	41							70	70	140
2004	Information Systems	29	21	50	22	10	32	16	21	37	13	11	24							80	63	143
2005	Information Tech.							13	21	34	5	24	29							18	45	63
<b>Total</b>		<b>545</b>	<b>328</b>	<b>873</b>	<b>540</b>	<b>319</b>	<b>859</b>	<b>151</b>	<b>192</b>	<b>341</b>	<b>106</b>	<b>139</b>	<b>245</b>	<b>77</b>	<b>94</b>	<b>171</b>	<b>41</b>	<b>106</b>	<b>147</b>	<b>1458</b>	<b>1187</b>	<b>2636</b>

**2.1.1.4.7. Faculty of Teachers Education – TVET Enrollment**

Year of entry	Department	Program														
		10+3 (Diploma)						10+1 (Certificate)						Grand Total		
		Regular			Extension			Regular			Extension					
M	F	T	M	F	T	M	F	T	M	F	T	M	F	T		
1995	Languages (English)				47	20	67							47	20	67
	Social Science (Geography)				32	10	42							32	10	42
	Mathematics				44	5	49							44	5	49
	<b>Sub Total</b>				<b>123</b>	<b>35</b>	<b>158</b>							<b>123</b>	<b>35</b>	<b>158</b>
1996	Languages	39	21	60	13	32	45							52	53	105
	Social Science	14	1	15	6	4	10							20	5	25
	Teacher Education							5	10	15	22	31	53	27	41	68
	Natural Science															
<b>Sub Total</b>	<b>53</b>	<b>22</b>	<b>75</b>	<b>19</b>	<b>36</b>	<b>55</b>	<b>5</b>	<b>10</b>	<b>15</b>	<b>22</b>	<b>31</b>	<b>53</b>	<b>99</b>	<b>99</b>	<b>198</b>	
1997	Languages	34	17	51	48	46	94							82	63	145
	Social Science	18	8	26	12	7	19							30	15	45
	Mathematics	12	4	16	9	7	16							21	11	32
	Teacher Education							10	30	40	28	78	106	38	108	146
	Natural Science	10	6	16	7	5	12							17	11	28
	<b>Sub Total</b>	<b>74</b>	<b>35</b>	<b>109</b>	<b>76</b>	<b>65</b>	<b>141</b>	<b>10</b>	<b>30</b>	<b>40</b>	<b>28</b>	<b>78</b>	<b>106</b>	<b>188</b>	<b>208</b>	<b>396</b>
1998	Languages	24	15	39	33	63	96							57	78	135
	Social Science	20	3	23	11	7	18							31	10	41
	Mathematics	10	13	23	9	3	12							19	16	35
	Teacher Education	10		10				9	15	24	14	48	62	33	63	96
	Natural Science	16	3	19										16	3	19
	<b>Sub Total</b>	<b>80</b>	<b>34</b>	<b>114</b>	<b>53</b>	<b>73</b>	<b>126</b>	<b>9</b>	<b>15</b>	<b>24</b>	<b>14</b>	<b>48</b>	<b>62</b>	<b>156</b>	<b>170</b>	<b>326</b>
1999	Languages	24	12	36	36	86	122							60	98	158
	Social Science	17	0	17	18	18	36							35	18	53
	Mathematics	18	5	23	16	11	27							34	16	50

Year of entry	Department	Program														
		10+3 (Diploma)						10+1 (Certificate)						Grand Total		
		Regular			Extension			Regular			Extension					
		M	F	T	M	F	T	M	F	T	M	F	T	M	F	T
	Teacher Education							14	22	36	23	106	129	37	128	165
	<b>Sub Total</b>	<b>59</b>	<b>17</b>	<b>76</b>	<b>70</b>	<b>115</b>	<b>185</b>	<b>14</b>	<b>22</b>	<b>36</b>	<b>23</b>	<b>106</b>	<b>129</b>	<b>166</b>	<b>260</b>	<b>426</b>
2000	Languages				13	43	56							13	43	56
	Teacher Education										1	35	36	1	35	36
	<b>Sub Total</b>				<b>13</b>	<b>43</b>	<b>56</b>				<b>1</b>	<b>35</b>	<b>36</b>	<b>14</b>	<b>78</b>	<b>92</b>
2001	Languages				20	47	67							20	47	67
2002*	Languages				20	93	113							20	93	113
	KG	0	14	14											14	14
	<b>Sub Total</b>	<b>20</b>	<b>107</b>	<b>127</b>										<b>40</b>	<b>154</b>	<b>194</b>
	<b>Total</b>	<b>286</b>	<b>215</b>	<b>501</b>	<b>374</b>	<b>414</b>	<b>788</b>	<b>38</b>	<b>77</b>	<b>115</b>	<b>88</b>	<b>298</b>	<b>386</b>	<b>786</b>	<b>1004</b>	<b>1790</b>

\* Public schools banned the recruitment of teachers graduating from private institutions. Therefore, no new entrants are recorded after 2002EC.

## 2.1.2. Graduation

### 2.1.2.1. Total Number of Graduates - by Department, Program, Sex & Year of Entry (1996EC – 2005EC)

Year of Grad.	Department	Program																	
		Degree									Diploma								
		Regular			Extension			Total			Regular			Extension			Total		
		M	F	T	M	F	T	M	F	T	M	F	T	M	F	T	M	F	T
1996	Accounting										220	231	451	65	79	144	285	310	595
	Marketing Management										114	94	208	33	18	51	147	112	259
	Law										109	40	149	48	4	52	157	44	201
	Computer Science/IT										109	72	181	25	19	44	134	91	225
	Secretarial Science										0	363	363	0	67	67	0	430	430
	<b>Sub Total</b>											<b>552</b>	<b>800</b>	<b>1352</b>	<b>171</b>	<b>187</b>	<b>358</b>	<b>723</b>	<b>987</b>
1997	Accounting													139	131	270	139	131	270
	Marketing Management													91	40	131	91	40	131
	Law													98	14	112	98	14	112
	Computer Science/IT													62	25	87	62	25	87
	Secretarial Science													0	182	182	0	182	182
	Social Science (Geography)													32	11	43	32	11	43
	Languages (English)													49	19	68	49	19	68
	Mathematics													27	2	29	27	2	29
<b>Sub Total</b>														<b>498</b>	<b>424</b>	<b>922</b>	<b>498</b>	<b>424</b>	<b>922</b>
1998	Management	13	2	15				13	2	15									
	Accounting										73	125	198				73	125	198
	Marketing Management										69	87	156				69	87	156
	Law										26	22	48				26	22	48
	Computer Science/IT										78	76	154				78	76	154
	Secretarial Science											158	158					158	158
	Social Science (Geography)													9		9	9		9
	Languages (English)													18	10	28	18	10	28
<b>Sub Total</b>	<b>13</b>	<b>2</b>	<b>15</b>				<b>13</b>	<b>2</b>	<b>15</b>	<b>246</b>	<b>468</b>	<b>714</b>	<b>27</b>	<b>10</b>	<b>37</b>	<b>273</b>	<b>478</b>	<b>751</b>	
1999	Management	29	16	45	46	50	96	75	66	141									
	Accounting	38	37	75	51	60	111	89	97	186	42	77	119	64	93	157	106	170	276
	Marketing Management	10	21	31	8	6	14	18	27	45	22	24	46	57	62	119	79	86	165
	Law	25	17	42	18	5	23	43	22	65	48	28	76	57	13	70	105	41	146
	Computer Science/IT	20	7	27	12	2	14	32	9	41	46	74	120	68	62	130	114	136	250
	Secretarial Science										0	110	110	0	228	228	0	338	338
	Social Science (Geography)										11	2	13	5	5	10	16	7	23

Year of Grad.	Department	Program																		
		Degree									Diploma									
		Regular			Extension			Total			Regular			Extension			Total			
		M	F	T	M	F	T	M	F	T	M	F	T	M	F	T	M	F	T	
	Languages (English)										18	14	32	13	25	38	31	39	70	
	Mathematics										10	2	12				10	2	12	
	Natural Science										6	2	8				6	2	8	
	<b>Sub Total</b>	<b>122</b>	<b>98</b>	<b>220</b>	<b>135</b>	<b>123</b>	<b>258</b>	<b>257</b>	<b>221</b>	<b>478</b>	<b>203</b>	<b>333</b>	<b>536</b>	<b>264</b>	<b>488</b>	<b>752</b>	<b>467</b>	<b>821</b>	<b>1288</b>	
2000	Management	14	16	30	106	83	189	120	99	219										
	Accounting	15	21	36	120	176	296	135	197	332	63	86	149	92	132	224	155	218	373	
	Marketing Management	4	9	13	36	31	67	40	40	80	18	28	46	60	33	93	78	61	139	
	Law	20	26	46	76	12	88	96	38	134	45	22	67	76	15	91	121	37	158	
	Computer Science/IT	14	16	30	15	11	26	29	27	56	60	59	119	64	53	117	124	112	236	
	Secretarial Science											98	98		124	124		222	222	
	Social Science (Geography)											12	1	13	11	5	16	23	6	29
	Languages (English)											18	9	27	21	41	62	39	50	89
	Mathematics											6	2	8	8	7	15	14	9	23
	Teacher Education																			
	Natural Science											11	1	12	4	2	6	15	3	18
	<b>Sub Total</b>	<b>67</b>	<b>88</b>	<b>155</b>	<b>353</b>	<b>313</b>	<b>666</b>	<b>420</b>	<b>401</b>	<b>821</b>	<b>233</b>	<b>306</b>	<b>539</b>	<b>336</b>	<b>412</b>	<b>748</b>	<b>569</b>	<b>718</b>	<b>1287</b>	
2001	Management	14	13	27	57	73	130	71	86	157										
	Accounting	13	27	40	34	46	80	47	73	120	45	40	85	46	84	130	91	124	215	
	Marketing Mgt	6	6	12	18	18	36	24	24	48	33	46	79	35	28	63	68	74	142	
	Law	7	10	17	25	6	31	32	16	48	27	19	46	43	13	56	70	32	102	
	Computer Science/IT	8	8	16	7	7	14	15	15	30	70	40	110	39	28	67	109	68	177	
	Secretarial Science											71	71	142	52	52	104	123	123	246
	Social Science (Geography)											7	0	7	8	1	9	15	1	16
	Languages (English)											11	3	14	12	32	44	23	35	58
	Mathematics											13	3	16	7	3	10	20	6	26
	Teacher Education														0	32	32	0	32	32
	<b>Sub Total</b>	<b>48</b>	<b>64</b>	<b>112</b>	<b>141</b>	<b>150</b>	<b>291</b>	<b>189</b>	<b>214</b>	<b>403</b>	<b>277</b>	<b>222</b>	<b>499</b>	<b>242</b>	<b>273</b>	<b>515</b>	<b>519</b>	<b>495</b>	<b>1014</b>	
2002	Management	11	22	33	61	78	139	72	100	172										
	Accounting	23	23	46	72	118	190	95	141	236	26	61	87	40	46	86	66	107	173	
	Marketing Mgt	15	18	33	19	33	52	34	51	85	16	27	43	37	24	61	53	51	104	
	Law	7	2	9	41	9	50	48	11	59	26	14	40	23	9	32	49	23	72	
	Computer Science/IT	13	10	23	15	12	27	28	22	50	38	25	63	38	22	60	76	47	123	
	Secretarial Science							0	0	0		52	52		54	54	0	106	106	

Year of Grad.	Department	Program																	
		Degree									Diploma								
		Regular			Extension			Total			Regular			Extension			Total		
		M	F	T	M	F	T	M	F	T	M	F	T	M	F	T	M	F	T
	Social Science (Geography)							0	0	0			0	8	9	17	8	9	17
	Languages (English)							0	0	0			0	15	54	69	15	54	69
	Mathematics							0	0	0			0	4	7	11	4	7	11
	Teacher Education							0	0	0			0				0	0	0
	<b>Sub Total</b>	<b>69</b>	<b>75</b>	<b>144</b>	<b>208</b>	<b>250</b>	<b>458</b>	<b>277</b>	<b>325</b>	<b>602</b>	<b>106</b>	<b>179</b>	<b>285</b>	<b>165</b>	<b>225</b>	<b>390</b>	<b>271</b>	<b>404</b>	<b>675</b>
2003	Management	9	16	25	34	53	87	43	69	112									
	Accounting	23	51	74	47	114	161	70	165	235	23	44	67	56	54	110	79	98	177
	Marketing Mgt	16	18	34	10	12	22	26	30	56	18	8	26	40	25	65	58	33	91
	Law	3	11	14	7	5	12	10	16	26	10	9	19	30	8	38	40	17	57
	Computer Science/IT	11	11	22	17	8	25	28	19	47	10	3	13	20	13	33	30	16	46
	Secretarial Science										0	18	18	0	45	45	0	63	63
	Social Science (Geography)																		
	Languages (English)													9	25	34	9	25	34
<b>Sub Total</b>	<b>62</b>	<b>107</b>	<b>169</b>	<b>115</b>	<b>192</b>	<b>307</b>	<b>177</b>	<b>299</b>	<b>476</b>	<b>61</b>	<b>82</b>	<b>143</b>	<b>155</b>	<b>170</b>	<b>325</b>	<b>216</b>	<b>252</b>	<b>468</b>	
2004	Management	15	34	49	31	39	70	46	73	119									
	Accounting	55	103	158	62	79	141	117	182	299									
	Marketing Management	19	25	44	15	17	32	34	42	76									
	Law	13	12	25	15	4	19	28	16	44									
	Computer Science/IT	11	8	19	9	8	17	20	16	36									
	Secretarial Science																		
	<b>Sub Total</b>	<b>113</b>	<b>182</b>	<b>295</b>	<b>132</b>	<b>147</b>	<b>279</b>	<b>245</b>	<b>329</b>	<b>574</b>									
2005	Accounting	40	85	125	45	81	126	85	166	251									
	Management	11	20	31	37	47	84	48	67	115									
	Marketing Management	6	24	30	19	25	44	25	49	74									
	Law	5	4	9	11	1	12	16	5	21									
	Computer Science/IT	0	2	2	14	13	27	14	15	29									
	Information Technology																		
	Secretarial Science																		
<b>Sub Total</b>	<b>62</b>	<b>135</b>	<b>197</b>	<b>126</b>	<b>167</b>	<b>293</b>	<b>188</b>	<b>302</b>	<b>490</b>										
<b>Total</b>	<b>556</b>	<b>751</b>	<b>1307</b>	<b>1210</b>	<b>1342</b>	<b>2552</b>	<b>1766</b>	<b>2093</b>	<b>3859</b>	<b>1678</b>	<b>2390</b>	<b>4068</b>	<b>1858</b>	<b>2189</b>	<b>4047</b>	<b>3536</b>	<b>4579</b>	<b>8115</b>	

NOTE: SMU has been graduating students since 1993; the 1993 – 1995 graduates are all from 12+2 (diploma) and 12+1 (certificate) program, whose statistic is presented in section 2.1.2.3.

2.1.2.2. Total Graduates 1996 – 2005EC

Year of Grad.	Grand Total		
	M	F	T
1996	723	987	1710
1997	498	424	922
1998	286	480	766
1999	724	1042	1766
2000	989	1119	2108
2001	708	709	1417
2002	548	729	1277
2003	393	551	944
2004	245	329	574
2005	188	302	490
<b>Total</b>	<b>5302</b>	<b>6672</b>	<b>11974</b>

2.1.2.3. Total Diploma (12+2) Program Graduates (1993-1995EC)

Year of Graduation	Department	Regular	Extension	Total
1993	Accounting	129		129
	Marketing Management	6		6
	SSOM	19		19
	<b>Sub Total</b>	<b>154</b>		<b>154</b>
1994	Accounting	90	64	154
	Marketing Management	13	11	24
	Law	0	5	5
	SSOM	32	27	59
	<b>Sub Total</b>	<b>135</b>	<b>107</b>	<b>242</b>
1995*	Accounting	193	59	252
	Marketing Management	45	13	58
	Law	23	26	49
	SSOM	85	24	109
	Computer Science	40	0	40
	<b>Sub Total</b>	<b>386</b>	<b>122</b>	<b>508</b>
<b>Total</b>		<b>521</b>	<b>229</b>	<b>750</b>

\* No graduates after 1995 because 12+2 program phased out.



2.1.2.4. Number of Certificate (12+1) Graduates by Department, Program, Sex & Year of Entry (1993 - 1995EC)

Year of Graduation	Department	CERTIFICATE								
		Regular			Extension			Total		
		M	F	T	M	F	Total	M	F	Total
1993	Accounting	19	28	47	8	10	18	27	38	65
	Marketing Management	1	3	4	3	1	4	4	4	8
	Law			0	3	0	3	3	0	3
	SSOM	0	15	15	0	16	16	0	31	31
	Computer Science									
	<b>Sub Total</b>	<b>20</b>	<b>46</b>	<b>66</b>	<b>14</b>	<b>27</b>	<b>41</b>	<b>34</b>	<b>73</b>	<b>107</b>
1994	Accounting	1	5	6	2	4	6	3	9	12
	Marketing Management	1	5	6	1	1	2	2	6	8
	Law			0	2	1	3	2	1	3
	SSOM	0	10	10	0	5	5	0	15	15
	Computer Science									
	<b>Sub Total</b>	<b>2</b>	<b>20</b>	<b>22</b>	<b>5</b>	<b>11</b>	<b>16</b>	<b>7</b>	<b>31</b>	<b>38</b>
1995*	Accounting	1	9	10			0	1	9	10
	Marketing Management	2	3	5	1	3	4	3	6	9
	Law			0	2	1	3	2	1	3
	SSOM	0	2	2	0	26	26	0	28	28
	Computer Science	0	7	7	0	1	1	0	8	8
	<b>Sub Total</b>	<b>3</b>	<b>21</b>	<b>24</b>	<b>3</b>	<b>31</b>	<b>34</b>	<b>6</b>	<b>52</b>	<b>58</b>
<b>Grand Total</b>		<b>25</b>	<b>87</b>	<b>112</b>	<b>22</b>	<b>69</b>	<b>91</b>	<b>47</b>	<b>156</b>	<b>203</b>

\* No graduates after 1995 because 12+1 program phased out.

2.1.2.5. Certificate (10+2/10+1) Graduates by Year, Program, Department and Division (1996-2003EC)

Year of Grad.	Department	Program																	
		10+2 or Level III (Certificate)									10+1 or Level II (Certificate)								
		Regular			Extension			Total			Regular			Extension			Total		
		M	F	T	M	F	T	M	F	T	M	F	T	M	F	T	M	F	T
1996	Teacher Education										7	8	15				7	8	15
	<b>Total</b>										<b>7</b>	<b>8</b>	<b>15</b>				<b>7</b>	<b>8</b>	<b>15</b>
1997	Teacher Education										4	24	28	20	31	51	24	55	79
	<b>Total</b>										<b>4</b>	<b>24</b>	<b>28</b>	<b>20</b>	<b>31</b>	<b>51</b>	<b>24</b>	<b>55</b>	<b>79</b>
1998	Accounting										6	26	32				6	26	32
	Marketing Management										15	23	38				15	23	38
	Law										4	2	6				4	2	6
	Computer Science / IT										15	34	49				15	34	49
	Secretarial Science										0	63	63				0	63	63
	Teacher Education										9	11	20	18	66	84	27	77	104
	<b>Total</b>										<b>49</b>	<b>159</b>	<b>208</b>	<b>18</b>	<b>66</b>	<b>84</b>	<b>67</b>	<b>225</b>	<b>292</b>
1999	Accounting	0	2	2		1	1		3	3	0	1	1				0	1	1
	Marketing Management										0	1	1				0	1	1
	Law	0	1	1		1	1		2	2									
	Computer Science / IT	0	4	4					4	4	1	0	1				1	0	1
	Secretarial Science	0	1	1		1	1		2	2	0	1	1				0	1	1
	Teacher Education										14	22	36	8	39	47	22	61	83
	<b>Sub-Total</b>	<b>0</b>	<b>8</b>	<b>8</b>		<b>3</b>	<b>3</b>		<b>11</b>	<b>11</b>	<b>15</b>	<b>25</b>	<b>40</b>	<b>8</b>	<b>39</b>	<b>47</b>	<b>23</b>	<b>64</b>	<b>87</b>
2000	Teacher Education													9	69	78	9	69	78
	<b>Sub-Total</b>													<b>9</b>	<b>69</b>	<b>78</b>	<b>9</b>	<b>69</b>	<b>78</b>
2001	Teacher Education														32	32		32	32
	<b>Sub-Total</b>														<b>32</b>	<b>32</b>		<b>32</b>	<b>32</b>
2002	Teacher Education	37	45	82	23	68	91	60	113	173									
	<b>Sub-Total</b>	<b>37</b>	<b>45</b>	<b>82</b>	<b>23</b>	<b>68</b>	<b>91</b>	<b>60</b>	<b>113</b>	<b>173</b>									
2003	Accounting	2	10	12				2	10	12									
	Information Technology	1	8	9	5	19	24	6	27	33									
	<b>Sub-Total</b>	<b>3</b>	<b>18</b>	<b>21</b>	<b>5</b>	<b>19</b>	<b>24</b>	<b>8</b>	<b>37</b>	<b>45</b>	<b>0</b>	<b>0</b>	<b>0</b>	<b>0</b>	<b>0</b>	<b>0</b>	<b>0</b>	<b>0</b>	<b>0</b>
<b>Grand Total</b>		<b>40</b>	<b>71</b>	<b>111</b>	<b>28</b>	<b>90</b>	<b>118</b>	<b>68</b>	<b>161</b>	<b>229</b>	<b>75</b>	<b>216</b>	<b>291</b>	<b>55</b>	<b>237</b>	<b>292</b>	<b>130</b>	<b>453</b>	<b>583</b>

2.1.2.5.1. Certificate (Level IV and Level III) Graduates by Year, Program, Department and Division (2004E.C -2005 E.C)

Year of Graduation	Department	Program																	
		Level IV /Diploma									Level III/Diploma								
		Regular			Extension			Total			Regular			Extension			Total		
	M	F	T	M	F	T	M	F	T	M	F	T	M	F	T	M	F	T	
2004	Accounting	46	74	120	42	43	85	88	117	205	69	88	157	8	26	34	77	114	191
	Management																		
	Marketing	10	9	19	38	14	52	48	23	71									
	Information Technology	19	6	25	14	9	23	33	15	48	25	22	47	5	7	12	30	29	59
	Secretarial Science	0	17	17	0	21	21	0	38	38									
	Law	9	6	15	23	6	29	32	12	44									
	<b>Sub-Total</b>	<b>84</b>	<b>112</b>	<b>196</b>	<b>117</b>	<b>93</b>	<b>210</b>	<b>201</b>	<b>205</b>	<b>406</b>	<b>94</b>	<b>110</b>	<b>204</b>	<b>13</b>	<b>33</b>	<b>46</b>	<b>107</b>	<b>143</b>	<b>250</b>
2005	Accounting	26	129	155	68	79	147	94	208	302	19	92	111	38	52	90	57	144	201
	Management																		
	Marketing	5	34	39	32	14	46	37	48	85									
	Information Technology	4	6	10	17	4	21	21	10	31									
	Secretarial Science				0	19	19	0	19	19									
	Law				18	4	22	18	4	22									
	<b>Sub-Total</b>	<b>35</b>	<b>169</b>	<b>204</b>	<b>135</b>	<b>110</b>	<b>255</b>	<b>170</b>	<b>289</b>	<b>459</b>	<b>19</b>	<b>92</b>	<b>111</b>	<b>38</b>	<b>52</b>	<b>90</b>	<b>57</b>	<b>144</b>	<b>201</b>
<b>Grand Total</b>	<b>119</b>	<b>281</b>	<b>400</b>	<b>252</b>	<b>211</b>	<b>465</b>	<b>371</b>	<b>494</b>	<b>865</b>	<b>113</b>	<b>202</b>	<b>315</b>	<b>51</b>	<b>85</b>	<b>136</b>	<b>164</b>	<b>287</b>	<b>451</b>	

### 2.1.2.6. All Graduates by Program, Year and Sex (1993-2005EC)

Year of Grad.	Program											
	Degree			Diploma			Certificate			Grand total		
	M	F	T	M	F	T	M	F	T	M	F	T
1993						154	34	73	107			261
1994						242	7	31	38			280
1995						508	6	52	58			566
1996				723	978	1701	7	8	15	730	986	1716
1997				498	424	922	24	55	79	522	479	1001
1998	13	2	15	273	478	751	67	225	292	353	705	1058
1999	257	221	478	467	821	1288	23	64	87	747	1106	1853
2000	420	401	821	569	718	1287	9	69	78	998	1188	2186
2001	189	214	403	519	495	1014		32	32	708	741	1449
2002	277	325	602	271	404	675	60	113	173	608	842	1450
2003	177	299	476	216	252	468	8	37	45	401	588	989
2004	245	329	574				308	348	656	553	667	1230
2005	188	302	490				227	433	660	415	735	1150
<b>Total</b>	<b>1766</b>	<b>2093</b>	<b>3859</b>			<b>9010</b>	<b>780</b>	<b>1540</b>	<b>2320</b>			<b>15189</b>

NOTE: Diagonally shaded cells in the above table refer to whose data are not available.

There are no diploma program graduates after year 2003 E.C.

### 2.1.3. Attrition Rate

#### 2.1.3.1. Total Number of Withdrawals and Drop outs (1997 - 2000EC)

##### 2.1.3.1.1. Diploma Program (Attrition)

Year of Withdrawals	Department	Regular	Ext	Total
1997	Accounting	32	31	63
	Marketing Management	20	56	76
	Law	11	20	31
	Computer Science(IT)	24	51	75
	SSOM	37	21	58
	Geography	3	3	6
	English	7	14	21
	Mathematics		1	1
	<b>Total</b>		<b>134</b>	<b>197</b>
1998	Accounting	12	35	47
	Marketing Management	32	19	51
	Law	9	29	38
	Computer Science(IT)	26	25	51
	SSOM	22	25	47
	Social Science	2	5	7
	Languages	1	14	15
	<b>Total</b>		<b>104</b>	<b>152</b>
1999	Accounting	13	18	31
	Marketing Management	18	9	27
	Law	15	5	20
	Computer Science(IT)	22	12	34
	SSOM	9	18	27
	Social Science	4	2	6
	Languages	2	9	11

Year of Withdrawals	Department	Regular	Ext	Total
	<b>Total</b>	<b>83</b>	<b>73</b>	<b>156</b>
<b>2000</b>	Accounting	22	40	<b>62</b>
	Marketing Management	13	11	<b>24</b>
	Law	6	14	<b>20</b>
	Computer Science(IT)	2	2	<b>4</b>
	SSOM	1	3	<b>4</b>
	Languages	2	14	<b>16</b>
	Mathematics		1	<b>1</b>
	<b>Total</b>	<b>46</b>	<b>85</b>	<b>131</b>
<b>Total</b>		<b>367</b>	<b>507</b>	<b>874</b>

#### 2.1.3.1..2. Degree Program (Attrition)

Year of Withdrawal	Department	Regular	Extension	Total
<b>1997</b>	Accounting	10	53	<b>63</b>
	Marketing Management	11	15	<b>26</b>
	Management	13	40	<b>53</b>
	Law	11	31	<b>42</b>
	Computer Science	8	11	<b>19</b>
	<b>Sub Total</b>	<b>53</b>	<b>150</b>	<b>203</b>
<b>1998</b>	Accounting	39	130	<b>169</b>
	Marketing Management	23	36	<b>59</b>
	Management	22	109	<b>131</b>
	Law	15	27	<b>42</b>
	Computer Science	25	38	<b>63</b>
	<b>Sub Total</b>	<b>124</b>	<b>340</b>	<b>464</b>
<b>1999</b>	Accounting	15	82	<b>97</b>
	Marketing Management	7	23	<b>30</b>
	Management	8	50	<b>58</b>
	Law	4	26	<b>30</b>
	Computer Science	12	13	<b>25</b>
	<b>Sub Total</b>	<b>46</b>	<b>194</b>	<b>240</b>
<b>2000</b>	Accounting	28	160	<b>188</b>
	Marketing Management	26	25	<b>51</b>
	Management	20	98	<b>118</b>
	Law	26	62	<b>88</b>
	Computer Science	9	15	<b>24</b>
	<b>Sub Total</b>	<b>109</b>	<b>360</b>	<b>469</b>
<b>2001</b>	Accounting	12	75	<b>87</b>
	Marketing Management	14	17	<b>31</b>
	Management	11	4	<b>15</b>
	Law	8	14	<b>22</b>
	Computer Science	4	7	<b>11</b>
	<b>Sub Total</b>	<b>49</b>	<b>117</b>	<b>166</b>
<b>2002</b>	Accounting	13	47	<b>60</b>
	Marketing Management	2	12	<b>14</b>
	Management	9	34	<b>43</b>
	Law	2	8	<b>10</b>
	Computer Science	10	11	<b>21</b>
	<b>Sub Total</b>	<b>36</b>	<b>112</b>	<b>148</b>
<b>2003</b>	Accounting	37	111	<b>148</b>
	Marketing Management	27	31	<b>58</b>

Year of Withdrawal	Department	Regular	Extension	Total
	Management	25	67	92
	Law	9	14	23
	Computer Science	18	19	37
	<b>Sub Total</b>	<b>116</b>	<b>242</b>	<b>358</b>
2004	Accounting	32	82	114
	Marketing Management	12	25	37
	Management	6	33	39
	Law	2	5	7
	Computer Science	9	16	25
	<b>Sub Total</b>	<b>61</b>	<b>161</b>	<b>222</b>
2005	Accounting	96	151	247
	Marketing Management	47	46	93
	Management	20	56	76
	Law	6	13	19
	Computer Science	26	25	51
	<b>Sub Total</b>	<b>195</b>	<b>291</b>	<b>486</b>
<b>Total</b>		<b>789</b>	<b>1967</b>	<b>2756</b>

#### 2.1.3.2. Number of Readmitted Degree Students

Year & Semester	Department	Regular	Extension	Total
1999	Accounting	21	81	102
	Computer Science	7	21	28
	Law	10	21	31
	Management	12	55	67
	Marketing Management	9	24	33
	<b>Sub Total</b>	<b>59</b>	<b>202</b>	<b>261</b>
2000 Sem- I	Accounting	7	61	68
	Computer Science	5	10	15
	Law	9	17	26
	Management	5	44	49
	Marketing Management	4	17	21
	<b>Sub Total</b>	<b>30</b>	<b>149</b>	<b>179</b>
2000 Sem-II	Accounting	8	50	58
	Computer Science	3	7	10
	Law	2	9	11
	Management	7	26	33
	Marketing Management	2	8	10
	<b>Sub Total</b>	<b>22</b>	<b>100</b>	<b>122</b>
2001 Sem-I	Accounting	9	59	68
	Computer Science	7	12	19
	Law	4	13	17
	Management	14	55	69
	Marketing Management	7	22	29
	<b>Sub Total</b>	<b>41</b>	<b>161</b>	<b>202</b>
2001 Sem-II	Accounting	1	84	85
	Computer Science	1	9	10
	Law		7	7
	Management	11	4	15
	Marketing Management	7	2	9
	<b>Sub Total</b>	<b>20</b>	<b>106</b>	<b>126</b>
2002 Sem-I	Accounting	6	34	40
	Computer Science	1	7	8
	Law	4	3	7
	Management	3	16	19

Year & Semester	Department	Regular	Extension	Total
	Marketing Management	6	9	15
	<b>Sub Total</b>	<b>20</b>	<b>69</b>	<b>89</b>
2002 Sem-II	Accounting	8	28	36
	Computer Science	3	8	11
	Law	1	11	12
	Management	3	18	21
	Marketing Management	5	4	9
	<b>Sub Total</b>	<b>20</b>	<b>69</b>	<b>89</b>
2003 Sem-I	Accounting	15	47	62
	Computer Science	7	6	13
	Law	8	7	15
	Management	5	30	35
	Marketing Management	8	16	24
	<b>Sub Total</b>	<b>43</b>	<b>106</b>	<b>149</b>
2003 Sem-II	Accounting	14	36	50
	Computer Science	6	9	15
	Law	0	3	3
	Management	0	15	15
	Marketing Management	5	9	14
	<b>Sub Total</b>	<b>25</b>	<b>72</b>	<b>97</b>
2004 Sem-I	Accounting	34	76	110
	Computer Science	8	15	23
	Law	2	5	7
	Management	5	27	32
	Marketing Management	7	16	23
	<b>Sub Total</b>	<b>56</b>	<b>139</b>	<b>195</b>
2004-Sem-II	<b>Accounting</b>	<b>14</b>	<b>29</b>	<b>43</b>
	<b>Computer Science</b>	<b>4</b>	<b>4</b>	<b>8</b>
	<b>Law</b>	<b>1</b>	<b>2</b>	<b>3</b>
	<b>Management</b>	<b>3</b>	<b>15</b>	<b>18</b>
	<b>Marketing Management</b>	<b>5</b>	<b>6</b>	<b>11</b>
	<b>Sub Total</b>	<b>27</b>	<b>56</b>	<b>83</b>
2004-Sem-III	<b>Accounting</b>	<b>8</b>	<b>15</b>	<b>23</b>
	<b>Computer Science</b>	<b>4</b>	<b>5</b>	<b>9</b>
	<b>Law</b>	<b>0</b>	<b>0</b>	<b>0</b>
	<b>Management</b>	<b>1</b>	<b>7</b>	<b>8</b>
	<b>Marketing Management</b>	<b>3</b>	<b>2</b>	<b>5</b>
	<b>Sub Total</b>	<b>16</b>	<b>29</b>	<b>45</b>
2005-Sem-I	<b>Accounting</b>	<b>19</b>	<b>49</b>	<b>68</b>
	<b>Computer Science</b>	<b>6</b>	<b>7</b>	<b>13</b>
	<b>Law</b>	<b>8</b>	<b>11</b>	<b>19</b>
	<b>Management</b>	<b>7</b>	<b>35</b>	<b>42</b>
	<b>Marketing Management</b>	<b>21</b>	<b>23</b>	<b>44</b>
	<b>Sub Total</b>	<b>61</b>	<b>125</b>	<b>186</b>
2005-Sem-II	<b>Accounting</b>	<b>7</b>	<b>34</b>	<b>41</b>
	<b>Computer Science</b>	<b>1</b>	<b>5</b>	<b>6</b>
	<b>Law</b>	<b>0</b>	<b>1</b>	<b>1</b>
	<b>Management</b>	<b>5</b>	<b>15</b>	<b>20</b>
	<b>Marketing Management</b>	<b>5</b>	<b>8</b>	<b>13</b>
	<b>Sub Total</b>	<b>18</b>	<b>63</b>	<b>81</b>
2005-Sem-III	<b>Accounting</b>	<b>15</b>	<b>18</b>	<b>33</b>
	<b>Computer Science</b>	<b>1</b>	<b>1</b>	<b>2</b>
	<b>Law</b>	<b>1</b>	<b>2</b>	<b>3</b>
	<b>Management</b>	<b>5</b>	<b>8</b>	<b>13</b>
	<b>Marketing Management</b>	<b>4</b>	<b>3</b>	<b>7</b>

Year & Semester	Department	Regular	Extension	Total
	<b>Sub Total</b>	<b>26</b>	<b>32</b>	<b>58</b>
<b>Total</b>		<b>457</b>	<b>1422</b>	<b>1879</b>

#### 2.1.3.3. Admitted to Graduated Rate by Entry - Diploma Program

Year of Entry	Admitted	Graduated	Admitted to Graduated	Year of Grad.	Remark
1991 - 1992	180	154	85.56%	1993	Regular
1992 - 1993	316	242	76.58%	1994	1991-92 (Extension) & 1993 (Regular)
1993 - 1994	597	508	85.09%	1995	1993 (Extension) & 1994 (Regular)
1994 - 1995	2133	1710	80.17%	1996	1994 (Extension) & 1995 (Regular)
1995	1217	922	75.76%	1997	1995 (Extension)
1996	1068	751	70.32%	1998	1996 (Regular)
1996 -1997	1791	1288	71.92%	1999	1996 (Extension) & 1997 (Regular)
1997 -1998	1881	1287	68.42%	2000	1997 (Extension) & 1998 (Regular)
1998 - 1999	1183	1024	86.56%	2001	1998 (Extension) & 1999 (Regular)
1999-2000	1234	675	54.70%	2002	1999 (Extension) & 2000 (Regular)
2000-2001	1096	468	42.70%	2003	2000 (Extension) & 2001 (Regular)
2001-2002	863	656	76.01%	2004	2001(Extension)&2002(Regular)
2002-2003	1037	660	63.65%	2005	2002(Extension) & 2003(Regular)
<b>Total</b>	<b>14596</b>	<b>10345</b>	<b>70.86%</b>	<b>1993 - 2005</b>	

#### 2.1.3.4. Admitted to Graduated Rate by Entry – Degree Program

Year of Entry	Admitted	Graduated	Admitted to Graduated	Year of Graduation	Remark
1996	23	15	65.22%	1998	1996 (Regular)
1995/96 – 1997	798	478	59.90%	1999	1996 (Extension) & 1997 (Regular)
1997 -1998	1279	821	64.19%	2000	1997 (Extension) & 1998 (Regular)
1998-1999	1135	403	35.51%	2001	1998 (Extension) & 1999 (Regular)
1999-2000	1492	602	40.35%	2002	1999 (Extension) & 2000 (Regular)
2000-2001	895	476	53.18%	2003	2000 (Extension) & 2001 (Regular)
2001-2002	1002	574	57.29%	2004	2001(Extension)&2002(Regular)
2002-2003	1110	490	44.14%	2005	2002(Extension)&2003(Regular)
<b>Total</b>	<b>7734</b>	<b>3859</b>	<b>49.90%</b>	<b>1998 - 2005</b>	



## 2.1.4. Currently Active Students

### 2.1.4.1. All Degree, TVET and Teacher Education Active Students by Year of Entry, Department, Program & Sex

Year of Entry	Department	DEGREE									LEVEL IV / 10+3									LEVEL III								
		REGULAR			EXTENSION			TOTAL			REGULAR			EXTENSION			TOTAL			REGULAR			EXTENSION			TOTAL		
		M	F	T	M	F	T	M	F	T	M	F	T	M	F	T	M	F	T	M	F	T	M	F	T	M	F	T
2005	Accounting	115	283	398	139	240	379	254	523	777	12	63	75	13	40	53	25	103	128	11	120	131	20	224	244	31	344	375
	Marketing	33	64	97	39	26	65	72	90	162	13	31	44	12	14	26	25	45	70									
	Computer Sci.	46	19	65	44	8	52	90	27	117																		
	Information Technology				7	3	10	7	3	10				5	4	9	5	4	9	13	21	34	6	25	31	19	46	65
	SSOM																											
	Management	22	34	56	45	51	96	67	85	152																		
	<b>Sub Total</b>	<b>216</b>	<b>400</b>	<b>616</b>	<b>274</b>	<b>328</b>	<b>602</b>	<b>490</b>	<b>728</b>	<b>1218</b>	<b>25</b>	<b>94</b>	<b>119</b>	<b>30</b>	<b>58</b>	<b>88</b>	<b>55</b>	<b>152</b>	<b>207</b>	<b>24</b>	<b>141</b>	<b>165</b>	<b>26</b>	<b>249</b>	<b>275</b>	<b>50</b>	<b>390</b>	<b>440</b>
2004	Accounting	136	247	383	123	147	270	259	394	653	78	221	299	75	74	149	153	295	448	36	147	183	34	161	195	70	308	378
	Marketing	38	75	113	28	29	57	66	104	170	25	35	60	41	13	54	66	48	114									
	Computer Sci. / IT	52	24	76	28	12	40	80	36	116																		
	Information Systems	21	6	27				21	6	27	29	21	50	22	10	32	51	31	82	16	21	37	13	11	24	29	32	61
	SSOM													0	22	22	0	22	22									
	Management	34	35	69	60	41	101	94	76	170																		
	<b>Sub Total</b>	<b>281</b>	<b>387</b>	<b>668</b>	<b>239</b>	<b>229</b>	<b>468</b>	<b>520</b>	<b>616</b>	<b>1136</b>	<b>132</b>	<b>277</b>	<b>409</b>	<b>138</b>	<b>119</b>	<b>257</b>	<b>270</b>	<b>396</b>	<b>666</b>	<b>52</b>	<b>168</b>	<b>220</b>	<b>47</b>	<b>172</b>	<b>219</b>	<b>99</b>	<b>340</b>	<b>439</b>
2003	Accounting	54	103	157	136	249	385	190	352	542	36	191	227	41	136	177	77	327	404	69	88	157	73	68	141	142	156	298
	Marketing	22	48	70	42	70	112	64	118	182	12	42	54	38	30	68	50	72	122									
	Computer Sci. / IT	11	7	18	32	13	45	43	20	63	13	27	40	13	18	31	26	45	71	25	22	47	36	16	52	61	38	99
	SSOM													0	25	25	0	25	25									
	Management	11	11	22	75	99	174	86	110	196																		
	<b>Sub Total</b>	<b>98</b>	<b>169</b>	<b>267</b>	<b>285</b>	<b>431</b>	<b>716</b>	<b>383</b>	<b>600</b>	<b>983</b>	<b>61</b>	<b>260</b>	<b>321</b>	<b>92</b>	<b>209</b>	<b>301</b>	<b>153</b>	<b>469</b>	<b>622</b>	<b>94</b>	<b>110</b>	<b>204</b>	<b>109</b>	<b>84</b>	<b>193</b>	<b>203</b>	<b>194</b>	<b>397</b>
2002	Accounting	55	103	158	81	137	218	136	240	376	46	74	120	72	93	165	118	167	285				8	26	34	8	26	34
	Marketing	19	25	44	31	36	67	50	61	111	10	9	19	31	17	48	41	26	67									
	Computer Sci. / IT	11	8	19	27	19	46	38	27	65	19	6	25	14	3	17	33	9	42				5	7	12	5	7	12
	SSOM											17	17	0	13	13		30	30									
	Management	15	34	49	50	63	113	65	97	162																		
	Law	11	9	20	22	5	27	33	14	47	9	6	15	16	3	19	25	9	34									
	Languages													17	58	75	17	58	75									
<b>Sub Total</b>	<b>111</b>	<b>179</b>	<b>290</b>	<b>211</b>	<b>260</b>	<b>471</b>	<b>322</b>	<b>439</b>	<b>761</b>	<b>84</b>	<b>112</b>	<b>196</b>	<b>150</b>	<b>187</b>	<b>337</b>	<b>234</b>	<b>299</b>	<b>533</b>				<b>13</b>	<b>33</b>	<b>46</b>	<b>13</b>	<b>33</b>	<b>46</b>	
2001	Accounting				62	79	141	62	79	141				42	43	85	42	43	85									
	Marketing				15	17	32	15	17	32				38	14	52	38	14	52									
	Computer Sci. / IT				9	8	17	9	8	17				14	9	23	14	9	23									
	SSOM													0	21	21	0	21	21									
	Management				31	39	70	31	39	70																		

Year of Entry	Department	DEGREE									LEVEL IV / 10+3									LEVEL III											
		REGULAR			EXTENSION			TOTAL			REGULAR			EXTENSION			TOTAL			REGULAR			EXTENSION			TOTAL					
		M	F	T	M	F	T	M	F	T	M	F	T	M	F	T	M	F	T	M	F	T	M	F	T	M	F	T			
	Law	8	7	15	16	0	16	24	7	31				23	6	29	23	6	29												
	Languages													15	38	53	15	38	53												
	<b>Sub Total</b>	<b>8</b>	<b>7</b>	<b>15</b>	<b>133</b>	<b>143</b>	<b>276</b>	<b>141</b>	<b>150</b>	<b>291</b>				<b>132</b>	<b>131</b>	<b>263</b>	<b>132</b>	<b>131</b>	<b>263</b>												
2000	Law	13	12	25	17	3	20	30	15	45																					
	<b>Sub Total</b>	<b>13</b>	<b>12</b>	<b>25</b>	<b>17</b>	<b>3</b>	<b>20</b>	<b>30</b>	<b>15</b>	<b>45</b>																					
1999	Law				15	4	19	15	4	19																					
	<b>Sub Total</b>				<b>15</b>	<b>4</b>	<b>19</b>	<b>15</b>	<b>4</b>	<b>19</b>																					
	<b>TOTAL</b>	<b>727</b>	<b>1154</b>	<b>1881</b>	<b>1174</b>	<b>1398</b>	<b>2572</b>	<b>1901</b>	<b>2552</b>	<b>4453</b>	<b>302</b>	<b>743</b>	<b>1045</b>	<b>542</b>	<b>704</b>	<b>1246</b>	<b>884</b>	<b>1447</b>	<b>2291</b>	<b>170</b>	<b>419</b>	<b>589</b>	<b>195</b>	<b>538</b>	<b>733</b>	<b>365</b>	<b>957</b>	<b>1322</b>			

NOTE: In 2005 E.C, there are 66 active extension students of Level-II accounting students (21 Male and 45 Female)

### 2.1.4.2. Total Number of Current Students

Year of Entry	Male	Female	Total
2005	616	1315	1931
2004	889	1352	2241
2003	739	1263	2002
2002	569	771	1340
2001	273	281	554
2000	30	15	45
1999	15	4	19
<b>Grand Total</b>	<b>3131</b>	<b>5001</b>	<b>8132</b>

### 2.1.4.3. Active Number of Students by Training Program and Year of Entry

Year of Entry	Training Program		Total
	Degree	TVET	
2005	1218	713	1931
2004	1136	1105	2241
2003	983	1019	2002
2002	761	579	1340
2001	291	263	554
2000	45		45
1999	19		19
<b>Total</b>	<b>4453</b>	<b>3679</b>	<b>8132</b>

### 2.1.5. Free Scholarship Students: Regular and Extension

Year	Department	Degree			10+3 (Diploma)			10+2 (Certificate)			10+1 (Certificate)			Grand Total		
		M	F	T	M	F	T	M	F	T	M	F	T	M	F	T
1997	Accounting	3		3		2	2					2	2	3	4	7
	Computer Science (IT)				5		5	1	2	3		4	4	6	6	12
	Law	2		2	6		6							8		8
	Management		1	1											1	1
	Marketing Management				1	2	3							1	2	3
	SSOM					2	2		1	1		2	2		5	5
	Languages				2	2	4							2	2	4
	Social Science					2	2								2	2
	Natural Science															
	Mathematics															
Teacher Education											1	1	2	1	1	2
<b>Sub Total</b>		<b>5</b>	<b>1</b>	<b>6</b>	<b>14</b>	<b>10</b>	<b>24</b>	<b>1</b>	<b>3</b>	<b>4</b>	<b>1</b>	<b>9</b>	<b>10</b>	<b>21</b>	<b>23</b>	<b>44</b>
1998	Accounting				1	4	5							1	4	5
	Computer Science (IT)		1	1	3		3		1	1				3	2	5
	Law	4		4	6	1	7							10	1	11
	Management															
	Marketing Management	1	1	2	3		3							4	1	5
	SSOM					6	6								6	6
	Languages				4	1	5							4	1	5
	Social Science															
	Natural Science				2		2							2	0	2
	Mathematics															
Teacher Education																

Year	Department	Degree			10+3 (Diploma)			10+2 (Certificate)			10+1 (Certificate)			Grand Total		
		M	F	T	M	F	T	M	F	T	M	F	T	M	F	T
<b>Sub Total</b>		<b>5</b>	<b>2</b>	<b>7</b>	<b>19</b>	<b>12</b>	<b>31</b>		<b>1</b>	<b>1</b>	<b>1</b>			<b>24</b>	<b>15</b>	<b>39</b>
1999	Accounting	3		3	7		7	1	1	2				11	1	12
	Computer Science (IT)		1	1	2	1	3							2	2	4
	Law	1	1	2	5	1	6							6	2	8
	Management															
	Marketing Management		2	2	1		1							1	2	3
	SSOM					3	3		3	3					6	6
	Languages				2	1	3							2	1	3
	Social Science				2		2							2		2
	Mathematics															
	Teacher Education															
<b>Sub Total</b>		<b>4</b>	<b>4</b>	<b>8</b>	<b>19</b>	<b>6</b>	<b>25</b>	<b>1</b>	<b>4</b>	<b>5</b>				<b>24</b>	<b>14</b>	<b>38</b>
2000	Accounting	1		1	3	4	7	1	1	2				5	5	10
	Computer Science (IT)	1		1	6	1	7							7	1	8
	Law	1		1	3		3							4		4
	Management															
	Marketing Management				3	1	4							3	1	4
	SSOM					4	4		1	1					5	5
	Languages															
	Teacher Education															
<b>Sub Total</b>		<b>3</b>		<b>3</b>	<b>15</b>	<b>10</b>	<b>25</b>	<b>1</b>	<b>2</b>	<b>3</b>				<b>19</b>	<b>12</b>	<b>31</b>
2001	Accounting		2	2	9	1	10							9	3	
	Computer Science (IT)	2	1	3	4	1	5							6	2	
	Law				9	1	10							9	1	
	Management	1	1	2										1	1	
	Marketing Management				1	1	2							1	1	
	SSOM					4	4								4	
	Languages				1	1	2							1	1	
	Teacher Education															
<b>Sub Total</b>		<b>3</b>	<b>4</b>	<b>7</b>	<b>24</b>	<b>9</b>	<b>33</b>							<b>27</b>	<b>13</b>	<b>40</b>
2002	Accounting	1		1	11	3	14	1	1	2				13	4	17
	Computer Science (IT)	4		4	3		3							7	0	7
	Law	3		3	1		1							4		4
	Management															
	Marketing Management		1	1	3	1	4							3	2	5
	SSOM					3	3								3	3
	Languages				1	1	2							1	1	2
	Teacher Education				1	2	3							1	2	3
<b>Sub Total</b>		<b>8</b>	<b>1</b>	<b>9</b>	<b>20</b>	<b>10</b>	<b>30</b>	<b>1</b>	<b>1</b>	<b>2</b>				<b>29</b>	<b>12</b>	<b>41</b>
2003	Accounting		8	8	1	3	4							1	11	12
	Computer Science (IT)				2		2							2	0	2
	Law													0	0	0
	Management	1	0	1										1	0	1
	Marketing Management	1	2	3										1	2	3
	SSOM													0	0	0
	Languages													0	0	0
	Teacher Education													0	0	0
<b>Sub Total</b>		<b>2</b>	<b>10</b>	<b>12</b>	<b>3</b>	<b>3</b>	<b>6</b>							<b>5</b>	<b>13</b>	<b>18</b>

Year	Department	Degree			10+3 (Diploma)			10+2 (Certificate)			10+1 (Certificate)			Grand Total		
		M	F	T	M	F	T	M	F	T	M	F	T	M	F	T
2004	Accounting	1	7	8	1	3	4							2	10	12
	Computer Science (IT)	1	0	1	2	0	2							3	0	3
	Law															
	Management	2	0	2										2	0	2
	Marketing Management	1	2	3										1	2	3
	SSOM															
	Languages															
	Teacher Education															
<b>Sub Total</b>		<b>5</b>	<b>9</b>	<b>14</b>	<b>3</b>	<b>3</b>	<b>6</b>	<b>0</b>	<b>0</b>	<b>0</b>	<b>0</b>	<b>0</b>	<b>0</b>	<b>8</b>	<b>12</b>	<b>20</b>
<b>2005</b>	<b>Sub Total</b>	<b>9</b>	<b>3</b>	<b>12</b>	<b>2</b>	<b>5</b>	<b>7</b>							<b>11</b>	<b>8</b>	<b>19</b>
<b>Total</b>		<b>44</b>	<b>34</b>	<b>78</b>	<b>119</b>	<b>68</b>	<b>187</b>	<b>4</b>	<b>11</b>	<b>15</b>	<b>1</b>	<b>9</b>	<b>10</b>	<b>168</b>	<b>122</b>	<b>290</b>

## 2.2. Distance Mode of Learning

### 2.2.1. Total Enrollment 1992 – 2005EC

Year of Entry	Program	Sex(Entry - A)			Sex(Entry - B)			Sex(Entry - C)			Grand Total		
		M	F	T	M	F	T	M	F	T	M	F	T
1992	Dip.(12+2)	45	5	50	2		2				47	5	52
	<b>Sub Total</b>	<b>45</b>	<b>5</b>	<b>50</b>	<b>2</b>		<b>2</b>				<b>47</b>	<b>5</b>	<b>52</b>
1993	Dip.(12+2)	3	1	4	30	7	37				33	8	41
	<b>Sub Total</b>	<b>3</b>	<b>1</b>	<b>4</b>	<b>30</b>	<b>7</b>	<b>37</b>				<b>33</b>	<b>8</b>	<b>41</b>
1994	Dip.(12+2)	1410	140	1550	1201	126	1327				2611	266	2877
	<b>Sub Total</b>	<b>1410</b>	<b>140</b>	<b>1550</b>	<b>1201</b>	<b>126</b>	<b>1327</b>				<b>2611</b>	<b>266</b>	<b>2877</b>
1995	Dip.(12+2)	4874	750	5624	1720	291	2011				6594	1041	7635
	Degree	182	8	190	137	18	155				319	26	345
	<b>Sub Total</b>	<b>5056</b>	<b>758</b>	<b>5814</b>	<b>1857</b>	<b>309</b>	<b>2166</b>				<b>6913</b>	<b>1067</b>	<b>7980</b>
1996	Certif.(10+1)	175	58	233	57	24	81				232	82	314
	Certif.(10+2)	36	21	57	33	28	61				69	49	118
	Dip.(10+3)	3718	851	4569	1830	512	2342				5548	1363	6911
	Degree	268	29	297	145	18	163				413	47	460
	<b>Sub Total</b>	<b>4197</b>	<b>959</b>	<b>5156</b>	<b>2065</b>	<b>582</b>	<b>2647</b>				<b>6262</b>	<b>1541</b>	<b>7803</b>
1997	Certif.(10+1)	224	140	364	59	36	95				283	176	459
	Certif.(10+2)	239	201	440	61	64	125				300	265	565
	Dip.(10+3)	4929	1820	6749	1533	477	2010				6462	2297	8759
	Degree	610	110	720	389	78	467				999	188	1187
	<b>Sub Total</b>	<b>6002</b>	<b>2271</b>	<b>8273</b>	<b>2042</b>	<b>655</b>	<b>2697</b>				<b>8044</b>	<b>2926</b>	<b>10970</b>
1998	Certif.(10+1)	119	56	175	24	16	40				143	72	215
	Certif.(10+2)	149	94	243	43	36	79				192	130	322
	Dip.(10+3)	5693	2554	8247	2652	1228	3880				8345	3782	12127
	Degree	1836	245	2081	1080	133	1213				2916	378	3294
	<b>Sub Total</b>	<b>7797</b>	<b>2949</b>	<b>10746</b>	<b>3799</b>	<b>1413</b>	<b>5212</b>				<b>11596</b>	<b>4362</b>	<b>15958</b>
1999	Certif.(10+1)	113	57	170	52	25	77	42	15	57	207	97	304
	Certif.(10+2)	186	164	350	69	63	132	85	50	135	340	277	617
	Dip.(10+3)	4693	2709	7402	1003	545	1548	618	197	815	6314	3451	9765
	Degree	3275	485	3760	836	143	979	880	145	1025	4991	773	5764
	<b>Sub Total</b>	<b>8267</b>	<b>3415</b>	<b>11682</b>	<b>1960</b>	<b>776</b>	<b>2736</b>	<b>1625</b>	<b>407</b>	<b>2032</b>	<b>11852</b>	<b>4598</b>	<b>16450</b>
2000	Certif.(10+1)	220	86	306	69	25	94	57	21	78	346	132	478
	Certif.(10+2)	282	204	486	103	73	176	161	97	258	546	374	920
	Dip.(10+3)	1388	524	1912	561	196	757	740	295	1035	2689	1015	3704
	Degree	1348	374	1722	620	145	765	1268	277	1545	3236	796	4032
	<b>Sub Total</b>	<b>3238</b>	<b>1188</b>	<b>4426</b>	<b>1353</b>	<b>439</b>	<b>1792</b>	<b>2226</b>	<b>690</b>	<b>2916</b>	<b>6817</b>	<b>2317</b>	<b>9134</b>
2001	Certif.(10+1)	5	2	7		1	1			0	5	3	8
	Certif.(10+2)	766	457	1223	159	90	249	193	154	347	1118	701	1819
	Dip.(10+3)	1762	709	2471	367	151	518	350	155	505	2479	1015	3494
	Degree	1729	390	2119	591	102	693	564	132	696	2884	624	3508

Year of Entry	Program	Sex(Entry - A)			Sex(Entry - B)			Sex(Entry - C)			Grand Total		
		M	F	T	M	F	T	M	F	T	M	F	T
	<b>Sub Total</b>	<b>4262</b>	<b>1558</b>	<b>5820</b>	<b>1117</b>	<b>344</b>	<b>1461</b>	<b>1107</b>	<b>441</b>	<b>1548</b>	<b>6486</b>	<b>2343</b>	<b>8829</b>
2002	Teaching	138	89	227	101	50	151	676	242	918	915	381	1296
	Certif.(Level III)	414	240	654	138	80	218	632	350	982	1184	670	1854
	Dip.(Level IV)	1542	806	2348	573	299	872	2174	1105	3279	4289	2210	6499
	Degree	2134	534	2668	1196	265	1461	5178	1350	6528	8508	2149	10657
	<b>Sub Total</b>	<b>4228</b>	<b>1669</b>	<b>5897</b>	<b>2008</b>	<b>694</b>	<b>2702</b>	<b>8660</b>	<b>3047</b>	<b>11707</b>	<b>14896</b>	<b>5410</b>	<b>20306*</b>
2004	Teaching			0							0	0	0
	Certif.(Level III)	12	7	19							12	7	19
	Dip.(Level IV)			0							0	0	0
	Degree	2801	624	3425							2801	624	3425
	<b>Sub Total</b>	<b>2813</b>	<b>631</b>	<b>3444</b>	<b>0</b>	<b>0</b>	<b>0</b>	<b>0</b>	<b>0</b>	<b>0</b>	<b>2813</b>	<b>631</b>	<b>3444</b>
2005	<b>Teaching</b>												
	<b>Certif.(Level III)</b>	<b>13</b>	<b>20</b>	<b>33</b>							<b>13</b>	<b>20</b>	<b>33</b>
	<b>Dip. (Level IV)</b>	<b>3</b>	<b>1</b>	<b>4</b>							<b>3</b>	<b>1</b>	<b>4</b>
	<b>Degree</b>	<b>1289</b>	<b>378</b>	<b>1667</b>	<b>590</b>	<b>144</b>	<b>734</b>	<b>9</b>	<b>3</b>	<b>12</b>	<b>1888</b>	<b>525</b>	<b>2413</b>
	<b>Sub Total</b>	<b>1305</b>	<b>399</b>	<b>1704</b>	<b>590</b>	<b>144</b>	<b>734</b>	<b>9</b>	<b>3</b>	<b>12</b>	<b>1904</b>	<b>546</b>	<b>2450</b>
Total	Teaching	138	89	227	101	50	151	676	242	918	915	381	1296
	Certif.(10+1)	856	399	1255	261	127	388	99	36	135	1216	562	1778
	Certif.(10+2/Level III)	2097	1408	3505	606	434	1040	1071	651	1722	3761+13	2493	6267
	Dip.(10+3/Level IV)	23728	9974	33702	8519	3408	11927	3882	1752	5634	36126+3	15134	51263
	Dip.(12+2)	6332	896	7228	2953	424	3377	0	0	0	9285	1320	10605
	Degree	15472	3177	18649	5584	1046	6639	7899	1907	9806	28995	6130	35085
	<b>Grand Total</b>	<b>48623</b>	<b>15943</b>	<b>64566</b>	<b>18024</b>	<b>5489</b>	<b>23513</b>	<b>13627</b>	<b>4588</b>	<b>18215</b>	<b>80274</b>	<b>26020</b>	<b>106294</b>

\* The total number of students enrolled in 2002 is higher than the printed version of BOSS 2010. The difference is due to the number of registered students whose documents must have been confirmed before reporting.

**NOTE:** In 2003, no students are enrolled because of government regulations; and the two of the 2004 terms (2<sup>nd</sup> and 3<sup>rd</sup>) are currently available.

### 2.2.2 Currently Active Number of Distance Students

Year of Entry	Program	Sex(Entry - A)			Sex(Entry - B)			Sex(Entry - C)			Grand Total		
		M	F	T	M	F	T	M	F	T	M	F	T
2001	Teaching				30	25	55	46	31	77	76	56	132
	Certif. (10+2/Level III)				163	75	238	171	131	302	334	206	540
	Dip.(10+3/Level IV)				368	127	495	332	126	458	700	253	953
	Degree				689	135	824	668	160	828	1357	295	1652
	<b>Sub Total</b>	<b>0</b>	<b>0</b>	<b>0</b>	<b>1250</b>	<b>362</b>	<b>1612</b>	<b>1217</b>	<b>448</b>	<b>1665</b>	<b>2467</b>	<b>810</b>	<b>3277</b>
2002	Teaching	138	89	227	101	50	151	676	242	918	915	381	1296
	Certif.(10+2/Level III)	414	240	654	138	80	218	632	350	982	1184	670	1854
	Dip.(10+3/Level IV)	1542	806	2348	573	299	872	2172	1105	3277	4287	2210	6497
	Degree	2135	534	2669	1196	265	1461	5178	1350	6528	8509	2149	10658

Year of Entry	Program	Sex(Entry - A)			Sex(Entry - B)			Sex(Entry - C)			Grand Total		
		M	F	T	M	F	T	M	F	T	M	F	T
	<b>Sub Total</b>	<b>4229</b>	<b>1669</b>	<b>5898</b>	<b>2008</b>	<b>694</b>	<b>2702</b>	<b>8658</b>	<b>3047</b>	<b>11705</b>	<b>14895</b>	<b>5410</b>	<b>20305</b>
2004	Certif.(Level III)	12	7	19							12	7	19
	Dip.(Level IV)	5	4	9							5	4	9
	Degree	2844	631	3475							2844	631	3475
	<b>Sub Total</b>	<b>2861</b>	<b>642</b>	<b>3503</b>	<b>0</b>	<b>0</b>	<b>0</b>	<b>0</b>	<b>0</b>	<b>0</b>	<b>2861</b>	<b>642</b>	<b>3503</b>
2005	Degree	1289	378	1667	590	144	734	9	3	11	1888	525	2413
	Level III	13	20	33	0	0	0	0	0	0	13	20	33
	Level IV	3	1	4	0	0	0	0	0	0	3	1	4
	<b>Sub Total</b>	<b>1305</b>	<b>399</b>	<b>1704</b>	<b>590</b>	<b>144</b>	<b>734</b>	<b>9</b>	<b>3</b>	<b>11</b>	<b>1904</b>	<b>546</b>	<b>2450</b>
Total	Teaching	138	89	227	131	75	206	722	273	995	991	437	1428
	Certif.(10+2/Level III)	439	267	706	301	155	456	803	481	1284	1543	903	2446
	Dip.(10+3/Level IV)	1550	811	2361	941	426	1367	2504	1231	3735	4995	2468	7463
	Degree	6268	1543	7811	2475	544	3019	5855	1513	7367	14598	3600	18198
	<b>Grand Total</b>	<b>8395</b>	<b>2710</b>	<b>11105</b>	<b>3848</b>	<b>1200</b>	<b>5048</b>	<b>9884</b>	<b>3498</b>	<b>13381</b>	<b>22127</b>	<b>7408</b>	<b>29535</b>

**Note:** The total number of currently active students in the above table excluded students registered for the second and third terms of entry because the data for it is incomplete. Therefore, the total currently active number of students is higher than 27,085.

### 2.2.3. Active Students by Department

Department	Degree			Level III			Level IV			Total		
	M	F	T	M	F	T	M	F	T	M	F	T
Accounting	431	201	632	27	68	95	25	9	34	483	278	761
Agribusiness Management	169	35	204							169	35	204
Agricultural Economics	944	132	1076							944	132	1076
Amharic	0	0	0	0	0	0	0	0	0	0	0	0
Cooperatives (Accounting and Auditing)	259	39	298							259	39	298
Cooperatives (Business Management)	226	54	280							226	54	280
Educational Planning & Management	416	120	536							416	120	536
Educational Planning and Management	998	316	1314							998	316	1314
English	0	0	0	0	0	0	0	0	0	0	0	0
Finance and Development Economics	119	21	130							119	11	130
Geography	0	0	0	0	0	0	0	0	0	0	0	0
History	0	0	0	0	0	0	0	0	0	0	0	0
Human Resource Management				27	19	46				27	19	46
Law	0	0	0	0	0	0	0	0	0	0	0	0
Management	577	200	777							577	200	777
Marketing Management	55	36	91							55	36	91
Marketing/Salesmanship							2	0	2	2	0	2
Mathematics	0	0	0	0	0	0	0	0	0	0	0	0
Purchasing & Supplies Management							1	0	1	1	0	1



Department	Degree			Level III			Level IV			Total		
	M	F	T	M	F	T	M	F	T	M	F	T
Rural Development	161	34	195							161	34	195
Rural Development & Agricultural Extension	255	45	300							255	45	300
<b>Total</b>	<b>4610</b>	<b>1223</b>	<b>5833</b>	<b>54</b>	<b>87</b>	<b>141</b>	<b>28</b>	<b>9</b>	<b>37</b>	<b>4692</b>	<b>1319</b>	<b>6011</b>

#### 2.2.4. Number of Currently Active Degree Program Students by Department

Department	Degree										Grand total		
	04B		04C		05A		05B		05C				
	M	F	M	F	M	F	M	F	M	F	M	F	Total
Accounting	69	40	114	44	169	92	78	25	1	0	431	201	632
Agribusiness Management	54	16	58	7	39	9	18	2	0	1	169	35	204
Agricultural Economics	341	60	294	29	220	25	87	18	2	0	944	132	1076
Amharic			0	0							0	0	0
Cooperatives (Accounting and Auditing)	75	14	78	11	75	12	30	2	1	0	259	39	298
Cooperatives (Business Management)	73	7	72	26	57	16	23	5	1	0	226	54	280
Educational Planning & Management	6	2	280	78	84	26	46	14	0	0	416	120	536
Educational Planning and Management	11	2	551	208	271	70	164	36	1	0	998	316	1314
English			0	0							0	0	0
Finance and Development Economics	35		23	3	44	6	17	2	0	0	119	11	130
Geography			0	0							0	0	0
History			0	0							0	0	0
Law			0	0							0	0	0
Management	119	41	162	47	194	85	101	27	1	0	577	200	777
Marketing Management	11	3	17	11	18	15	7	6	2	1	55	36	91
Mathematics			0	0							0	0	0
Rural Development	36	10	63	10	43	7	19	7	0	0	161	34	195
Rural Development & Agricultural Extension	117	19	63	11	75	15	0	0	0	0	255	45	300
<b>Total</b>	<b>947</b>	<b>214</b>	<b>1775</b>	<b>485</b>	<b>1289</b>	<b>378</b>	<b>590</b>	<b>144</b>	<b>9</b>	<b>2</b>	<b>4610</b>	<b>1223</b>	<b>5833</b>

**2.2.5. Current Number of Level IV and 10+3 Students by Department**

<i>Department</i>	<i>Level IV</i>										<i>grand Total</i>		
	<i>04B</i>		<i>04C</i>		<i>05A</i>		<i>05B</i>		<i>05C</i>				
	<i>M</i>	<i>F</i>	<i>M</i>	<i>F</i>	<i>M</i>	<i>F</i>	<i>M</i>	<i>F</i>	<i>M</i>	<i>F</i>	<i>M</i>	<i>F</i>	<i>Total</i>
<i>Accounting</i>	14	2	9	6	2	1	0	0	0	0	25	9	34
<i>Law</i>											0	0	0
<i>Marketing/Salesmanship</i>			1		1	0	0	0	0	0	2	0	2
<i>Purchasing &amp; Supplies mgt</i>			1								1	0	1
<b>Total</b>	14	2	11	6	3	1	0	0	0	0	28	9	37

**2.2.6. Current Number of Level III Students by Department**

<i>Department</i>	<i>Level III</i>										<i>Grand total</i>		
	<i>04B</i>		<i>04C</i>		<i>05A</i>		<i>05B</i>		<i>05C</i>				
	<i>M</i>	<i>F</i>	<i>M</i>	<i>F</i>	<i>M</i>	<i>F</i>	<i>M</i>	<i>F</i>	<i>M</i>	<i>F</i>	<i>M</i>	<i>F</i>	<i>Total</i>
Accounting		12	18	45	9	11	0	0	0	0	27	68	95
Human Resource Management	10	4	13	6	4	9	0	0	0	0	27	19	46
Total	10	16	31	51	13	20	0	0	0	0	54	87	141

**2.2.8. Active Students by Center, Program and Year of Entry**

NO	Center Name	Program	04B		04C		05A		05B		05C		Total	
			M	F	M	F	M	F	M	F	M	F	M	F
1	Abiyi Adi	Degree	3	0	12	0	9	3	0	0	0	0	24	3
		Level III	0	0	0	0	0	0	0	0	0	0	0	0
		Level IV	0	0	0	0	0	0	0	0	0	0	0	0
2	Abomssa	Degree	0	0	15	1	2	0	0	1	0	0	17	2
		Level III	0	0	0	0	0	0	0	0	0	0	0	0
		Level IV	0	0	0	0	0	0	0	0	0	0	0	0
3	Adaba	Degree	0	0	2	0	6	0	0	1	0	0	8	1
		Level III	0	0	0	0	0	0	0	0	0	0	0	0
		Level IV	0	0	0	0	0	0	0	0	0	0	0	0
4	Adama	Degree	7	1	10	10	11	6	4	2	0	0	32	19
		Level III	0	0	0	0	0	0	0	0	0	0	0	0
		Level IV	0	0	0	0	0	0	0	0	0	0	0	0
5	Addis Ababa	Degree	88	30	58	38	85	70	61	26	6	2	298	166
		Level III	0	0	0	0	0	0	0	0	0	0	0	0
		Level IV	0	0	0	0	0	0	0	0	0	0	0	0
6	Adigrat	Degree	0	0	1	0	2	0	0	0	0	0	3	0
		Level III	0	0	0	0	0	0	0	0	0	0	0	0
		Level IV	0	0	0	0	0	0	0	0	0	0	0	0
7	Adio	Degree	0	0	0	0	0	0	0	0	0	0	0	0
		Level III	0	0	0	0	0	0	0	0	0	0	0	0
		Level IV	0	0	0	0	0	0	0	0	0	0	0	0
8	Adolla	Degree	5	0	14	1	7	0	0	0	0	0	26	1
		Level III	0	0	0	0	0	0	0	0	0	0	0	0
		Level IV	0	0	0	0	0	0	0	0	0	0	0	0
9	Ajibar-Tenta	Degree	4	0	5	2	2	0	3	0	0	0	14	2
		Level III	0	0	0	0	0	0	0	0	0	0	0	0
		Level IV	0	0	0	0	0	0	0	0	0	0	0	0
10	Akesta	Degree	5	0	7	0	3	0	1	0	0	0	16	0
		Level III	0	0	0	0	0	0	0	0	0	0	0	0
		Level IV	0	0	0	0	0	0	0	0	0	0	0	0
11	Alaba	Degree	1	0	19	4	4	1	1	0	0	0	25	5
		Level III	0	0	0	0	0	0	0	0	0	0	0	0
		Level IV	0	0	0	0	0	0	0	0	0	0	0	0
12	Alem Ketema	Degree	6	1	15	2	4	1	3	1	0	0	28	5
		Level III	0	0	0	0	0	0	0	0	0	0	0	0
		Level IV	0	0	0	0	0	0	0	0	0	0	0	0
13	Aleta Wondo	Degree	7	1	13	1	6	1	11	0	0	0	37	3
		Level III	0	0	0	0	0	0	0	0	0	0	0	0
		Level IV	0	0	0	0	0	0	0	0	0	0	0	0

NO	Center Name	Program	04B		04C		05A		05B		05C		Total	
			M	F	M	F	M	F	M	F	M	F	M	F
14	Alge	Degree	0	0	0	0	0	0	0	0	0	0	0	0
		Level III	0	0	0	0	0	0	0	0	0	0	0	0
		Level IV	0	0	0	0	0	0	0	0	0	0	0	0
15	Amaro Kele	Degree	5	0	10	0	3	0	3	0	0	0	21	0
		Level III	0	0	0	0	0	0	0	0	0	0	0	0
		Level IV	0	0	0	0	0	0	0	0	0	0	0	0
16	Ambo	Degree	5	0	16	5	15	3	7	0	0	0	43	8
		Level III	0	0	0	0	0	0	0	0	0	0	0	0
		Level IV	0	0	0	0	0	0	0	0	0	0	0	0
17	Arba Minch	Degree	30	5	46	11	27	4	8	1	0	0	111	21
		Level III	0	0	0	0	0	0	0	0	0	0	0	0
		Level IV	0	0	0	0	0	0	0	0	0	0	0	0
18	Arbaya	Degree	7	1	3	3	2	2	0	0	0	0	12	6
		Level III	0	0	0	0	0	0	0	0	0	0	0	0
		Level IV	0	0	0	0	0	0	0	0	0	0	0	0
19	Arjjo	Degree	0	0	0	0	0	0	0	0	0	0	0	0
		Level III	0	0	0	0	0	0	0	0	0	0	0	0
		Level IV	0	0	0	0	0	0	0	0	0	0	0	0
20	Arsi Robe	Degree	3	1	8	1	5	2	0	0	0	0	16	4
		Level III	0	0	0	0	0	0	0	0	0	0	0	0
		Level IV	0	0	0	0	0	0	0	0	0	0	0	0
21	Assassa	Degree	0	0	0	0	0	0	0	0	0	0	0	0
		Level III	0	0	0	0	0	0	0	0	0	0	0	0
		Level IV	0	0	0	0	0	0	0	0	0	0	0	0
22	Assela	Degree	5	0	12	5	9	5	6	0	0	0	32	10
		Level III	0	0	0	0	0	0	0	0	0	0	0	0
		Level IV	0	0	0	0	0	0	0	0	0	0	0	0
23	Assossa	Degree	40	23	24	6	16	8	6	2	1	0	87	39
		Level III	1	1	2	3	0	1	0	0	0	0	3	5
		Level IV	7	0	2	0	0	0	0	0	0	0	9	0
24	Atnago	Degree	0	0	0	0	0	0	0	0	0	0	0	0
		Level III	0	0	0	0	0	0	0	0	0	0	0	0
		Level IV	0	0	0	0	0	0	0	0	0	0	0	0
25	Awassa	Degree	11	1	13	4	13	3	5	3	0	1	42	12
		Level III	0	0	0	0	0	0	0	0	0	0	0	0
		Level IV	0	0	0	0	0	0	0	0	0	0	0	0
26	Axum	Degree	0	0	19	2	0	1	0	0	0	0	19	3
		Level III	0	0	0	0	0	0	0	0	0	0	0	0
		Level IV	0	0	0	0	0	0	0	0	0	0	0	0
27	Ayra	Degree	4	0	5	1	5	0	0	0	0	14	1	

NO	Center Name	Program	04B		04C		05A		05B		05C		Total	
			M	F	M	F	M	F	M	F	M	F	M	F
		Level III	0	0	0	0	0	0	0	0	0	0	0	0
		Level IV	0	0	0	0	0	0	0	0	0	0	0	0
		Degree	39	11	25	4	19	10	6	2	0	0	89	27
28	Bahir Dar	Level III	0	0	0	0	0	0	0	0	0	0	0	0
		Level IV	0	0	0	0	0	0	0	0	0	0	0	0
29	Bako	Degree	0	0	0	0	0	0	0	0	0	0	0	0
		Level III	0	0	0	0	0	0	0	0	0	0	0	0
		Level IV	0	0	0	0	0	0	0	0	0	0	0	0
30	Bale Robe	Degree	11	0	14	4	9	3	5	0	0	0	39	7
		Level III	0	0	0	0	0	0	0	0	0	0	0	0
		Level IV	0	0	0	0	0	0	0	0	0	0	0	0
31	Batu	Degree	0	0	2	0	2	0	0	0	0	0	4	0
		Level III	0	0	0	0	0	0	0	0	0	0	0	0
		Level IV	0	0	0	0	0	0	0	0	0	0	0	0
32	Bedele	Degree	8	1	3	1	9	1	4	2	0	0	24	5
		Level III	0	0	0	0	0	0	0	0	0	0	0	0
		Level IV	0	0	0	0	0	0	0	0	0	0	0	0
33	Bedeno	Degree	17	5	27	9	0	0	0	0	0	0	44	14
		Level III	0	0	0	0	0	0	0	0	0	0	0	0
		Level IV	0	0	0	0	0	0	0	0	0	0	0	0
34	Begi	Degree	2	0	9	0	0	0	0	0	0	0	11	0
		Level III	0	0	0	0	0	0	0	0	0	0	0	0
		Level IV	0	0	0	0	0	0	0	0	0	0	0	0
35	Bekoji	Degree	1	0	0	0	4	1	0	0	0	0	5	1
		Level III	0	0	0	0	0	0	0	0	0	0	0	0
		Level IV	0	0	0	0	0	0	0	0	0	0	0	0
36	Bensa-daye	Degree	3	0	8	1	6	1	7	1	0	0	24	3
		Level III	0	0	0	0	0	0	0	0	0	0	0	0
		Level IV	0	0	0	0	0	0	0	0	0	0	0	0
37	Bichena	Degree	8	3	16	2	9	2	5	2	0	0	38	9
		Level III	0	0	0	0	0	0	0	0	0	0	0	0
		Level IV	0	0	0	0	0	0	0	0	0	0	0	0
38	Billa	Degree	0	0	0	0	0	0	1	0	0	0	1	0
		Level III	0	0	0	0	0	0	0	0	0	0	0	0
		Level IV	0	0	0	0	0	0	0	0	0	0	0	0
39	Billo	Degree	2	0	1	0	1	0	0	0	0	0	4	0
		Level III	0	0	0	0	0	0	0	0	0	0	0	0
		Level IV	0	0	0	0	0	0	0	0	0	0	0	0
40	Bonga	Degree	4	0	16	4	18	0	0	0	0	0	38	4
		Level III	0	0	0	0	0	0	0	0	0	0	0	0

NO	Center Name	Program	04B		04C		05A		05B		05C		Total	
			M	F	M	F	M	F	M	F	M	F	M	F
		Level IV	0	0	0	0	0	0	0	0	0	0	0	0
41	Bore	Degree	1	0	0	0	10	3	0	0	0	0	11	3
		Level III	0	0	0	0	0	0	0	0	0	0	0	0
		Level IV	0	0	0	0	0	0	0	0	0	0	0	0
42	Bulen	Degree	0	1	2	0	9	9	1	1	0	0	12	11
		Level III	9	14	5	5	2	3	0	0	0	0	16	22
		Level IV	6	2	1	0	0	1	0	0	0	0	7	3
43	Bulle Hora	Degree	1	0	17	0	7	0	8	0	0	0	33	0
		Level III	0	0	0	0	0	0	0	0	0	0	0	0
		Level IV	0	0	0	0	0	0	0	0	0	0	0	0
44	Bure	Degree	0	0	0	0	0	0	0	0	0	0	0	0
		Level III	0	0	0	0	0	0	0	0	0	0	0	0
		Level IV	0	0	0	0	0	0	0	0	0	0	0	0
45	Burji	Degree	2	0	0	1	1	0	0	0	0	0	3	1
		Level III	0	0	0	0	0	0	0	0	0	0	0	0
		Level IV	0	0	0	0	0	0	0	0	0	0	0	0
46	Butajira	Degree	5	0	7	2	9	7	10	2	0	0	31	11
		Level III	0	0	0	0	0	0	0	0	0	0	0	0
		Level IV	0	0	0	0	0	0	0	0	0	0	0	0
47	Chagni	Degree	36	13	26	4	17	13	4	2	0	0	83	32
		Level III	0	0	0	0	0	0	0	0	0	0	0	0
		Level IV	0	0	0	0	0	0	0	0	0	0	0	0
48	Chelenko	Degree	0	0	0	0	0	0	0	0	0	0	0	0
		Level III	0	0	0	0	0	0	0	0	0	0	0	0
		Level IV	0	0	0	0	0	0	0	0	0	0	0	0
49	Chena	Degree	0	0	0	0	0	0	0	0	0	0	0	0
		Level III	0	0	0	0	0	0	0	0	0	0	0	0
		Level IV	0	0	0	0	0	0	0	0	0	0	0	0
50	Chencha	Degree	0	0	0	0	0	0	0	0	0	0	0	0
		Level III	0	0	0	0	0	0	0	0	0	0	0	0
		Level IV	0	0	0	0	0	0	0	0	0	0	0	0
51	Chilga	Degree	1	1	1	0	1	1	1	3	0	0	4	5
		Level III	0	0	0	0	0	0	0	0	0	0	0	0
		Level IV	0	0	0	0	0	0	0	0	0	0	0	0
52	Chiro	Degree	2	1	22	2	5	1	0	0	0	0	29	4
		Level III	0	0	0	0	0	0	0	0	0	0	0	0
		Level IV	0	0	0	0	0	0	0	0	0	0	0	0
53	Chole	Degree	4	2	7	1	0	0	0	0	0	0	11	3
		Level III	0	0	0	0	0	0	0	0	0	0	0	0
		Level IV	0	0	0	0	0	0	0	0	0	0	0	0

NO	Center Name	Program	04B		04C		05A		05B		05C		Total	
			M	F	M	F	M	F	M	F	M	F	M	F
54	Dangla	Degree	25	9	39	9	17	6	12	1	0	0	93	25
		Level III	0	0	0	0	0	0	0	0	0	0	0	0
		Level IV	0	0	0	0	0	0	0	0	0	0	0	0
55	Dawnt	Degree	1	0	1	1	8	0	0	0	0	0	10	1
		Level III	0	0	0	0	0	0	0	0	0	0	0	0
		Level IV	0	0	0	0	0	0	0	0	0	0	0	0
56	Debark	Degree	15	7	5	2	10	1	3	0	0	0	33	10
		Level III	0	0	0	0	0	0	0	0	0	0	0	0
		Level IV	0	0	0	0	0	0	0	0	0	0	0	0
57	Debre Birhan	Degree	26	3	33	6	33	2	13	1	0	0	105	12
		Level III	0	0	0	0	0	0	0	0	0	0	0	0
		Level IV	0	0	0	0	0	0	0	0	0	0	0	0
58	Debre Markos	Degree	32	3	45	11	25	9	23	9	0	0	125	32
		Level III	0	0	0	0	0	0	0	0	0	0	0	0
		Level IV	0	0	0	0	0	0	0	0	0	0	0	0
59	Debre Tabor	Degree	11	1	14	1	5	0	0	1	0	0	30	3
		Level III	0	0	0	0	0	0	0	0	0	0	0	0
		Level IV	0	0	0	0	0	0	0	0	0	0	0	0
60	Dego Tsion	Degree	11	1	3	2	16	2	14	1	0	0	44	6
		Level III	0	0	0	0	0	0	0	0	0	0	0	0
		Level IV	0	0	0	0	0	0	0	0	0	0	0	0
61	Delgi	Degree	0	0	0	0	0	0	0	0	0	0	0	0
		Level III	0	0	0	0	0	0	0	0	0	0	0	0
		Level IV	0	0	0	0	0	0	0	0	0	0	0	0
62	Dello Menna	Degree	0	0	4	0	0	0	0	0	0	0	4	0
		Level III	0	0	0	0	0	0	0	0	0	0	0	0
		Level IV	0	0	0	0	0	0	0	0	0	0	0	0
63	Dembi Dollo	Degree	6	2	6	1	7	1	2	0	0	0	21	4
		Level III	0	0	0	0	0	0	0	0	0	0	0	0
		Level IV	0	0	0	0	0	0	0	0	0	0	0	0
64	Dera	Degree	1	1	7	7	7	0	5	0	0	0	20	8
		Level III	0	0	0	0	0	0	0	0	0	0	0	0
		Level IV	0	0	0	0	0	0	0	0	0	0	0	0
65	Dessie	Degree	37	1	18	8	21	2	13	3	0	0	89	14
		Level III	0	0	0	0	0	0	0	0	0	0	0	0
		Level IV	0	0	0	0	0	0	0	0	0	0	0	0
66	Dilla	Degree	9	1	17	3	11	1	5	0	1	0	43	5
		Level III	0	0	0	0	0	0	0	0	0	0	0	0
		Level IV	0	0	0	0	0	0	0	0	0	0	0	0
67	Dire Dawa	Degree	11	5	9	0	14	5	9	3	0	0	43	13

NO	Center Name	Program	04B		04C		05A		05B		05C		Total	
			M	F	M	F	M	F	M	F	M	F	M	F
		Level III	0	0	0	0	0	0	0	0	0	0	0	0
		Level IV	0	0	0	0	0	0	0	0	0	0	0	0
68	Dodola	Degree	1	0	2	1	2	0	0	0	0	0	5	1
		Level III	0	0	0	0	0	0	0	0	0	0	0	0
		Level IV	0	0	0	0	0	0	0	0	0	0	0	0
69	Dubti	Degree	27	13	4	0	12	7	3	3	0	0	46	23
		Level III	0	0	0	0	0	0	0	0	0	0	0	0
		Level IV	0	0	0	0	0	0	0	0	0	0	0	0
70	Durame	Degree	7	1	29	4	14	2	4	0	0	0	54	7
		Level III	0	0	0	0	0	0	0	0	0	0	0	0
		Level IV	0	0	0	0	0	0	0	0	0	0	0	0
71	Ebnate	Degree	3	0	3	3	1	1	0	0	0	0	7	4
		Level III	0	0	0	0	0	0	0	0	0	0	0	0
		Level IV	0	0	0	0	0	0	0	0	0	0	0	0
72	Enewari	Degree	5	1	16	5	0	0	4	0	0	0	25	6
		Level III	0	0	0	0	0	0	0	0	0	0	0	0
		Level IV	0	0	0	0	0	0	0	0	0	0	0	0
73	Enticho	Degree	0	0	0	0	0	0	0	0	0	0	0	0
		Level III	0	0	0	0	0	0	0	0	0	0	0	0
		Level IV	0	0	0	0	0	0	0	0	0	0	0	0
74	Estie	Degree	24	4	15	6	11	4	6	0	0	0	56	14
		Level III	0	0	0	0	0	0	0	0	0	0	0	0
		Level IV	0	0	0	0	0	0	0	0	0	0	0	0
75	Fenote Selam	Degree	26	3	33	5	24	5	12	2	0	0	95	15
		Level III	0	0	0	0	0	0	0	0	0	0	0	0
		Level IV	0	0	0	0	0	0	0	0	0	0	0	0
76	Feres Bet	Degree	10	0	11	4	6	2	16	3	0	0	43	9
		Level III	0	0	0	0	0	0	0	0	0	0	0	0
		Level IV	0	0	0	0	0	0	0	0	0	0	0	0
77	Fiche	Degree	5	0	11	5	4	1	2	0	0	0	22	6
		Level III	0	0	0	0	0	0	0	0	0	0	0	0
		Level IV	0	0	0	0	0	0	0	0	0	0	0	0
78	Filakit	Degree	12	2	14	4	10	5	2	1	0	0	38	12
		Level III	0	0	0	0	0	0	0	0	0	0	0	0
		Level IV	0	0	0	0	0	0	0	0	0	0	0	0
79	Finchawo	Degree	0	0	0	0	0	0	0	0	0	0	0	0
		Level III	0	0	0	0	0	0	0	0	0	0	0	0
		Level IV	0	0	0	0	0	0	0	0	0	0	0	0
80	Gambella	Degree	8	1	15	3	4	1	4	3	0	0	31	8
		Level III	0	0	0	0	0	0	0	0	0	0	0	0



NO	Center Name	Program	04B		04C		05A		05B		05C		Total	
			M	F	M	F	M	F	M	F	M	F	M	F
		Level IV	0	0	0	0	0	0	0	0	0	0	0	0
81	Gedebe	Degree	0	0	0	0	2	0	8	0	0	0	10	0
		Level III	0	0	0	0	0	0	0	0	0	0	0	0
		Level IV	0	0	0	0	0	0	0	0	0	0	0	0
82	Gelemeso	Degree	0	0	11	4	0	1	0	0	0	0	11	5
		Level III	0	0	0	0	0	0	0	0	0	0	0	0
		Level IV	0	0	0	0	0	0	0	0	0	0	0	0
83	Gidame	Degree	10	0	0	0	1	1	1	2	0	0	12	3
		Level III	0	0	0	0	0	0	0	0	0	0	0	0
		Level IV	0	0	0	0	0	0	0	0	0	0	0	0
84	Gilgel Beles	Degree	0	0	0	0	0	0	0	0	0	0	0	0
		Level III	0	0	33	50	11	16	0	0	0	0	44	66
		Level IV	0	0	8	6	3	0	0	0	0	0	11	6
85	Gimbi	Degree	0	0	2	1	0	0	1	0	0	0	3	1
		Level III	0	0	0	0	0	0	0	0	0	0	0	0
		Level IV	0	0	0	0	0	0	0	0	0	0	0	0
86	Ginir	Degree	7	1	0	0	1	1	2	0	0	0	10	2
		Level III	0	0	0	0	0	0	0	0	0	0	0	0
		Level IV	0	0	0	0	0	0	0	0	0	0	0	0
87	Girawa	Degree	0	0	20	1	0	0	0	0	0	0	20	1
		Level III	0	0	0	0	0	0	0	0	0	0	0	0
		Level IV	0	0	0	0	0	0	0	0	0	0	0	0
88	Gode	Degree	5	0	8	0	36	0	11	2	0	0	60	2
		Level III	0	0	0	0	0	0	0	0	0	0	0	0
		Level IV	0	0	0	0	0	0	0	0	0	0	0	0
89	Gohatsion	Degree	0	0	2	1	3	3	0	1	0	0	5	5
		Level III	0	0	0	0	0	0	0	0	0	0	0	0
		Level IV	0	0	0	0	0	0	0	0	0	0	0	0
90	Gonder	Degree	36	6	50	21	42	14	17	2	0	0	145	43
		Level III	0	0	0	0	0	0	0	0	0	0	0	0
		Level IV	0	0	0	0	0	0	0	0	0	0	0	0
91	Goro	Degree	2	0	0	0	3	1	2	0	0	0	7	1
		Level III	0	0	0	0	0	0	0	0	0	0	0	0
		Level IV	0	0	0	0	0	0	0	0	0	0	0	0
92	Harar	Degree	6	0	15	2	9	1	0	1	0	0	30	4
		Level III	0	0	0	0	0	0	0	0	0	0	0	0
		Level IV	0	0	0	0	0	0	0	0	0	0	0	0
93	Haro Wacho	Degree	0	0	0	0	0	0	0	0	0	0	0	0
		Level III	0	0	0	0	0	0	0	0	0	0	0	0
		Level IV	0	0	0	0	0	0	0	0	0	0	0	0

NO	Center Name	Program	04B		04C		05A		05B		05C		Total	
			M	F	M	F	M	F	M	F	M	F	M	F
94	Homa	Degree	3	0	0	1	0	0	0	0	0	0	3	1
		Level III	0	0	0	0	0	0	0	0	0	0	0	0
		Level IV	0	0	0	0	0	0	0	0	0	0	0	0
95	Hossana	Degree	13	8	73	26	17	7	20	2	0	0	123	43
		Level III	0	0	0	0	0	0	0	0	0	0	0	0
		Level IV	0	0	0	0	0	0	0	0	0	0	0	0
96	Huruta	Degree	0	0	0	0	0	0	0	0	0	0	0	0
		Level III	0	0	0	0	0	0	0	0	0	0	0	0
		Level IV	0	0	0	0	0	0	0	0	0	0	0	0
97	Jawi	Degree	0	0	25	5	3	0	0	0	0	0	28	5
		Level III	0	0	0	0	0	0	0	0	0	0	0	0
		Level IV	0	0	0	0	0	0	0	0	0	0	0	0
98	Jeldu	Degree	1	0	6	1	3	1	0	0	0	0	10	2
		Level III	0	0	0	0	0	0	0	0	0	0	0	0
		Level IV	0	0	0	0	0	0	0	0	0	0	0	0
99	Jijiga	Degree	14	1	11	2	21	4	10	0	0	0	56	7
		Level III	0	0	0	0	0	0	0	0	0	0	0	0
		Level IV	0	0	0	0	0	0	0	0	0	0	0	0
100	Jimma	Degree	6	1	9	2	12	1	2	0	0	0	29	4
		Level III	0	0	0	0	0	0	0	0	0	0	0	0
		Level IV	0	0	0	0	0	0	0	0	0	0	0	0
101	Jinka	Degree	20	8	16	4	18	7	6	0	0	0	60	19
		Level III	0	0	0	0	0	0	0	0	0	0	0	0
		Level IV	0	0	0	0	0	0	0	0	0	0	0	0
102	Kachisi	Degree	0	0	13	1	1	1	0	0	0	0	14	2
		Level III	0	0	0	0	0	0	0	0	0	0	0	0
		Level IV	0	0	0	0	0	0	0	0	0	0	0	0
103	Kamashi	Degree	3	1	0	0	3	2	0	0	0	0	6	3
		Level III	1	1	0	0	0	0	0	0	0	0	1	1
		Level IV	0	0	0	0	0	0	0	0	0	0	0	0
104	Kelela	Degree	1	1	16	4	0	1	5	0	0	0	22	6
		Level III	0	0	0	0	0	0	0	0	0	0	0	0
		Level IV	0	0	0	0	0	0	0	0	0	0	0	0
105	Kemba	Degree	13	2	10	6	4	2	1	0	0	0	28	10
		Level III	0	0	0	0	0	0	0	0	0	0	0	0
		Level IV	0	0	0	0	0	0	0	0	0	0	0	0
106	Kobo	Degree	0	0	0	0	0	0	0	0	0	0	0	0
		Level III	0	0	0	0	0	0	0	0	0	0	0	0
		Level IV	0	0	0	0	0	0	0	0	0	0	0	0
107	Kokosa	Degree	0	0	0	0	0	0	0	0	0	0	0	

NO	Center Name	Program	04B		04C		05A		05B		05C		Total	
			M	F	M	F	M	F	M	F	M	F	M	F
		Level III	0	0	0	0	0	0	0	0	0	0	0	0
		Level IV	0	0	0	0	0	0	0	0	0	0	0	0
108	Kon	Degree	0	1	9	4	10	2	0	0	0	0	19	7
		Level III	0	0	0	0	0	0	0	0	0	0	0	0
		Level IV	0	0	0	0	0	0	0	0	0	0	0	0
109	Konso	Degree	0	0	0	0	0	0	0	0	0	0	0	0
		Level III	0	0	0	0	0	0	0	0	0	0	0	0
		Level IV	0	0	0	0	0	0	0	0	0	0	0	0
110	Lalibella	Degree	8	0	17	4	8	5	5	3	0	0	38	12
		Level III	0	0	0	0	0	0	0	0	0	0	0	0
		Level IV	0	0	0	0	0	0	0	0	0	0	0	0
111	Liben	Degree	5	1	5	6	10	4	4	1	0	0	24	12
		Level III	0	0	0	0	0	0	0	0	0	0	0	0
		Level IV	0	0	0	0	0	0	0	0	0	0	0	0
112	Limmu Genet	Degree	0	0	0	0	0	0	0	0	0	0	0	0
		Level III	0	0	0	0	0	0	0	0	0	0	0	0
		Level IV	0	0	0	0	0	0	0	0	0	0	0	0
113	Masha	Degree	9	1	7	0	4	0	4	1	0	0	24	2
		Level III	0	0	0	0	0	0	0	0	0	0	0	0
		Level IV	0	0	0	0	0	0	0	0	0	0	0	0
114	Maychew	Degree	14	2	10	2	4	2	1	0	0	0	29	6
		Level III	0	0	0	0	0	0	0	0	0	0	0	0
		Level IV	0	0	0	0	0	0	0	0	0	0	0	0
115	Mehal Meda	Degree	16	2	22	6	5	2	2	2	0	0	45	12
		Level III	0	0	0	0	0	0	0	0	0	0	0	0
		Level IV	0	0	0	0	0	0	0	0	0	0	0	0
116	Mekane Selam	Degree	14	0	14	2	7	1	2	2	0	0	37	5
		Level III	0	0	0	0	0	0	0	0	0	0	0	0
		Level IV	0	0	0	0	0	0	0	0	0	0	0	0
117	Mekdela	Degree	3	0	0	0	3	1	0	0	0	0	6	1
		Level III	0	0	0	0	0	0	0	0	0	0	0	0
		Level IV	0	0	0	0	0	0	0	0	0	0	0	0
118	Mekele	Degree	25	2	33	4	23	5	10	1	0	0	91	12
		Level III	0	0	0	0	0	0	0	0	0	0	0	0
		Level IV	0	0	0	0	0	0	0	0	0	0	0	0
119	Mendi	Degree	1	0	5	1	3	0	0	0	0	0	9	1
		Level III	0	0	0	0	0	0	0	0	0	0	0	0
		Level IV	0	0	0	0	0	0	0	0	0	0	0	0
120	Mertolemariam	Degree	14	3	23	7	16	3	9	3	0	0	62	16
		Level III	0	0	0	0	0	0	0	0	0	0	0	0

NO	Center Name	Program	04B		04C		05A		05B		05C		Total	
			M	F	M	F	M	F	M	F	M	F	M	F
		Level IV	0	0	0	0	0	0	0	0	0	0	0	0
121	Meta Robe	Degree	1	3	1	0	3	1	0	0	0	0	5	4
		Level III	0	0	0	0	0	0	0	0	0	0	0	0
		Level IV	0	0	0	0	0	0	0	0	0	0	0	0
122	Metehara	Degree	0	0	0	0	0	0	0	0	0	0	0	0
		Level III	0	0	0	0	0	0	0	0	0	0	0	0
		Level IV	0	0	0	0	0	0	0	0	0	0	0	0
123	Meti	Degree	0	0	4	0	8	0	0	0	0	0	12	0
		Level III	0	0	0	0	0	0	0	0	0	0	0	0
		Level IV	0	0	0	0	0	0	0	0	0	0	0	0
124	Metu	Degree	13	1	3	0	7	1	3	0	0	0	26	2
		Level III	0	0	0	0	0	0	0	0	0	0	0	0
		Level IV	0	0	0	0	0	0	0	0	0	0	0	0
125	Mizan Teferi	Degree	9	2	6	3	5	0	3	0	0	0	23	5
		Level III	0	0	0	0	0	0	0	0	0	0	0	0
		Level IV	0	0	0	0	0	0	0	0	0	0	0	0
126	Mota	Degree	27	9	45	11	37	14	26	6	1	0	136	40
		Level III	0	0	0	0	0	0	0	0	0	0	0	0
		Level IV	0	0	0	0	0	0	0	0	0	0	0	0
127	Moyale	Degree	7	3	10	2	6	1	7	1	0	0	30	7
		Level III	0	0	0	0	0	0	0	0	0	0	0	0
		Level IV	0	0	0	0	0	0	0	0	0	0	0	0
128	Mudula	Degree	2	0	7	1	1	0	3	1	0	0	13	2
		Level III	0	0	0	0	0	0	0	0	0	0	0	0
		Level IV	0	0	0	0	0	0	0	0	0	0	0	0
129	Muja(Simada)	Degree	1	0	0	0	0	0	0	0	0	0	1	0
		Level III	0	0	0	0	0	0	0	0	0	0	0	0
		Level IV	0	0	0	0	0	0	0	0	0	0	0	0
130	Muja(Woldiya)	Degree	7	0	0	1	0	3	0	0	0	0	7	4
		Level III	0	0	0	0	0	0	0	0	0	0	0	0
		Level IV	0	0	0	0	0	0	0	0	0	0	0	0
131	Nedjo	Degree	5	0	7	2	3	0	0	0	0	0	15	2
		Level III	0	0	0	0	0	0	0	0	0	0	0	0
		Level IV	0	0	0	0	0	0	0	0	0	0	0	0
132	Nefas Mewcha	Degree	10	1	26	4	2	0	2	1	0	0	40	6
		Level III	0	0	0	0	0	0	0	0	0	0	0	0
		Level IV	0	0	0	0	0	0	0	0	0	0	0	0
133	Negele Borena	Degree	7	2	62	22	71	13	18	2	0	0	158	39
		Level III	0	0	0	0	0	0	0	0	0	0	0	0
		Level IV	0	0	0	0	0	0	0	0	0	0	0	0

NO	Center Name	Program	04B		04C		05A		05B		05C		Total	
			M	F	M	F	M	F	M	F	M	F	M	F
134	Nekemt	Degree	6	1	9	0	3	0	3	0	0	0	21	1
		Level III	0	0	0	0	0	0	0	0	0	0	0	0
		Level IV	0	0	0	0	0	0	0	0	0	0	0	0
135	Rama	Degree	1	0	0	0	0	0	1	0	0	0	2	0
		Level III	0	0	0	0	0	0	0	0	0	0	0	0
		Level IV	0	0	0	0	0	0	0	0	0	0	0	0
136	Saja	Degree	0	0	1	0	2	0	0	0	0	0	3	0
		Level III	0	0	0	0	0	0	0	0	0	0	0	0
		Level IV	0	0	0	0	0	0	0	0	0	0	0	0
137	Sawlla	Degree	14	1	0	0	13	3	0	0	0	0	27	4
		Level III	0	0	0	0	0	0	0	0	0	0	0	0
		Level IV	0	0	0	0	0	0	0	0	0	0	0	0
138	Sayint	Degree	15	1	27	5	4	3	4	1	0	0	50	10
		Level III	0	0	0	0	0	0	0	0	0	0	0	0
		Level IV	0	0	0	0	0	0	0	0	0	0	0	0
139	Saylem	Degree	0	0	0	0	30	2	0	0	0	0	30	2
		Level III	0	0	0	0	0	0	0	0	0	0	0	0
		Level IV	0	0	0	0	0	0	0	0	0	0	0	0
140	Sekota	Degree	19	5	50	13	32	8	9	5	0	0	110	31
		Level III	0	0	0	0	0	0	0	0	0	0	0	0
		Level IV	0	0	0	0	0	0	0	0	0	0	0	0
141	Shakiso	Degree	0	0	0	0	0	0	0	0	0	0	0	0
		Level III	0	0	0	0	0	0	0	0	0	0	0	0
		Level IV	0	0	0	0	0	0	0	0	0	0	0	0
142	Shambu	Degree	1	1	1	0	6	1	2	0	0	0	10	2
		Level III	0	0	0	0	0	0	0	0	0	0	0	0
		Level IV	0	0	0	0	0	0	0	0	0	0	0	0
143	Shewarobit	Degree	4	0	0	0	2	1	0	0	0	0	6	1
		Level III	0	0	0	0	0	0	0	0	0	0	0	0
		Level IV	0	0	0	0	0	0	0	0	0	0	0	0
144	Shire	Degree	5	1	6	1	13	2	2	0	0	0	26	4
		Level III	0	0	0	0	0	0	0	0	0	0	0	0
		Level IV	0	0	0	0	0	0	0	0	0	0	0	0
145	Shirka	Degree	0	0	0	0	0	0	0	0	0	0	0	0
		Level III	0	0	0	0	0	0	0	0	0	0	0	0
		Level IV	0	0	0	0	0	0	0	0	0	0	0	0
146	Sigimo	Degree	0	0	0	0	0	0	0	0	0	0	0	0
		Level III	0	0	0	0	0	0	0	0	0	0	0	0
		Level IV	0	0	0	0	0	0	0	0	0	0	0	0
147	Simada	Degree	10	1	46	43	2	2	4	3	0	0	62	49

NO	Center Name	Program	04B		04C		05A		05B		05C		Total	
			M	F	M	F	M	F	M	F	M	F	M	F
		Level III	0	0	0	0	0	0	0	0	0	0	0	0
		Level IV	0	0	0	0	0	0	0	0	0	0	0	0
148	Tello	Degree	0	0	0	0	0	0	0	0	0	0	0	0
		Level III	0	0	0	0	0	0	0	0	0	0	0	0
149	Tepi	Level IV	0	0	0	0	0	0	0	0	0	0	0	0
		Degree	6	1	3	1	5	0	0	0	0	0	14	2
		Level III	0	0	0	0	0	0	0	0	0	0	0	0
150	Tercha	Level IV	0	0	0	0	0	0	0	0	0	0	0	0
		Degree	1	1	1	0	4	1	3	0	0	0	9	2
		Level III	0	0	0	0	0	0	0	0	0	0	0	0
151	Ticho	Level IV	0	0	0	0	0	0	0	0	0	0	0	0
		Degree	0	0	0	0	0	0	0	0	0	0	0	0
		Level III	0	0	0	0	0	0	0	0	0	0	0	0
152	Tilili	Level IV	0	0	0	0	0	0	0	0	0	0	0	0
		Degree	7	3	14	3	7	5	5	2	0	0	33	13
		Level III	0	0	0	0	0	0	0	0	0	0	0	0
153	Wadera	Level IV	0	0	0	0	0	0	0	0	0	0	0	0
		Degree	0	0	0	3	2	0	4	0	0	0	6	3
		Level III	0	0	0	0	0	0	0	0	0	0	0	0
154	Wogel Tena	Level IV	0	0	0	0	0	0	0	0	0	0	0	0
		Degree	5	0	5	1	2	0	3	1	0	0	15	2
		Level III	0	0	0	0	0	0	0	0	0	0	0	0
155	Wogidy	Level IV	0	0	0	0	0	0	0	0	0	0	0	0
		Degree	0	0	11	0	0	0	1	0	0	0	12	0
		Level III	0	0	0	0	0	0	0	0	0	0	0	0
156	Wolayita	Level IV	0	0	0	0	0	0	0	0	0	0	0	0
		Degree	29	4	40	6	25	7	10	3	0	0	104	20
		Level III	0	0	0	0	0	0	0	0	0	0	0	0
157	Woldiya	Level IV	0	0	0	0	0	0	0	0	0	0	0	0
		Degree	23	3	13	5	32	3	1	1	0	0	69	12
		Level III	0	0	0	0	0	0	0	0	0	0	0	0
158	Wolisso	Level IV	0	0	0	0	0	0	0	0	0	0	0	0
		Degree	13	0	12	0	8	4	0	0	0	0	33	4
		Level III	0	0	0	0	0	0	0	0	0	0	0	0
159	Wolkite	Level IV	0	0	0	0	0	0	0	0	0	0	0	0
		Degree	9	4	21	9	23	3	10	3	0	0	63	19
		Level III	0	0	0	0	0	0	0	0	0	0	0	0
160	Wonbera	Degree	0	0	1	0	0	0	0	0	0	0	1	0
		Level III	0	0	0	0	0	0	0	0	0	0	0	0

NO	Center Name	Program	04B		04C		05A		05B		05C		Total	
			M	F	M	F	M	F	M	F	M	F	M	F
		Level IV	0	0	0	0	0	0	0	0	0	0	0	0
161	Woreta	Degree	3	1	2	0	7	1	1	1	0	0	13	3
		Level III	0	0	0	0	0	0	0	0	0	0	0	0
		Level IV	0	0	0	0	0	0	0	0	0	0	0	0
162	Worka	Degree	3	0	6	0	3	0	0	0	0	0	12	0
		Level III	0	0	0	0	0	0	0	0	0	0	0	0
		Level IV	0	0	0	0	0	0	0	0	0	0	0	0
163	Wukro	Degree	4	3	8	3	2	1	1	0	0	0	15	7
		Level III	0	0	0	0	0	0	0	0	0	0	0	0
		Level IV	0	0	0	0	0	0	0	0	0	0	0	0
164	Yabello	Degree	10	0	10	6	5	4	6	3	0	0	31	13
		Level III	0	0	0	0	0	0	0	0	0	0	0	0
		Level IV	0	0	0	0	0	0	0	0	0	0	0	0
165	Yirgalem	Degree	1	0	3	0	4	1	1	1	0	0	9	2
		Level III	0	0	0	0	0	0	0	0	0	0	0	0
		Level IV	0	0	0	0	0	0	0	0	0	0	0	0
166	Zigula	Degree	2	0	5	4	4	1	11	3	0	0	22	8
		Level III	0	0	0	0	0	0	0	0	0	0	0	0
		Level IV	0	0	0	0	0	0	0	0	0	0	0	0
<b>Total</b>		Degree	1225	254	1782	490	1289	378	590	144	9	3	4895	1269
		Level III	11	16	40	58	13	20	0	0	0	0	64	94
		Level IV	13	2	11	6	3	1	0	0	0	0	27	9
<b>Total</b>			1249	272	1833	554	1305	399	590	144	9	3	4986	1372

## 2.2.9. Graduation

### 2.2.9.1. Number of Graduates by Department and sex (1999-2003)

Year of Graduation	Department	Program												Total		
		Degree			Diploma			10+2/Level III			10+1			M	F	T
		M	F	T	M	F	T	M	F	T	M	F	T			
1999	Accounting	38	6	44	298	97	395	49	65	114	21	8	29	406	176	582
	Amharic	19	1	20			0			0			0	19	1	20
	English	25		25			0			0			0	25	0	25
	Geography	11		11			0			0			0	11	0	11
	History	2		2			0			0			0	2	0	2
	Human Resource Management			0	248	92	340	61	37	98	36	24	60	345	153	498
	Language			0	1044	439	1483			0			0	1044	439	1483
	Law	46	7	53			0	15	2	17	30	16	46	91	25	116
	Management	84	9	93			0			0			0	84	9	93
	Marketing Management	3	2	5	81	16	97	7	8	15	6	3	9	97	29	126
	Mathematics	9	1	10	395	63	458			0			0	404	64	468
	Natural Science			0	480	100	580			0			0	480	100	580
	Purchasing & Supplies Management			0	27	20	47	25	7	32	7	3	10	59	30	89
	Social Science			0	645	122	767			0			0	645	122	767
		<b>Sub Total</b>	<b>237</b>	<b>26</b>	<b>263</b>	<b>3218</b>	<b>949</b>	<b>4167</b>	<b>157</b>	<b>119</b>	<b>276</b>	<b>100</b>	<b>54</b>	<b>154</b>	<b>3712</b>	<b>1148</b>
2000	Accounting	59	26	85	361	294	655	59	61	120	24	16	40	503	397	900
	Amharic	100	31	131	0	0	0			0			0	100	31	131
	English	141	19	160	0	0	0			0			0	141	19	160
	Geography	86	4	90	0	0	0			0			0	86	4	90
	History	35	3	38	0	0	0			0			0	35	3	38
	Human Resource Management			0	740	331	1071	72	58	130	42	18	60	854	407	1261
	Language			0	1070	516	1586			0			0	1070	516	1586
	Language Oromiffa			0	7	0	7			0			0	7	0	7
	Law	90	2	92	447	66	513	62	21	83	8	1	9	607	90	697
	Library Science			0	162	93	255			0			0	162	93	255
	Management	139	43	182	0	0	0			0			0	139	43	182
	Marketing Management	28		28	301	60	361	13	9	22	10	7	17	352	76	428
	Mathematics	20		20	337	45	382			0			0	357	45	402
	Mathematics Oromifa			0	4	0	4			0			0	4	0	4
	Natural Science			0	479	133	612			0			0	479	133	612
	Natural Science Oromifa			0	12	0	12			0			0	12	0	12
	Purchasing & Supplies Management			0	135	41	176	17	11	28	8	5	13	160	57	217
	Social Science			0	730	163	893			0			0	730	163	893
	Social Science Oromifa			0	15	0	15			0			0	15	0	15
	<b>Sub Total</b>	<b>698</b>	<b>128</b>	<b>826</b>	<b>4800</b>	<b>1742</b>	<b>6542</b>	<b>223</b>	<b>160</b>	<b>383</b>	<b>92</b>	<b>47</b>	<b>139</b>	<b>5813</b>	<b>2077</b>	<b>7890</b>
2001	Accounting	53	11	64	131	76	207	28	39	67	69	54	123	281	180	461
	Amharic	55	16	71			0			0			0	55	16	71



Year of Graduation	Department	Program											Total			
		Degree			Diploma			10+2/Level III			10+1			M	F	T
		M	F	T	M	F	T	M	F	T	M	F	T			
	Cooperative (minor Accounting)	51	3	54			0			0			0	51	3	54
	Cooperative (minor Business)	16	0	16			0			0			0	16	0	16
	EDPM (minor Business)	114	5	119			0			0			0	114	5	119
	EDPM (minor English)	134	25	159			0			0			0	134	25	159
	English	145	10	155			0			0			0	145	10	155
	Geography	63	0	63			0			0			0	63	0	63
	History	41	20	61			0			0			0	41	20	61
	Human Resource Management			0	547	181	728	87	65	152	211	79	290	845	325	1170
	Language			0	1575	1150	2725			0			0	1575	1150	2725
	Language Oromifa			0	36	22	58			0			0	36	22	58
	Law	56	9	65	446	67	513	7	14	21	44	5	49	553	95	648
	Library Science			0	59	60	119			0			0	59	60	119
	Management	126	14	140			0			0			0	126	14	140
	Marketing Management	31	5	36	46	25	71	9	4	13	22	11	33	108	45	153
	Mathematics	74	7	81	502	80	582			0			0	576	87	663
	Mathematics Oromifa			0	16	2	18			0			0	16	2	18
	Natural Science			0	592	141	733			0			0	592	141	733
	Natural Science Oromifa			0	23	1	24			0			0	23	1	24
	Purchasing & Supplies Management			0	72	16	88	5	11	16	17	9	26	94	36	130
	Rural Development	239	29	268			0			0			0	239	29	268
	Social Science			0	1442	605	2047			0			0	1442	605	2047
	Social Science Oromifa			0	54	15	69			0			0	54	15	69
	<b>Sub Total</b>	<b>1198</b>	<b>154</b>	<b>1352</b>	<b>5541</b>	<b>2441</b>	<b>7982</b>	<b>136</b>	<b>133</b>	<b>269</b>	<b>363</b>	<b>158</b>	<b>521</b>	<b>7238</b>	<b>2886</b>	<b>10124</b>
2002	Accounting	68	26	94	147	117	264	6	16	22				221	159	380
	Amharic	38	16	54										38	16	54
	Cooperative (minor Accounting)	24	4	28										24	4	28
	Cooperative (minor Business)	42	9	51										42	9	51
	EDPM (minor Business)	60	3	63										60	3	63
	EDPM (minor English)	140	8	148										140	8	148
	English	87	12	99										87	12	99
	Geography	83	10	93										83	10	93
	History	38	0	38										38	0	38
	Human Resource Management				342	162	504	18	16	34				360	178	538
	Language				737	975	1712							737	975	1712
	Language Oromifa				124	123	247							124	123	247
	Law	91	12	103	75	10	85	2	0	2				168	22	190
	Library Science				29	49	78							29	49	78
	Management	171	60	231										171	60	231
Marketing Management	29	11	40	45	10	55	0	1	1				74	22	96	

Year of Graduation	Department	Program											Total			
		Degree			Diploma			10+2/Level III			10+1			M	F	T
		M	F	T	M	F	T	M	F	T	M	F	T			
	Mathematics	37	5	42	178	34	212							215	39	254
	Mathematics Oromifa				33	7	40							33	7	40
	Natural Science				272	36	308							272	36	308
	Natural Science Oromifa				52	8	60							52	8	60
	Purchasing & Supplies Management				30	24	54	1	2	3				31	26	57
	Rural Development	255	40	295										255	40	295
	Social Science				867	425	1292							867	425	1292
	Social Science Oromifa				195	96	291							195	96	291
	<b>Sub Total</b>	<b>1163</b>	<b>216</b>	<b>1379</b>	<b>3126</b>	<b>2076</b>	<b>5202</b>	<b>27</b>	<b>35</b>	<b>62</b>	<b>0</b>	<b>0</b>	<b>0</b>	<b>4316</b>	<b>2327</b>	<b>6643</b>
2003	Accounting	54	26	80	119	63	182	6	14	20				179	103	282
	Amharic	14	6	20										14	6	20
	Cooperative (minor Accounting)	10	2	12										10	2	12
	Cooperative (minor Business)	24	4	28										24	4	28
	EDPM (minor Business)	30	3	33										30	3	33
	EDPM (minor English)	29	2	31										29	2	31
	English	17	0	17										17	0	17
	Geography	4	0	4										4	0	4
	History	1	0	1										1	0	1
	Human Resource Management			0	357	164	521	3	2	5				360	166	526
	Language			0	6	11	17							6	11	17
	Language Oromifa			0	2	0	2							2	0	2
	Law	73	11	84	43	11	54							116	22	138
	Library Science			0	24	24	48							24	24	48
	Management	180	64	244										180	64	244
	Marketing Management	25	8	33	10	6	16	0	1	1				35	15	50
	Mathematics	4	0	4	3	1	4							7	1	8
	Mathematics Oromifa			0	1	0	1							1	0	1
	Natural Science			0	5	1	6							5	1	6
	Natural Science Oromifa			0	1	0	1							1	0	1
Purchasing & Supplies Management			0	13	11	24							13	11	24	
Rural Development	76	5	81										76	5	81	
Social Science			0	14	5	19							14	5	19	
Social Science Oromifa			0	3	0	3							3	0	3	
	<b>Sub Total</b>	<b>541</b>	<b>131</b>	<b>672</b>	<b>601</b>	<b>297</b>	<b>898</b>	<b>9</b>	<b>17</b>	<b>26</b>	<b>0</b>	<b>0</b>	<b>0</b>	<b>1151</b>	<b>445</b>	<b>1596</b>
	<b>Grand Total</b>	<b>3837</b>	<b>655</b>	<b>4492</b>	<b>17286</b>	<b>7505</b>	<b>24791</b>	<b>552</b>	<b>464</b>	<b>1016</b>	<b>555</b>	<b>259</b>	<b>814</b>	<b>22230</b>	<b>8883</b>	<b>31113</b>

**NOTE:** The total number of graduates in 2002 may be slightly different to what was printed in the previous version of the BOSS; the reason for this is that the data was not complete at the time of the BOSS 2010 publication and the same will be true for this version on the number of Graduates of the year 2003.

**Number of Graduates by Department and sex (2004-2005)**

Program	Departement	degree		Level III		10+3		Level IV	
		M	F	M	F	M	F	M	F
		2004	Accounting	160	75	46	24	115	129
Amharic	5		3						
English	18		3						
Geography	17		2						
History	5		0						
Law	108		17			208	123	69	10
Management	398		109						
Mathematics	10		2			6	0		
Marketing Management	23		9			14	8		
Educational Planning And Management	103		9						
Cooperatives	61		11						
Rural Development	109		15						
Rural Development And Agricultural Extension	21		0						
Agricultural Economics	34		4						
Agribusiness Management	15		1						
Finance and Development Economics	13		4						
Language						8	14		
Natural Science						2	0		
Social Science						15	2		
Language Oromifa						3	2		
Natural Science Oromifa						1	0		
Social Science Oromifa						5	1		
Mathematics Oromifa						1	0		
Human Resource Management				120	50	7	10		
Library Science						139	26		
Purchasing & Supplies Management						20	13		
Linear Amharic									
Linear English									
Linear Geography									
Linear Biology									
Linear History									
Linear Mathematics									
Linear Physics									
Library Science			14	15					
Marketing Management							31	11	
Purchasing & Supplies Management							49	19	
	Sub total	1100	264	180	89	544	328	374	164

Program	Departement	degree		Level III		10+3		Level IV	
		M	F	M	F	M	F	M	F
		2005	Accounting	36	25	62	28		
Amharic	41		46						
English	75		16						
Geography	97		40						
History	9		4						
Law	35		4					41	8
Management	155		31						
Mathematics	38		3						
Marketing Management	5		4						
Educational Planning And Management	163		28						
Cooperatives	66		10						
Rural Development	72		15						
Rural Development And Agricultural Extension	72		5						
Agricultural Economics	102		11						
Agribusiness Management	31		6						
Finance and Development Economics	44		8						
Language									
Natural Science									
Social Science									
Mathematics									
Language Oromifa						5	2		
Natural Science Oromifa						1	0		
Social Science Oromifa						2	1		
Mathematics Oromifa									
Accounting									
Human Resource Management				49	19				
Library Science									
Linear Amharic						12	24		
Linear English						6	2		
Linear Geography						8	6		
Linear Biology						2	0		
Linear History						2	1		
Linear Mathematics						3	0		
Linear Physics						1	0		
Library Science				8	20				
Marketing Management								46	18
Purchasing & Supplies Management							81	30	
Sub total		1041	256	119	67	42	36	429	244
Grand Total		2141	520	299	156	586	364	803	408

### 2.2.9.2. Total Graduates of Distance Mode of Learning (1995-2005EC)

Program	M	F	T
Degree	6105	1181	7286
Diploma	24617	8532	33149
10+2 (Level III)	853	627	1480
10+1	676	335	1011
10+3	586	364	950
Level IV	803	408	1211
<b>Total</b>	<b>33640</b>	<b>11447</b>	<b>45087</b>

### 2.2.10. Free Scholarship Winning Students

#### 2.2.10.1. Scholarship Winning Students from outside SMU

Year	Scholarship Students by Sex			Level of Training				Total
	M	F	T	Certificate	Diploma	Degree	Master	
1997	15	8	23	4	17	2		23
1998	27	12	39	2	25	12		39
1999	18	3	21	1	15	5		21
2000	42	3	45		29	16		45
2001	20		20		8	12		20
2002	8	6	14	3	8	2	1	14
<b>Total</b>	<b>130</b>	<b>32</b>	<b>162</b>	<b>10</b>	<b>102</b>	<b>49</b>	<b>1</b>	<b>162</b>

#### 2.2.10.2. Scholarship Given to SMU workers

Year	Scholarship Students by Sex			Level of Training				Total
	M	F	T	Certificate	Diploma	Degree	Master	
1998	5	15	20	1	14	5		20
1999	5	7	12		3	9		12
2000	3	4	7		1	6		7
2001	13	10	23		17	6		23
2002	3	3	6	3	3			6
2004	9	2	11		7	4		11
<b>Total</b>	<b>38</b>	<b>41</b>	<b>79</b>	<b>4</b>	<b>45</b>	<b>30</b>	<b>0</b>	<b>79</b>

#### 2.2.10.3. Total Number of Scholarships Given

Year	M	F	T
1997	15	8	23
1998	32	27	59
1999	23	10	33
2000	45	7	52
2001	33	10	43
2002	11	9	20
2004	9	2	11
<b>Total</b>	<b>168</b>	<b>73</b>	<b>241</b>

## 2.3. School of Graduate Studies

### 2.3.1. Regular Program

#### 2.3.1.1 Enrollment of Graduate Program Students (Postgraduate – Masters)

Year of Entry	Department	Sex		
		Male	Female	Total
	General MBA	71	19	90
	MBA – HRM Concentration	17	5	22
	General MBA	92	21	113
	MBA – HRM Concentration	7	4	11
	Agricultural Economics	18	3	21
2005	General MBA	295	86	381
	MBA in HRM	28	11	39
	MBA in Accounting and Finance	44	2	46
	Masters in Agricultural Economics	41	8	49
	Masters in Rural Development	10	1	11
	Sub-Total	418	108	526
	<b>Total</b>	<b>623</b>	<b>160</b>	<b>783</b>

#### 2.3.1.2 Total number of Graduates (Postgraduate – Masters)

Year of Graduation	Program	Sex		
		M	F	T
2005	Master of Business Administration	40	14	54
	MBA in Human Resource Management	9	1	10

### 2.3.2. IGNOU

#### 2.3.2.1. Total Number of IGNOU Students by Entry & Program

Year of Entry		Programs									
		MBA	MPS	MSO	MPA	MEC	MCO M	MAR D	MLIS	MSW	MAD E
2006	M	36	7	38	40	54	20	36			
	F	2		5		4	4	7			
	T	38	7	43	40	58	24	43			
2007	M	43		149	73	96	49	131	7		
	F	4		27	10	13	10	14	1		
	T	47		176	83	109	59	145	8		
2008	M	79		121	57	102	45	112			
	F	10		21	10	10	4	7			
	T	89		142	67	112	49	119			
2009	M	107		173	113	168	90	123	9	84	
	F	23		52	19	32	33	14	2	53	

Year of Entry		Programs									
		MBA	MPS	MSO	MPA	MEC	MCO M	MAR D	MLIS	MSW	MAD E
2010	T	130		225	132	200	123	137	11	137	
	M	85		155	94	172	114	83		105	
	F	24		51	16	38	34	14		58	
	T	109		206	110	210	148	97		163	
2011	M	25		48	18	35	36	16		21	4
	F	8		18	6	8	21	1		18	0
	T	33		66	24	43	57	17		39	4
2012	M	39		48	29	69	31	42		50	1
	F	7		39	12	11	21	4		33	0
	T	46		87	41	80	52	46		83	1
2013	M	27	9	63	26	101	42	29		37	
	F	10	2	26	10	15	25	6		29	
	T	37	13	89	36	116	67	35		66	
Grand Total	M	441	16	795	450	797	427	572	16	297	5
	F	88	2	239	83	131	410	67	3	191	0
	T	529	18	1034	533	928	837	639	19	488	5

**NOTE:** All the Years of Admissions of IGNOU are in Gregorian calendar.

MBA – Master of Business Administration  
 MPA – Master of Arts in Public Administration  
 MCOM – Master of Commerce  
 MARD – Master of Arts in Rural Development  
 MSO – Master of Arts in Sociology

MPS – Master of Arts in Political Science  
 MEC – Master of Arts in Economics  
 MLIS – Master of Library and Information  
 MSW – Master of Arts in Social Works  
 MADE – Master of Arts in Distance Education

### 2.3.2.2. IGNOU Graduation

Year of Entry		Programs									
		MBA	MPS	MSO	MPA	MEC	MCOM	MARD	MLIS	MSW	MADE
2009	M	0	0	7	0	0	3	0			
	F	1	1	42	16	3	16	3			
	T	1	1	49	16	3	19	3			
2010	M	10		52	26	23	7	46	2		
	F	1		7	0	5	3	6	1		
	T	11		59	26	28	10	52	3		
2011	M	40		85	19	28	5	81		4	
	F	0		10	4	1	0	3		5	
	T	40		95	23	29	5	84		9	
2012	M	11		54	28	17	11	45			
	F	1		14	4	5	3	2			
	T	12		68	32	22	14	47			
2013	M	14		43	20	21	14	23		17	
	F	4		19	5	2	5	2		3	
	T	18		62	25	23	19	25		20	
Grand Total	M	75	0	241	93	89	40	195	2	21-	
	F	7	1	92	29	16	27	16	1	8	
	T	82	1	333	122	105	67	211	3	29	



## 2.4. Total (Summed Up Conventional & Distance Modes) Students' Statistic

### 2.4.1. Enrollment

#### 2.4.1.1 Total Enrollment

Year of Entry	Program																							
	Degree						Diploma						10+2/Level III						12+1* (10+1)/Certificate					
	Conventional			Distance			Conventional			Distance			Conventional			Distance			Conventional			Distance		
	M	F	T	M	F	T	M	F	T	M	F	T	M	F	T	M	F	T	M	F	T	M	F	T
1991							42	28	70											1				
1992							153	196	349	47	5	52								24	83	107		
1993							185	182	367	33	8	41								14	58	72		
1994							451	510	961	2611	266	2877								32	128	160		
1995	24		24	319	26	345	1267	1365	2632	6594	1041	7635								60	307	367		
1996	250	187	437	413	47	460	946	948	1894	5548	1363	6911	52	245	297	69	49	118	94	261	355	232	82	314
1997	708	734	1442	999	188	1187	973	795	1768	6462	2297	8759	118	263	381	300	265	565	88	240	328	283	176	459
1998	543	592	1135	2916	378	3294	614	566	1180	8345	3782	12127	55	170	225	192	130	322	61	193	254	143	72	215
1999	679	870	1549	4991	773	5764	641	615	1256	6314	3451	9765	56	201	257	340	277	617	78	243	321	207	97	304
2000	402	439	841	3236	796	4032	495	785	1280	2689	1015	3704	53	166	219	546	374	920	60	165	225	346	132	478
2001	413	467	880	2884	624	3508	430	336	766	2479	1015	3494	29	64	93	1118	701	1819	33	61	94	5	3	8
2002	559	639	1198	8508	2149	10657	511	631	1142	4289	2210	6499				1184	670	1854				915	381	1296
2003	514	648	1162				141	439	580				185	182	367									
2004	520	616	1136	2801	624	3425	270	396	666				99	340	439	12	7	19						
2005	631	854	1485	1888	525	2413	49	149	198	3	1	4	48	393	441	13	20	33	21	45	66			
<b>Total</b>	<b>5243</b>	<b>6046</b>	<b>11289</b>	<b>28955</b>	<b>6130</b>	<b>35085</b>	<b>7168</b>	<b>7941</b>	<b>15109</b>	<b>45414</b>	<b>16454</b>	<b>61868</b>	<b>695</b>	<b>2024</b>	<b>2719</b>	<b>3774</b>	<b>2493</b>	<b>6267</b>	<b>566</b>	<b>1784</b>	<b>2349</b>	<b>2131</b>	<b>943</b>	<b>3074</b>

#### 2.4.1.2. Total Enrollment by Year and Program Level

Year of Entry	Degree			Diploma (12+2/10+3)			10+2/Level III			12+1* / 10+1			Grand Total		
	M	F	Total	M	F	Total	M	F	Total	M	F	Total	M	F	T
1991				42	28	70				1	0	1	43	28	71
1992				200	201	401				24	83	107	224	284	508
1993				218	190	408				14	58	72	232	248	480
1994				3062	776	3838				32	128	160	3094	904	3998
1995	343	26	369	7861	2406	10267				60	307	367	8264	2739	11003
1996	663	234	897	6494	2311	8805	121	294	415	326	343	669	7604	3182	10786
1997	1707	922	2629	7435	3092	10527	418	528	946	371	416	787	9931	4958	14889
1998	3459	970	4429	8959	4348	13307	247	300	547	204	265	469	12869	5883	18752
1999	5670	1643	7313	6955	4066	11021	396	478	874	285	340	625	13306	6527	19833
2000	3638	1235	4873	3184	1800	4984	599	540	1139	406	297	703	7827	3872	11699
2001	3297	1091	4388	2909	1351	4260	1147	765	1912	38	64	102	7391	3271	10662
2002	9067	2788	11855	4800	2841	7641	1184	670	1854	915	381	1296	15966	6680	22646
2003	514	648	1162	141	439	580	185	182	367				840	1269	2109

Year of Entry	Degree			Diploma (12+2/10+3)			10+2/Level III			12+1* /1 0+1			Grand Total		
	M	F	Total	M	F	Total	M	F	Total	M	F	Total	M	F	T
2004	3321	1240	4561	270	396	666	111	347	458				3702	1983	5685
2005	2519	1379	3898	52	150	202	61	413	474	21	45	66	2653	1987	4640
<b>Total</b>	<b>34198</b>	<b>12176</b>	<b>46374</b>	<b>52582</b>	<b>24395</b>	<b>76977</b>	<b>4469</b>	<b>4517</b>	<b>8986</b>	<b>2697</b>	<b>2727</b>	<b>5424</b>	<b>93946</b>	<b>43815</b>	<b>137761</b>

### 2.4.1.3. Total Enrollments by Year and Mode of Learning

Year of Entry	Total								
	Conventional			Distance			Grand Total		
	M	F	T	M	F	T	Male	Female	Total
1991	43	28	71	0	0	0	43	28	71
1992	177	279	456	47	5	52	224	284	508
1993	199	240	439	33	8	41	232	248	480
1994	483	638	1121	2611	266	2877	3094	904	3998
1995	1351	1672	3023	6913	1067	7980	8264	2739	11003
1996	1342	1641	2983	6262	1541	7803	7604	3182	10786
1997	1887	2032	3919	8044	2926	10970	9931	4958	14889
1998	1273	1521	2794	11596	4362	15958	12869	5883	18752
1999	1454	1929	3383	11852	4598	16450	13306	6527	19833
2000	1010	1555	2565	6817	2317	9134	7827	3872	11699
2001	905	928	1833	6486	2343	8829	7391	3271	10662
2002	1070	1270	2340	14896	5410	20306	15966	6680	22646
2003	840	1269	2109			0	840	1269	2109
2004	889	1352	2241	2813	631	3444	3702	1983	5685
2005	749	1441	2190	1904	546	2450	2653	1987	4640
<b>Total</b>	<b>13672</b>	<b>17795</b>	<b>31467</b>	<b>80274</b>	<b>26020</b>	<b>106294</b>	<b>93946</b>	<b>43815</b>	<b>137761</b>

### 2.4.2. Total Number of Graduated Students (Up to 2005 EC)

Program	Mode of Learning						Grand Total		
	Conventional			Distance			M	F	T
	M	F	T	M	F	T			
Degree	1766	2093	3859	5961	1175	7136	7727	3268	10995
Diploma	3848	5164	9012	18089	7913	26002	21973	13077	35050
Certificate	780	1540	2320	1992	1243	3235	2772	2783	5555
Masters	49	15	64	756	197	953	805	212	1017
<b>Total</b>	<b>6443</b>	<b>8812</b>	<b>15255</b>	<b>26798</b>	<b>10528</b>	<b>37326</b>	<b>33277</b>	<b>19340</b>	<b>52617</b>

### 2.4.3. Total Number of Current Students

Year of Entry	Distance			Conventional			Total		
	M	F	T	M	F	T	M	F	T
1999			0	15	4	19	15	4	19
2000			0	30	15	45	30	15	45
2001	2467	810	3277	273	281	554	2740	1091	3831
2002	14895	5410	20305	569	771	1340	15464	6181	21645
2003			0	739	1263	2002	739	1263	2002
2004	2861	642	3503	889	1352	2241	3750	1994	5744
2005	5026	1442	6468	1034	1423	2457	6060	2865	8925
<b>Total</b>	<b>25249</b>	<b>8304</b>	<b>33553</b>	<b>3549</b>	<b>5109</b>	<b>8658</b>	<b>28798</b>	<b>13413</b>	<b>42211</b>

#### 2.4.4. Total Number of Scholarship Students

Year	Master's			Conventional			Distance			Total		
	M	F	T	M	F	T	M	F	T	M	F	T
1997				21	23	44	15	8	23	36	31	67
1998				24	15	39	32	27	59	56	42	98
1999				24	14	38	23	10	33	47	24	71
2000				19	12	31	45	7	52	64	19	83
2001				27	13	40	33	10	43	60	23	83
2002				29	12	41	11	9	20	40	21	61
2003				5	13	18				5	13	18
2004	2	1	3	8	12	20	9	2	11	19	15	34
2005										11	8	19
<b>Total</b>	<b>2</b>	<b>1</b>	<b>3</b>	<b>157</b>	<b>114</b>	<b>271</b>	<b>168</b>	<b>73</b>	<b>241</b>	<b>338</b>	<b>196</b>	<b>534</b>